

# **INITIAL RECEIPT**

**United States Department of the Interior**  
**Bureau of Land Management**  
 DIV OF LANDS, MINRLS & ENERGY  
 ONE N CENTRAL AVE  
 PHOENIX, AZ 85004 -4427  
 Phone: 602-417-9200

Receipt	
No:	4850013

Transaction #: 4978367	
Date of Transaction: 12/10/2020	
CUSTOMER:	
ARIZONA MINERALS INC 2210 E FORT LOWELL RD TUCSON, AZ 85719-2468 US	

LINE #	QTY	DESCRIPTION	REMARKS	UNIT PRICE	TOTAL
1	34.00	LOCATABLE MINERALS / MINING CLAIMS- NEW, UNADJUD, ONE OR MORE AUTH NOS / NEW MINING CLAIM PROCESSING FEE <b>CASES:</b> AMC462180/\$20.00, AMC462181/\$20.00, AMC462182/\$20.00, AMC462183/\$20.00, AMC462184/\$20.00, AMC462185/\$20.00, AMC462186/\$20.00, AMC462187/\$20.00, AMC462188/\$20.00, AMC462189/\$20.00, AMC462190/\$20.00, AMC462191/\$20.00, AMC462192/\$20.00, AMC462193/\$20.00, AMC462194/\$20.00, AMC462195/\$20.00, AMC462196/\$20.00, AMC462197/\$20.00, AMC462198/\$20.00, AMC462199/\$20.00, AMC462200/\$20.00, AMC462201/\$20.00, AMC462202/\$20.00, AMC462203/\$20.00, AMC462204/\$20.00, AMC462205/\$20.00, AMC462206/\$20.00, AMC462207/\$20.00, AMC462208/\$20.00, AMC462209/\$20.00, AMC462210/\$20.00, AMC462211/\$20.00, AMC462212/\$20.00, AMC462213/\$20.00		- n/a -	680.00
2	34.00	LOCATABLE MINERALS / MINING CLAIMS- NEW, UNADJUD, ONE OR MORE AUTH NOS / NEW MINING CLAIMS LOCATION FEE <b>CASES:</b> AMC462180/\$40.00, AMC462181/\$40.00, AMC462182/\$40.00, AMC462183/\$40.00, AMC462184/\$40.00, AMC462185/\$40.00, AMC462186/\$40.00, AMC462187/\$40.00, AMC462188/\$40.00, AMC462189/\$40.00, AMC462190/\$40.00, AMC462191/\$40.00,		- n/a -	1360.00

**ENTERED**  
 DEC 18 2020  
 BY: *TWU*

		AMC462192/\$40.00, AMC462193/\$40.00, AMC462194/\$40.00, AMC462195/\$40.00, AMC462196/\$40.00, AMC462197/\$40.00, AMC462198/\$40.00, AMC462199/\$40.00, AMC462200/\$40.00, AMC462201/\$40.00, AMC462202/\$40.00, AMC462203/\$40.00, AMC462204/\$40.00, AMC462205/\$40.00, AMC462206/\$40.00, AMC462207/\$40.00, AMC462208/\$40.00, AMC462209/\$40.00, AMC462210/\$40.00, AMC462211/\$40.00, AMC462212/\$40.00, AMC462213/\$40.00			
3	34.00	LOCATABLE MINERALS / MINING CLAIMS- NEW, UNADJUD, ONE OR MORE AUTH NOS / NEW MINING CLAIMS MAINTENANCE FEE CASES: AMC462180/\$165.00, AMC462181/\$165.00, AMC462182/\$165.00, AMC462183/\$165.00, AMC462184/\$165.00, AMC462185/\$165.00, AMC462186/\$165.00, AMC462187/\$165.00, AMC462188/\$165.00, AMC462189/\$165.00, AMC462190/\$165.00, AMC462191/\$165.00, AMC462192/\$165.00, AMC462193/\$165.00, AMC462194/\$165.00, AMC462195/\$165.00, AMC462196/\$165.00, AMC462197/\$165.00, AMC462198/\$165.00, AMC462199/\$165.00, AMC462200/\$165.00, AMC462201/\$165.00, AMC462202/\$165.00, AMC462203/\$165.00, AMC462204/\$165.00, AMC462205/\$165.00, AMC462206/\$165.00, AMC462207/\$165.00, AMC462208/\$165.00, AMC462209/\$165.00, AMC462210/\$165.00, AMC462211/\$165.00, AMC462212/\$165.00, AMC462213/\$165.00		- n/a -	5610.00
<b>TOTAL:</b>					<b>\$7,650.00</b>

PAYMENT INFORMATION			
1	AMOUNT:	7650.00	POSTMARKED: N/A
	TYPE:	CHECK	RECEIVED: 12/10/2020
	CHECK NO:	850391	
	NAME:	QUARLES AND BRADY LLP 411 E WISCONSIN AVE STE 2400 MILWAUKEE WI 53202 US	

REMARKS

This receipt was generated by the automated BLM Collections and Billing System and is a paper representation of a portion of the official electronic record contained therein.

# **CORRESPONDENCE**

# **TRANSFERS**

**MAINTENANCE FEES**  
**WAIVERS**  
**POL/NOI**

# **MISCELLANEOUS**



One South Church Avenue  
Suite 1800  
Tucson, Arizona 85701-1621  
520.770.8700  
Fax 520.623.2418  
www.quarles.com

Attorneys at Law in  
Chicago  
Indianapolis  
Madison  
Milwaukee  
Minneapolis  
Naples  
Phoenix  
Tampa  
Tucson  
Washington, D.C.

Writer's Direct Dial: 520.770.8708  
E-Mail: tiffany.morris@quarles.com

December 8, 2020

**Via UPS Overnight Delivery**

Bureau of Land Management  
Arizona State Office  
Attn: Information Access Center  
One North Central Avenue, Suite 800  
Phoenix, Arizona 85004-4427

*Re: Resubmission of Location Notices for Lode Mining Claims for Filing (SHELL-995 through SHELL-1028)*

Dear Sir or Madam:

On behalf of Arizona Minerals Inc., dba South32, enclosed for filing with the Bureau of Land Management are thirty-four (34) Location Notices for Lode Mining Claims. A check in the amount of \$7,650.00 is also enclosed to cover the BLM fees associated with these new mining claims.

Once the Location Notices are stamped and copied by your office, please return the originals to my attention at the address above. A postage paid envelope is also enclosed for your convenience. If you have any questions or concerns, please do not hesitate to contact me.

Sincerely,

Tiffany N. Morris  
Legal Specialist

Enclosures

c: Y. Marshall  
Arizona Minerals Inc.  
(via email)

RECEIVED  
BLM AZ STATE OFFICE  
2020 DEC 10 A 8:17  
PHOENIX, ARIZONA



**LOCATION NOTICES  
AMENDMENTS  
STATUS SHEET  
GEO REPORT/MTP**

**MINING CLAIM STATUS REPORT - Assessment Year 2020**

Data Entered: 12/18/2020 WV

MTP Checked By: WV  
GEO Checked By: WV

LEAD SERIAL NUMBER: AMC 462180 thru AMC 462213

NUMBER OF CLAIMS & TYPE:  
34 LODE  
\_\_\_\_ PLACER  
\_\_\_\_ ASSOCIATION PLACER  
\_\_\_\_ MILL SITE  
\_\_\_\_ TUNNEL SITE

CHARGES:  
Processing Fee @ \$20 = \$ 680  
Location Fee @ \$40 = \$ 1,360  
Maintenance Fee @ \$165 = \$ 5,610  
Add'l Maint Fee for Assoc Placer = \$ \_\_\_\_\_  
SUBTOTAL \$ \_\_\_\_\_  
Other Fees \$ \_\_\_\_\_  
Other Fees \$ \_\_\_\_\_  
TOTAL \$ 7,650

TOTAL ACREAGE: \_\_\_\_\_ Per Claim  
(Placer Only)

NUMBER OF LOCATORS: \_\_\_\_\_

DOCUMENTS RECEIVED VIA: Over-the-Counter [ ] Mail [  ] TIMELY FILED: Yes [  ] No [ ]

LEGAL DESCRIPTION: T 23S R 16E SEC 12-14  
T 23S R 17E SEC 8  
T \_\_\_\_\_ R \_\_\_\_\_ SEC \_\_\_\_\_  
T \_\_\_\_\_ R \_\_\_\_\_ SEC \_\_\_\_\_  
T \_\_\_\_\_ R \_\_\_\_\_ SEC \_\_\_\_\_

BLM [ ] FOREST SERVICE [ ] \_\_\_\_\_ SUBJ TO PL 359: Yes [ ] No [ ]  
WILDERNESS AREA [ ] \_\_\_\_\_

SPLIT ESTATE: N/A [ ] SX [ ] PX [ ] OTHER [ ] \_\_\_\_\_  
SRHA [ ] Was proper Notice filed if located on SHRA Land? Yes [ ] No [ ]

RECONVEYED MINERALS ON BLM LAND REQUIRE OPENING ORDER FROM 1944 TO 1993:  
Open to Entry On \_\_\_\_\_ N/A [ ]

COMMENTS/STATUS: VOID [ ] PARTIALLY VOID [ ] PVT MINERALS [ ] WITHDRAWN LANDS [ ]  
OTHER [ ] \_\_\_\_\_

[ ] Claimant acknowledges that portions of the following claim(s) site(s) may be void or voidable.

Printed Name of Claimant \_\_\_\_\_ Signature of Claimant \_\_\_\_\_

\*\*\*\*\*FINAL ADJUDICATION\*\*\*\*\*

DATE \_\_\_\_\_ INITIALS \_\_\_\_\_

AMC 462180

When Filed Return To:

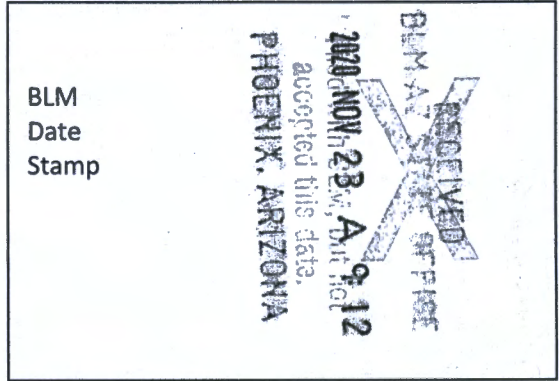


SOUTH32 HERMOSA  
2210 East Fort Lowell Road  
TUCSON, AZ 85719

**LOCATION NOTICE FOR LODE MINING CLAIM**

NOTICE IS HEREBY GIVEN that the SHELL-995 lode mining claim has been located

By: ARIZONA MINERALS, INC.  
2210 East Fort Lowell Road  
TUCSON, AZ 85719



The general course of this claim is EAST TO WEST and it is situated in the Harshaw and Patagonia Mining Districts, SANTA CRUZ County, Arizona. This claim is 1500 feet long and 600 feet wide constituting 300 feet on each side of the centerline.

This claim runs from the location monument on the centerline on which this location notice is posted approximately 40 feet in a(n) WESTERLY direction to the WEST end line and 1460 feet in a(n) EASTERLY direction to the EAST end line.

This claim is marked by six monuments, one at each corner and one at the center of each end line of the claim.

The location monument on which this notice is posted is situated within Unsurveyed Section 14, Township 23 SOUTH, Range 16 EAST, from the Gila and Salt River Meridian, and this claim encompasses portions of the following quarter section (s), section (s), Township (s) and Range (s) NW 1/4 OF UNSURVEYED SECTION 14, T. 23S, R. 16E, from the Gila and Salt River Meridian, Arizona.

The locality of this claim with reference to some natural object or permanent monument and additional information (if any) concerning its locality are as follows: THE NORTHEAST CORNER OF THE CLAIM IS LOCATED S33°02'W, 10,827.9 FEET FROM THE SOUTHWEST CORNER OF SECTION 6, T. 23S, R. 17E, FROM THE GILA AND SALT RIVER MERIDIAN, SANTA CRUZ COUNTY, AZ.

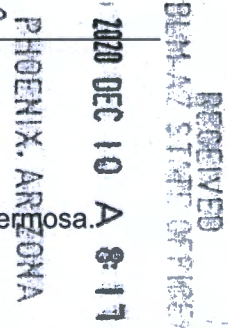
DATED AND POSTED on the ground this 7 day of Nov, 2020.

Arizona Minerals Inc.

WITNESS: Phil Wiley

BY: RM & Stoll

Ronald E. Stoll  
of JLF2 Consulting, LLC  
1213 N. Torino Avenue  
Tucson, AZ 85712  
AS AGENT FOR South32 Hermosa.



AMC462180

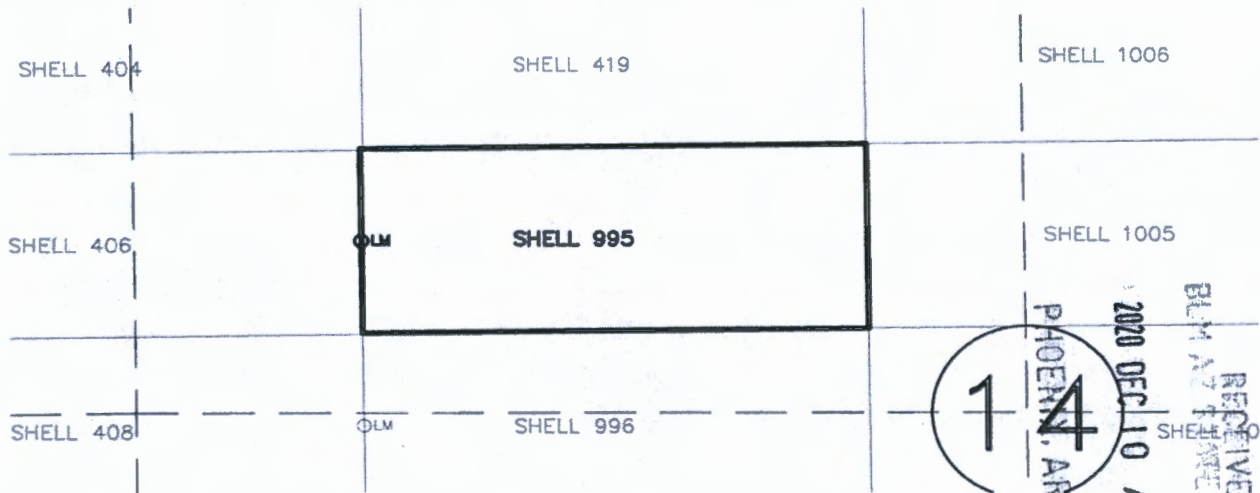
When Filed Return To:

SOUTH32 HERMOSA  
 2210 East Fort Lowell Road  
 TUCSON, AZ 85719

MINING CLAIM MAP

1" = 600'

LODE (X) PLACER ( )



AMC462180

1. The above map depicts the SHELL-995 mining claim, which is located in Unsurveyed Section (s) 14 Township 23S, Range 16E, Gila and Salt River Meridian, SANTA CRUZ County, Arizona.
2. The types of corner and end center monuments and location monument used are as follows: 2"X2"X5' WOOD POSTS WITH MARKED ALUMINUM TAGS, IN ROCK CAIRNS. All location monuments (LM) are offset 40 feet from the noted end center monument along the center line of the claim unless otherwise noted. The location monument has been placed outside patented ground.
3. The bearings in degrees between claim corners are: East/West lines run N 89°23' E and North/South lines run N 00°37' W, as depicted on the map or as stated on page 1 of this notice, and are surface distances. All ties to Claim monuments are in grid bearing and distance to reference monument.
4. All claims in this block are contiguous.

RECEIVED  
 BLM AZ FIELD OFFICE  
 2020 NOV 23 A 9:12  
 Filed with BLM, but not  
 accepted this date  
 PHOENIX, ARIZONA

When Filed Return To:

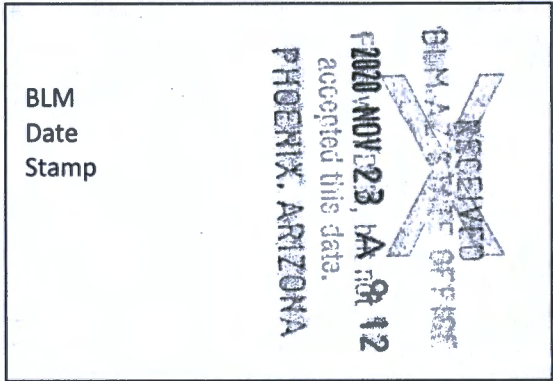


SOUTH32 HERMOSA  
2210 East Fort Lowell Road  
TUCSON, AZ 85719

**LOCATION NOTICE FOR LODE MINING CLAIM**

NOTICE IS HEREBY GIVEN that the SHELL-996 lode mining claim has been located

By: ARIZONA MINERALS, INC.  
2210 East Fort Lowell Road  
TUCSON, AZ 85719



The general course of this claim is EAST TO WEST and it is situated in the Harshaw and Patagonia Mining Districts, SANTA CRUZ County, Arizona. This claim is 1500 feet long and 600 feet wide constituting 300 feet on each side of the centerline.

This claim runs from the location monument on the centerline on which this location notice is posted approximately 40 feet in a(n) WESTERLY direction to the WEST end line and 1460 feet in a(n) EASTERLY direction to the EAST end line. This claim is marked by six monuments, one at each corner and one at the center of each end line of the claim.

The location monument on which this notice is posted is situated within Unsurveyed Section 14, Township 23 SOUTH, Range 16 EAST, from the Gila and Salt River Meridian, and this claim encompasses portions of the following quarter section (s), section (s), Township (s) and Range (s) NW, SW 1/4's OF UNSURVEYED SECTION 14, T. 23S, R. 16E, from the Gila and Salt River Meridian, Arizona.

The locality of this claim with reference to some natural object or permanent monument and additional information (if any) concerning its locality are as follows: THE NORTHEAST CORNER OF THE CLAIM IS LOCATED S31°21'W, 11,332.2 FEET FROM THE SOUTHWEST CORNER OF SECTION 6, T. 23S, R. 17E, FROM THE GILA AND SALT RIVER - MERIDIAN, SANTA CRUZ COUNTY, AZ.

DATED AND POSTED on the ground this 7 day of NOV, 2020.

WITNESS: [Signature]

Arizona Minerals Inc.  
BY: [Signature]

Ronald E. Stoll  
of JLF2 Consulting, LLC  
1213 N. Torino Avenue  
Tucson, AZ 85712  
AS AGENT FOR South32 Hermosa

RECEIVED BLM AZ STATE OFFICE PHOENIX, ARIZONA 2020 DEC 10 A 8:18

AMC 46218

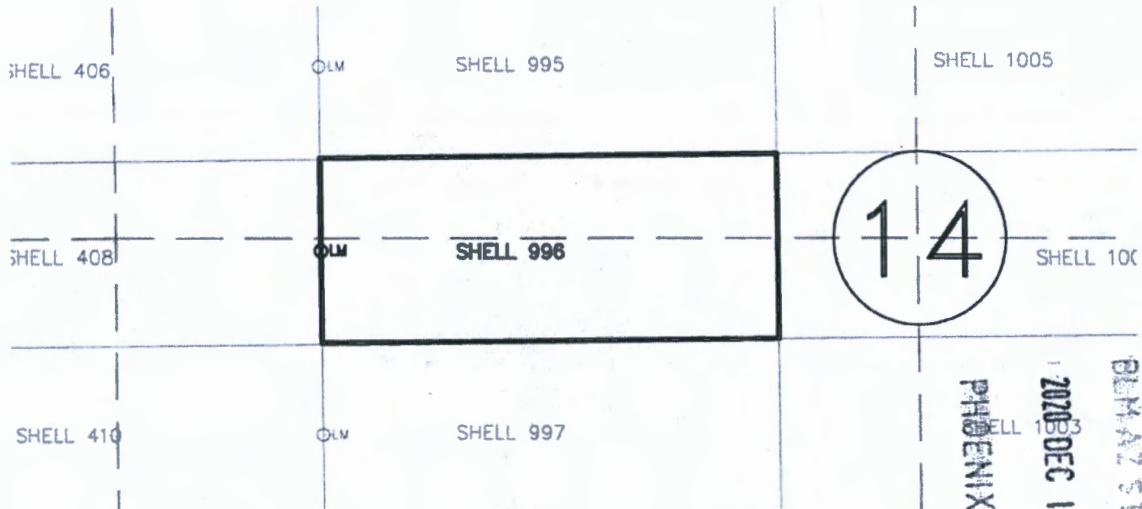
When Filed Return To:

SOUTH32 HERMOSA  
2210 East Fort Lowell Road  
TUCSON, AZ 85719

MINING CLAIM MAP

1" = 600'

LODE (X) PLACER ( )



ANCL462181

1. The above map depicts the SHELL-996 mining claim, which is located in Unsurveyed Section 14 Township 23S, Range 16E, Gila and Salt River Meridian, SANTA CRUZ County, Arizona.
2. The types of corner and end center monuments and location monument used are as follows: 2"X2"X5' WOOD POSTS WITH MARKED ALUMINUM TAGS, IN ROCK CAIRNS. All location monuments (LM) are offset 40 feet from the noted end center monument along the center line of the claim unless otherwise noted. The location monument has been placed outside patented ground.
3. The bearings in degrees between claim corners are: East/West lines run N 89°23' E and North/South lines run N 00°37' W, as depicted on the map or as stated on page 1 of this notice, and are surface distances. All ties to Claim monuments are in grid bearing and distance to reference monument.
4. All claims in this block are contiguous.

RECEIVED  
BLM AZ STATE OFFICE  
2020 NOV 23 A 9:12  
Filed with BLM, but not  
accepted this date.  
PHOENIX, ARIZONA



2020-07-23

Page 1 of 2

Requested By: Arizona Minerals

SUZANNE SAINZ, RECORDER

SANTA CRUZ COUNTY, ARIZONA

11-17-2020 09:00 AM Recording Fee \$30.00

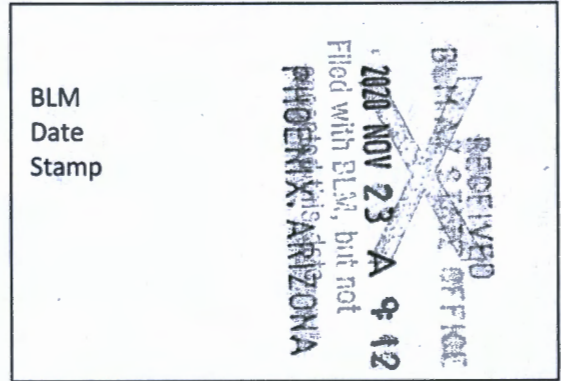
When Filed Return To:

SOUTH32 HERMOSA  
2210 East Fort Lowell Road  
TUCSON, AZ 85719

**LOCATION NOTICE FOR LODE MINING CLAIM**

NOTICE IS HEREBY GIVEN that the SHELL-997 lode mining claim has been located

By: ARIZONA MINERALS, INC.  
2210 East Fort Lowell Road  
TUCSON, AZ 85719



The general course of this claim is EAST TO WEST and it is situated in the Harshaw and Patagonia Mining Districts, SANTA CRUZ County, Arizona. This claim is 1500 feet long and 600 feet wide constituting 300 feet on each side of the centerline.

This claim runs from the location monument on the centerline on which this location notice is posted approximately 40 feet in a(n) WESTERLY direction to the WEST end line and 1460 feet in a(n) EASTERLY direction to the EAST end line. This claim is marked by six monuments, one at each corner and one at the center of each end line of the claim.

The location monument on which this notice is posted is situated within Unsurveyed Section 14, Township 23 SOUTH, Range 16 EAST, from the Gila and Salt River Meridian, and this claim encompasses portions of the following quarter section (s), section (s), Township (s) and Range (s) SW 1/4 OF UNSURVEYED SECTION 14, T. 23S, R. 16E, from the Gila and Salt River Meridian, Arizona.

The locality of this claim with reference to some natural object or permanent monument and additional information (if any) concerning its locality are as follows: THE NORTHEAST CORNER OF THE CLAIM IS LOCATED S29°49'W, 11,845.5 FEET FROM THE SOUTHWEST CORNER OF SECTION 6, T. 23S, R. 17E, FROM THE GILA AND SALT RIVER MERIDIAN, SANTA CRUZ COUNTY, AZ.

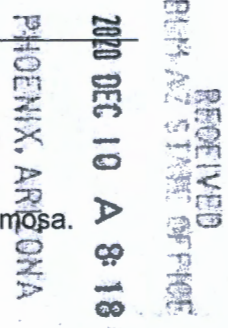
DATED AND POSTED on the ground this 7 day of NOV, 2020.

Arizona Minerals Inc.

WITNESS: [Signature]

BY: [Signature]

Ronald E. Stoll  
of JLF2 Consulting, LLC  
1213 N. Torino Avenue  
Tucson, AZ 85712  
AS AGENT FOR South32 Hermosa.



AMC 462182

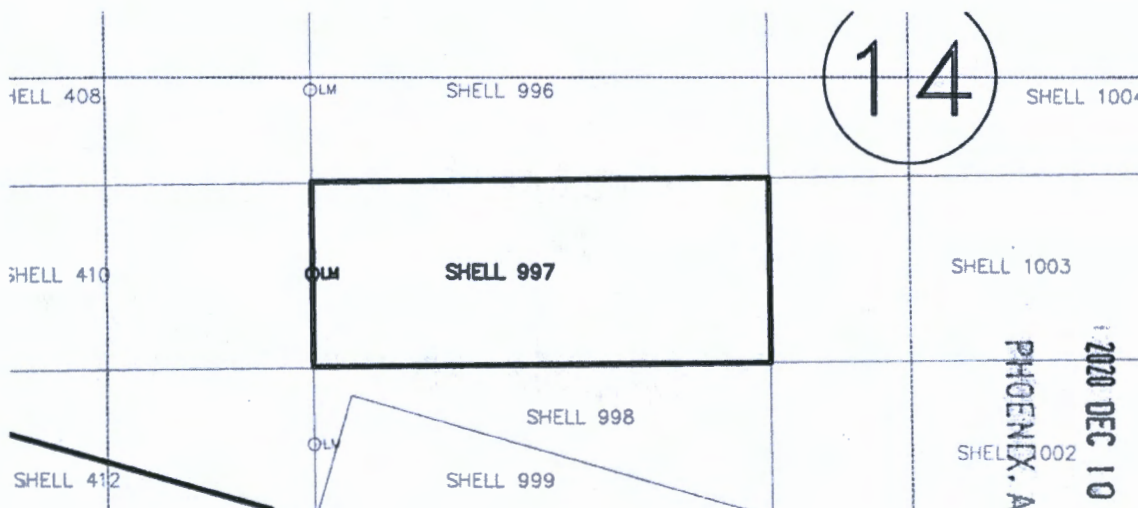
When Filed Return To:

SOUTH32 HERMOSA  
 2210 East Fort Lowell Road  
 TUCSON, AZ 85719

**MINING CLAIM MAP**

1" = 600'

LODE (X) PLACER ( )



AMC462182

RECEIVED  
 BLM AZ STATE OFFICE  
 2020 DEC 10 A 8:18  
 PHOENIX, ARIZONA

1. The above map depicts the SHELL-997 mining claim, which is located in Unsurveyed Section (s) 14 Township 23S, Range 16E, Gila and Salt River Meridian, SANTA CRUZ County, Arizona.
2. The types of corner and end center monuments and location monument used are as follows: 2"X2"X5' WOOD POSTS WITH MARKED ALUMINUM TAGS, IN ROCK CAIRNS. All location monuments (LM) are offset 40 feet from the noted end center monument along the center line of the claim unless otherwise noted. The location monument has been placed outside patented ground.
3. The bearings in degrees between claim corners are: East/West lines run N 89°23' E and North/South lines run N 00°37' W, as depicted on the map or as stated on page 1 of this notice, and are surface distances. All ties to Claim monuments are in grid bearing and distance to reference monument.
4. All claims in this block are contiguous.

RECEIVED  
 BLM AZ STATE OFFICE  
 2020 NOV 23 A 9:12  
 Filed with BLM, but not  
 PHOENIX, ARIZONA





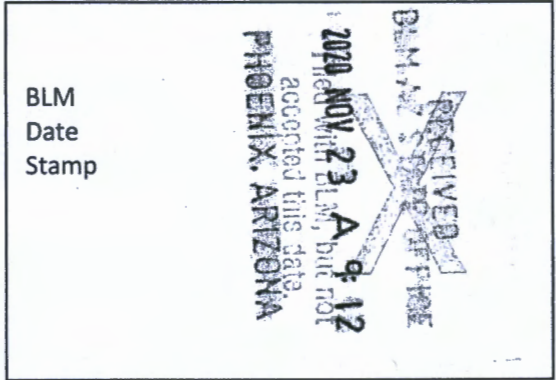
When Filed Return To:

SOUTH32 HERMOSA  
2210 East Fort Lowell Road  
TUCSON, AZ 85719

**LOCATION NOTICE FOR LODE MINING CLAIM**

NOTICE IS HEREBY GIVEN that the SHELL-998 lode mining claim has been located

By: ARIZONA MINERALS, INC.  
2210 East Fort Lowell Road  
TUCSON, AZ 85719



The general course of this claim is EAST TO WEST and it is situated in the Harshaw and Patagonia Mining Districts, SANTA CRUZ County, Arizona. This claim is 1500 feet long and 600 feet wide constituting 300 feet on each side of the centerline.

This claim runs from the location monument on the centerline on which this location notice is posted approximately 40 feet in a(n) WESTERLY direction to the WEST end line and 1460 feet in a(n) EASTERLY direction to the EAST end line. This claim is marked by six monuments, one at each corner and one at the center of each end line of the claim.

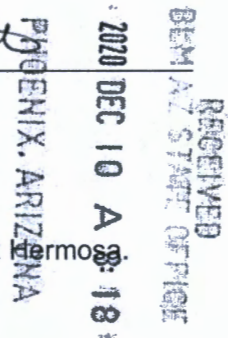
The location monument on which this notice is posted is situated within Unsurveyed Section 14, Township 23 SOUTH, Range 16 EAST, from the Gila and Salt River Meridian, and this claim encompasses portions of the following quarter section (s), section (s), Township (s) and Range (s) SW 1/4 OF UNSURVEYED SECTION 14, T. 23S, R. 16E, from the Gila and Salt River Meridian, Arizona.

The locality of this claim with reference to some natural object or permanent monument and additional information (if any) concerning its locality are as follows: THE NORTHEAST CORNER OF THE CLAIM IS LOCATED S28°24'W, 12,366.6 FEET FROM THE SOUTHWEST CORNER OF SECTION 6, T. 23S, R. 17E, FROM THE GILA AND SALT RIVER MERIDIAN, SANTA CRUZ COUNTY, AZ.

DATED AND POSTED on the ground this 7 day of NOV, 2020.

WITNESS: [Signature]

Arizona Minerals Inc.  
BY: [Signature]  
Ronald E. Stoll  
of JLF2 Consulting, LLC  
1213 N. Torino Avenue  
Tucson, AZ 85712  
AS AGENT FOR South32 Hermo



AMC 416 2183

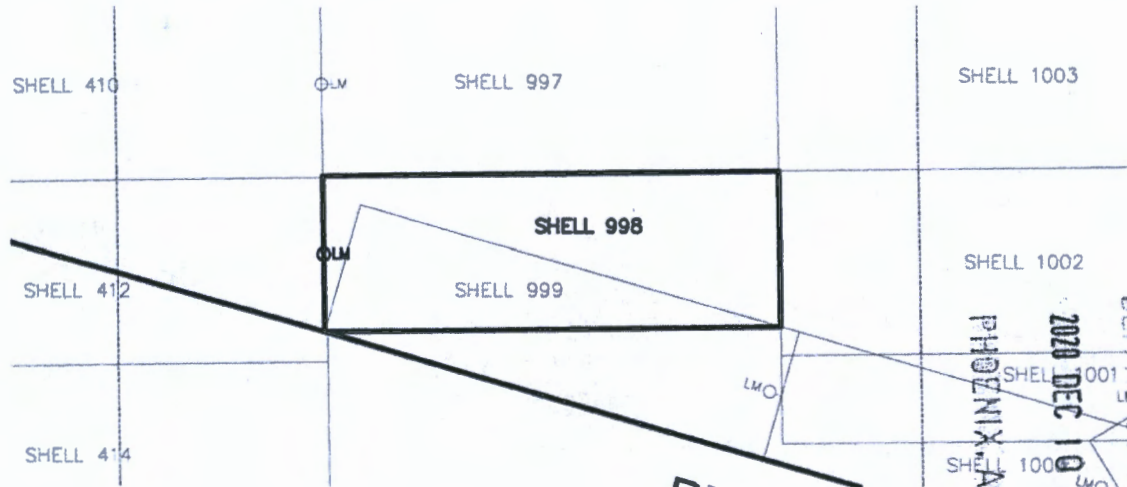
When Filed Return To:

SOUTH32 HERMOSA  
 2210 East Fort Lowell Road  
 TUCSON, AZ 85719

**MINING CLAIM MAP**

1" = 600'

LODE (X) PLACER ( )



AMC 462183

RECEIVED  
 BLM ARIZONA OFFICE  
 2020 DEC 10 3 A 8:18  
 PHOENIX, ARIZONA

1. The above map depicts the SHELL-998 mining claim, which is located in Unsurveyed Section (s) 14 Township 23S, Range 16E, Gila and Salt River Meridian, SANTA CRUZ County, Arizona.
2. The types of corner and end center monuments and location monument used are as follows: 2"X2"X5' WOOD POSTS WITH MARKED ALUMINUM TAGS, IN ROCK CAIRNS. All location monuments (LM) are offset 40 feet from the noted end center monument along the center line of the claim unless otherwise noted. The location monument has been placed outside patented ground.
3. The bearings in degrees between claim corners are: East/West lines run N 89°23' E and North/South lines run N 00°37' W, as depicted on the map or as stated on page 1 of this notice, and are surface distances. All ties to Claim monuments are in grid bearing and distance to reference monument.
4. All claims in this block are contiguous.

RECEIVED  
 BLM ARIZONA OFFICE  
 2020 NOV 23 11 A 9:12  
 accepted this date.  
 PHOENIX, ARIZONA



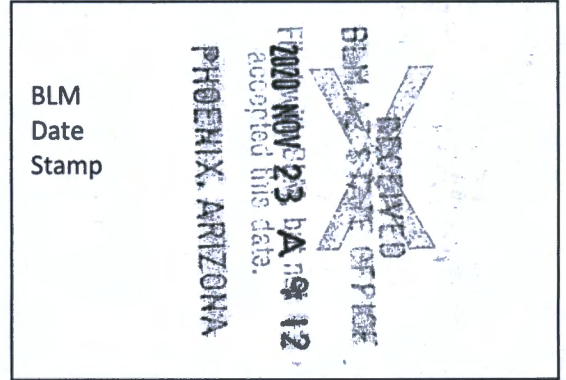
When Filed Return To:

SOUTH32 HERMOSA  
2210 East Fort Lowell Road  
TUCSON, AZ 85719

**LOCATION NOTICE FOR LODE MINING CLAIM**

NOTICE IS HEREBY GIVEN that the SHELL-999 lode mining claim has been located

By: ARIZONA MINERALS, INC.  
2210 East Fort Lowell Road  
TUCSON, AZ 85719



The general course of this claim is WEST TO EAST and it is situated in the Harshaw and Patagonia Mining Districts, SANTA CRUZ County, Arizona. This claim is 1500 feet long and 430 feet wide constituting 215 feet on each side of the centerline.

This claim runs from the location monument on the centerline on which this location notice is posted approximately 40 feet in a(n) EASTERLY direction to the EAST end line and 1460 feet in a(n) WESTERLY direction to the WEST end line. This claim is marked by six monuments, one at each corner and one at the center of each end line of the claim.

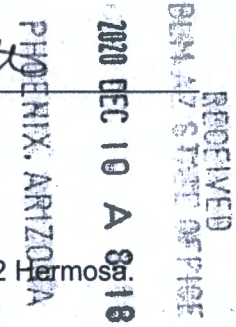
The location monument on which this notice is posted is situated within Unsurveyed Section 14, Township 23 SOUTH, Range 16 EAST, from the Gila and Salt River Meridian, and this claim encompasses portions of the following quarter section (s), section (s), Township (s) and Range (s) SW 1/4 OF UNSURVEYED SECTION 14, T. 23S, R. 16E, from the Gila and Salt River Meridian, Arizona.

The locality of this claim with reference to some natural object or permanent monument and additional information (if any) concerning its locality are as follows: THE NORTHEAST CORNER OF THE CLAIM IS LOCATED S27°02'W, 12,798.8 FEET FROM THE SOUTHWEST CORNER OF SECTION 6, T. 23S, R. 17E, FROM THE GILA AND SALT RIVER MERIDIAN, SANTA CRUZ COUNTY, AZ.

DATED AND POSTED on the ground this 7 day of Nov, 2020.

WITNESS: [Signature]

Arizona Minerals Inc.  
BY: [Signature]  
Ronald E. Stoll  
of JLF2 Consulting, LLC  
1213 N. Torino Avenue  
Tucson, AZ 85712  
AS AGENT FOR South32 Hermosa



AMC 462184

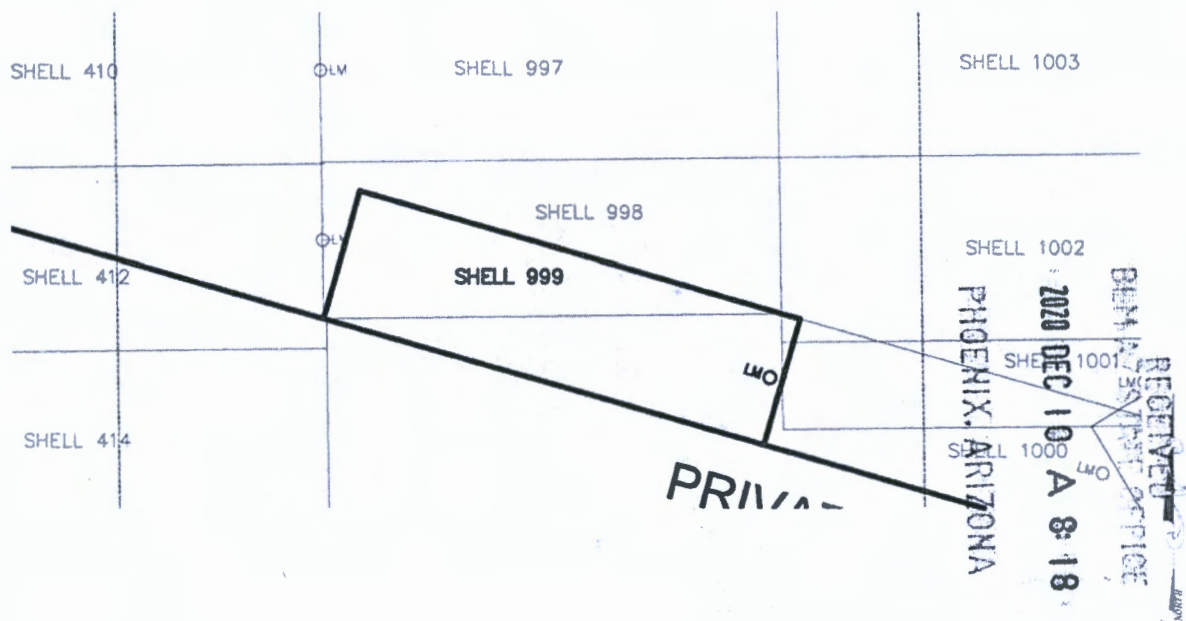
When Filed Return To:

SOUTH32 HERMOSA  
 2210 East Fort Lowell Road  
 TUCSON, AZ 85719

**MINING CLAIM MAP**

1" = 600'

LODE (X) PLACER ( )



AMC462184

1. The above map depicts the SHELL-999 mining claim, which is located in Unsurveyed Section (s) 14 Township 23S, Range 16E, Gila and Salt River Meridian, SANTA CRUZ County, Arizona.
2. The types of corner and end center monuments and location monument used are as follows: 2"X2"X5' WOOD POSTS WITH MARKED ALUMINUM TAGS, IN ROCK CAIRNS. All location monuments (LM) are offset 40 feet from the noted end center monument along the center line of the claim unless otherwise noted. The location monument has been placed outside patented ground.
3. The bearings in degrees between claim corners are: East/West lines run S 74°00' E and North/South lines run N 16°00' E, as depicted on the map or as stated on page 1 of this notice, and are surface distances. All ties to Claim monuments are in grid bearing and distance to reference monument.
4. All claims in this block are contiguous.

RECEIVED  
 DENVER DISTRICT OFFICE  
 PHOENIX, ARIZONA  
 2020 NOV 23 A 9:13  
 accepted this date.



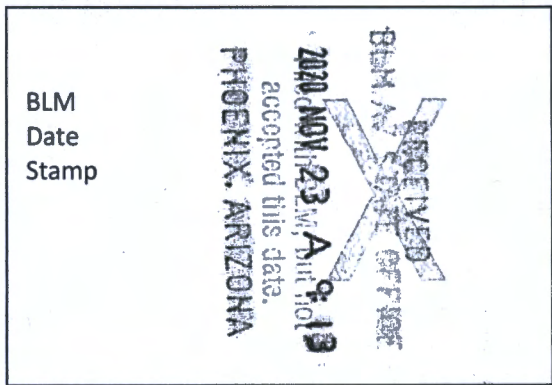
When Filed Return To:

SOUTH32 HERMOSA  
2210 East Fort Lowell Road  
TUCSON, AZ 85719

**LOCATION NOTICE FOR LODE MINING CLAIM**

NOTICE IS HEREBY GIVEN that the SHELL-1000 lode mining claim has been located

By: ARIZONA MINERALS, INC.  
2210 East Fort Lowell Road  
TUCSON, AZ 85719



The general course of this claim is WEST TO EAST and it is situated in the Harshaw and Patagonia Mining Districts, SANTA CRUZ County, Arizona. This claim is 1385 feet long and 430 feet wide constituting 215 feet on each side of the centerline.

This claim runs from the location monument on the centerline on which this location notice is posted approximately 300 feet in a(n) EASTERLY direction to the EAST end line and 1085 feet in a(n) WESTERLY direction to the WEST end line. This claim is marked by six monuments, one at each corner and one at the center of each end line of the claim.

The location monument on which this notice is posted is situated within Unsurveyed Section 14, Township 23 SOUTH, Range 16 EAST, from the Gila and Salt River Meridian, and this claim encompasses portions of the following quarter section (s), section (s), Township (s) and Range (s) SW, SE 1/4's OF UNSURVEYED SECTION 14, T. 23S, R. 16E, from the Gila and Salt River Meridian, Arizona.

The locality of this claim with reference to some natural object or permanent monument and additional information (if any) concerning its locality are as follows: THE NORTHEAST CORNER OF THE CLAIM IS LOCATED S20°50'W, 12,607.4 FEET FROM THE SOUTHWEST CORNER OF SECTION 6, T. 23S, R. 17E, FROM THE GILA AND SALT RIVER MERIDIAN, SANTA CRUZ COUNTY, AZ.

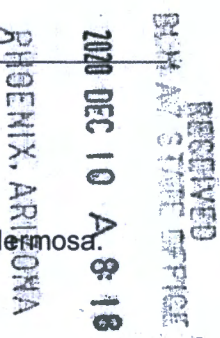
DATED AND POSTED on the ground this 7 day of NOV, 20 20.

Arizona Minerals Inc.

WITNESS: [Signature] [Signature]

BY: [Signature]

Ronald E. Stoll  
of JLF2 Consulting, LLC  
1213 N. Torino Avenue  
Tucson, AZ 85712  
AS AGENT FOR South32 Hermosa



AMC 462185

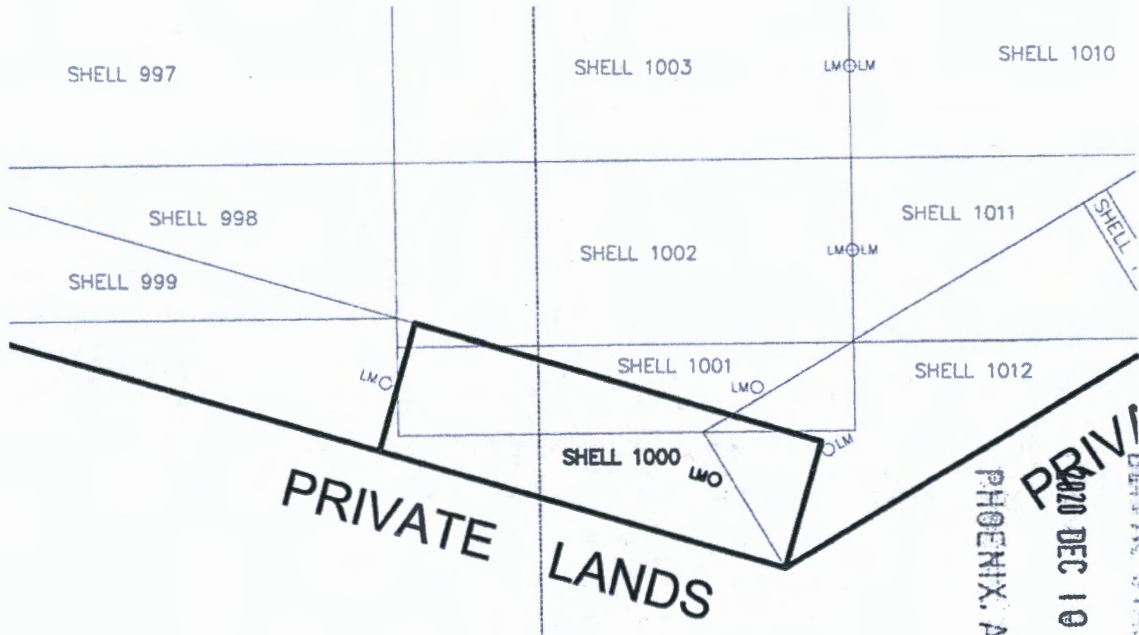
When Filed Return To:

SOUTH32 HERMOSA  
2210 East Fort Lowell Road  
TUCSON, AZ 85719

MINING CLAIM MAP

1" = 600'

LODE (X) PLACER ( )



ANCL 62185

RECEIVED  
BLM STATE OFFICE  
2020 DEC 10 A 8:19  
PHOENIX, ARIZONA

1. The above map depicts the SHELL-1000 mining claim, which is located in Unsurveyed Section(s) 14, Township 23S, Range 16E, Gila and Salt River Meridian, SANTA CRUZ County, Arizona.
2. The types of corner and end center monuments and location monument used are as follows: 2"X2"X5' WOOD POSTS WITH MARKED ALUMINUM TAGS, IN ROCK CAIRNS. All location monuments (LM) are offset 40 feet from the noted end center monument along the center line of the claim unless otherwise noted. The location monument has been placed outside patented ground.
3. The bearings in degrees between claim corners are: East/West lines run S 74°00' E and North/South lines run N 16°00' E, as depicted on the map or as stated on page 1 of this notice, and are surface distances. All ties to Claim monuments are in grid bearing and distance to reference monument.
4. All claims in this block are contiguous.

RECEIVED  
BLM STATE OFFICE  
2020 NOV 23 A 9:13  
Filed with BLM, but not  
PHOENIX, ARIZONA



When Filed Return To:

SOUTH32 HERMOSA  
2210 East Fort Lowell Road  
TUCSON, AZ 85719

**LOCATION NOTICE FOR LODE MINING CLAIM**

NOTICE IS HEREBY GIVEN that the SHELL-1001 lode mining claim has been located

By: ARIZONA MINERALS, INC.  
2210 East Fort Lowell Road  
TUCSON, AZ 85719



The general course of this claim is WEST TO EAST and it is situated in the Harshaw and Patagonia Mining Districts, SANTA CRUZ County, Arizona. This claim is 1500 feet long and 286 feet wide constituting 143 feet on each side of the centerline.

This claim runs from the location monument on the centerline on which this location notice is posted approximately 320 feet in a(n) EASTERLY direction to the EAST end line and 1180 feet in a(n) WESTERLY direction to the WEST end line. This claim is marked by six monuments, one at each corner and one at the center of each end line of the claim.

The location monument on which this notice is posted is situated within Unsurveyed Section 14, Township 23 SOUTH, Range 16 EAST, from the Gila and Salt River Meridian, and this claim encompasses portions of the following quarter section (s), section (s), Township (s) and Range (s) SE 1/4 OF UNSURVEYED SECTION 14, T. 23S, R. 16E, from the Gila and Salt River Meridian, Arizona.

The locality of this claim with reference to some natural object or permanent monument and additional information (if any) concerning its locality are as follows: THE NORTHEAST CORNER OF THE CLAIM IS LOCATED S20°54'W, 12,268.8 FEET FROM THE SOUTHWEST CORNER OF SECTION 6, T. 23S, R. 17E, FROM THE GILA AND SALT RIVER MERIDIAN, SANTA CRUZ COUNTY, AZ.

DATED AND POSTED on the ground this 7 day of Nov, 2020.

Arizona Minerals Inc.

WITNESS: [Signature]

BY: [Signature]

Ronald E. Stoll  
of JLF2 Consulting, LLC  
1213 N. Torino Avenue  
Tucson, AZ 85712  
AS AGENT FOR South32 Hermosa.

2020 DEC 10 A 8:18  
RECEIVED  
BLM AZ STAFF OFFICE  
PHOENIX, ARIZONA

AMC467185

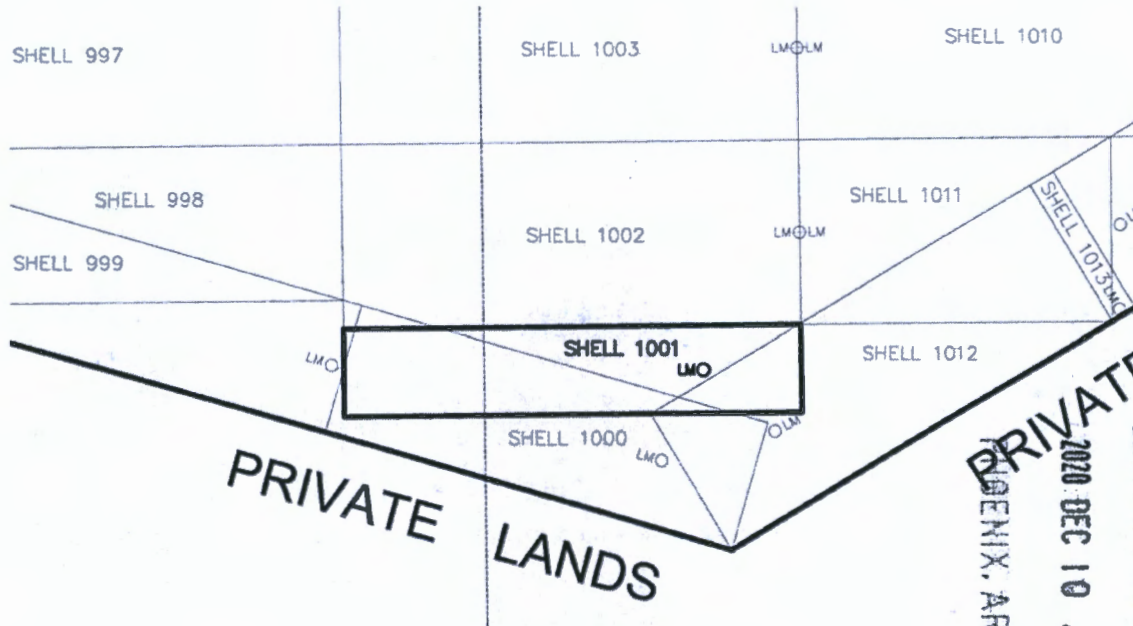
When Filed Return To:

SOUTH32 HERMOSA  
2210 East Fort Lowell Road  
TUCSON, AZ 85719

MINING CLAIM MAP

1" = 600'

LODE (X) PLACER ( )



AHC462186

**RECEIVED**  
 DEPT. OF STATE OFFICE  
 2020 DEC 10 A 8:18  
 PHOENIX, ARIZONA

1. The above map depicts the SHELL-1001 mining claim, which is located in Unsurveyed Section (s) 14 Township 23S, Range 16E, Gila and Salt River Meridian, SANTA CRUZ County, Arizona.
2. The types of corner and end center monuments and location monument used are as follows: 2"X2"X5' WOOD POSTS WITH MARKED ALUMINUM TAGS, IN ROCK CAIRNS. All location monuments (LM) are offset 40 feet from the noted end center monument along the center line of the claim unless otherwise noted. The location monument has been placed outside patented ground.
3. The bearings in degrees between claim corners are: East/West lines run N 89°23' E and North/South lines run N 00°37' W , as depicted on the map or as stated on page 1 of this notice, and are surface distances. All ties to Claim monuments are in grid bearing and distance to reference monument.
4. All claims in this block are contiguous.

**RECEIVED**  
 DEPT. OF STATE OFFICE  
 2020 NOV 22, A 8:13  
 accepted this date.  
 PHOENIX, ARIZONA



When Filed Return To:

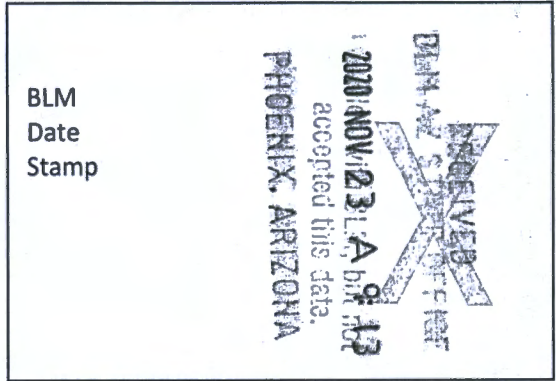
SOUTH32 HERMOSA  
2210 East Fort Lowell Road  
TUCSON, AZ 85719



**LOCATION NOTICE FOR LODE MINING CLAIM**

NOTICE IS HEREBY GIVEN that the SHELL-1002 lode mining claim has been located

By: ARIZONA MINERALS, INC.  
2210 East Fort Lowell Road  
TUCSON, AZ 85719



The general course of this claim is WEST TO EAST and it is situated in the Harshaw and Patagonia Mining Districts, SANTA CRUZ County, Arizona. This claim is 1500 feet long and 600 feet wide constituting 300 feet on each side of the centerline.

This claim runs from the location monument on the centerline on which this location notice is posted approximately 40 feet in a(n) EASTERLY direction to the EAST end line and 1460 feet in a(n) WESTERLY direction to the WEST end line. This claim is marked by six monuments, one at each corner and one at the center of each end line of the claim.

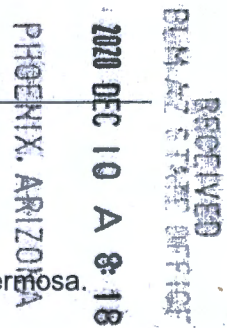
The location monument on which this notice is posted is situated within Unsurveyed Section 14, Township 23 SOUTH, Range 16 EAST, from the Gila and Salt River Meridian, and this claim encompasses portions of the following quarter section (s), section (s), Township (s) and Range (s) SW, SE 1/4's OF UNSURVEYED SECTION 14, T. 23S, R. 16E, from the Gila and Salt River Meridian, Arizona.

The locality of this claim with reference to some natural object or permanent monument and additional information (if any) concerning its locality are as follows: THE NORTHEAST CORNER OF THE CLAIM IS LOCATED S21°58'W, 11,712.7 FEET FROM THE SOUTHWEST CORNER OF SECTION 6, T. 23S, R. 17E, FROM THE GILA AND SALT RIVER MERIDIAN, SANTA CRUZ COUNTY, AZ.

DATED AND POSTED on the ground this 7 day of NOV, 2020.

WITNESS: Thad Stoll

Arizona Minerals Inc.  
BY: RM & Stoll  
Ronald E. Stoll  
of JLF2 Consulting, LLC  
1213 N. Torino Avenue  
Tucson, AZ 85712  
AS AGENT FOR South32 Hermosa.



AMC 462187

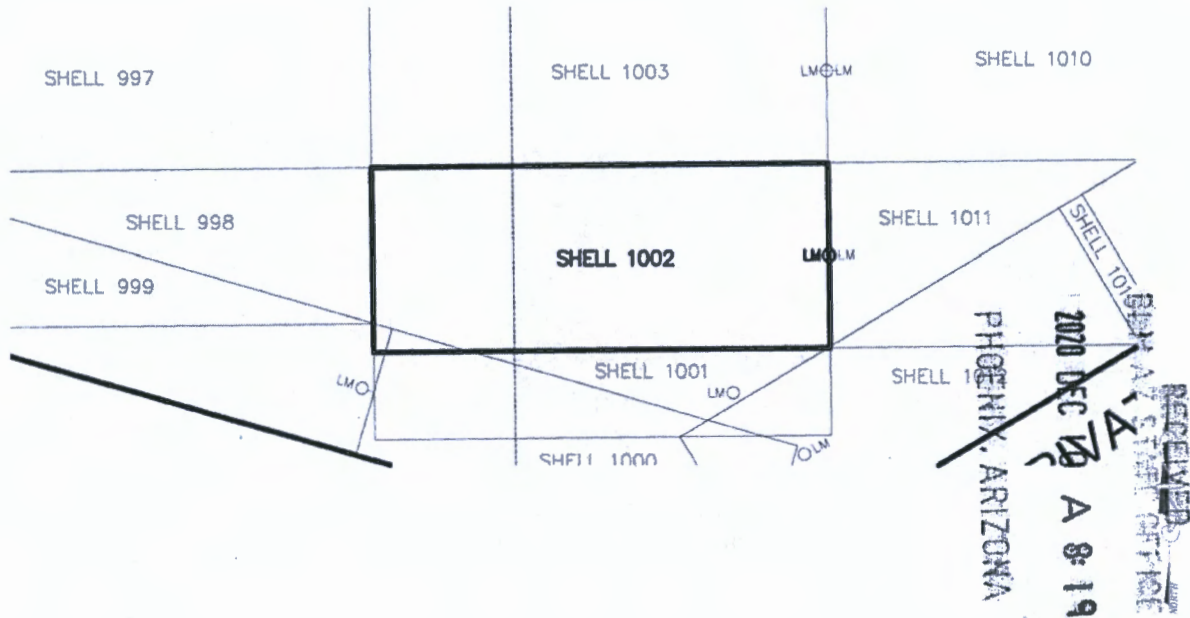
When Filed Return To:

SOUTH32 HERMOSA  
 2210 East Fort Lowell Road  
 TUCSON, AZ 85719

**MINING CLAIM MAP**

1" = 600'

LODE (X) PLACER ( )



1. The above map depicts the SHELL-1002 mining claim, which is located in Unsurveyed Section (s) 14 Township 23S, Range 16E, Gila and Salt River Meridian, SANTA CRUZ County, Arizona.
2. The types of corner and end center monuments and location monument used are as follows: 2"X2"X5' WOOD POSTS WITH MARKED ALUMINUM TAGS, IN ROCK CAIRNS. All location monuments (LM) are offset 40 feet from the noted end center monument along the center line of the claim unless otherwise noted. The location monument has been placed outside patented ground.
3. The bearings in degrees between claim corners are: East/West lines run N 89°23' E and North/South lines run N 00°37' W, as depicted on the map or as stated on page 1 of this notice, and are surface distances. All ties to Claim monuments are in grid bearing and distance to reference monument.
4. All claims in this block are contiguous.

RECEIVED  
 SURVEY OFFICE  
 2020 NOV 23 AM 9:13  
 accepted this date.  
 PHOENIX, ARIZONA

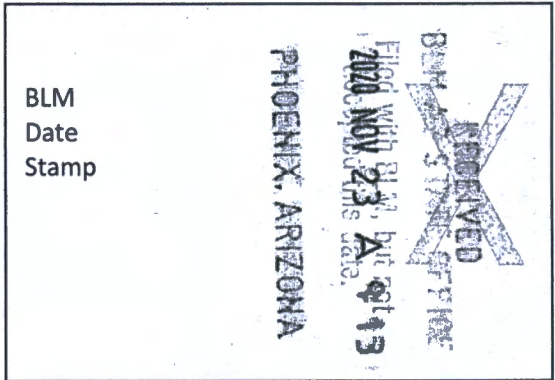
When Filed Return To:

SOUTH32 HERMOSA  
2210 East Fort Lowell Road  
TUCSON, AZ 85719

**LOCATION NOTICE FOR LODE MINING CLAIM**

NOTICE IS HEREBY GIVEN that the SHELL-1003 lode mining claim has been located

By: ARIZONA MINERALS, INC.  
2210 East Fort Lowell Road  
TUCSON, AZ 85719



The general course of this claim is WEST TO EAST and it is situated in the Harshaw and Patagonia Mining Districts, SANTA CRUZ County, Arizona. This claim is 1500 feet long and 600 feet wide constituting 300 feet on each side of the centerline.

This claim runs from the location monument on the centerline on which this location notice is posted approximately 40 feet in a(n) EASTERLY direction to the EAST end line and 1460 feet in a(n) WESTERLY direction to the WEST end line.

This claim is marked by six monuments, one at each corner and one at the center of each end line of the claim.

The location monument on which this notice is posted is situated within Unsurveyed Section 14, Township 23 SOUTH, Range 16 EAST, from the Gila and Salt River Meridian, and this claim encompasses portions of the following quarter section (s), section (s), Township (s) and Range (s) SW, SE 1/4's OF UNSURVEYED SECTION 14, T. 23S, R. 16E, from the Gila and Salt River Meridian, Arizona.

The locality of this claim with reference to some natural object or permanent monument and additional information (if any) concerning its locality are as follows: THE NORTHEAST CORNER OF THE CLAIM IS LOCATED S23°09'W, 11,161.1 FEET FROM THE SOUTHWEST CORNER OF SECTION 6, T. 23S, R. 17E, FROM THE GILA AND SALT RIVER MERIDIAN, SANTA CRUZ COUNTY, AZ.

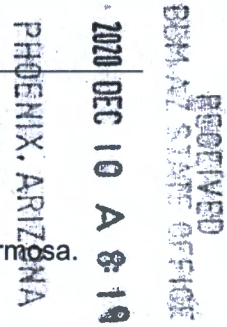
DATED AND POSTED on the ground this 7 day of Nov, 20 20.

Arizona Minerals Inc.

WITNESS: [Signature]

BY: [Signature]

Ronald E. Stoll  
of JLF2 Consulting, LLC  
1213 N. Torino Avenue  
Tucson, AZ 85712  
AS AGENT FOR South32 Hermosa.



AMC 162188

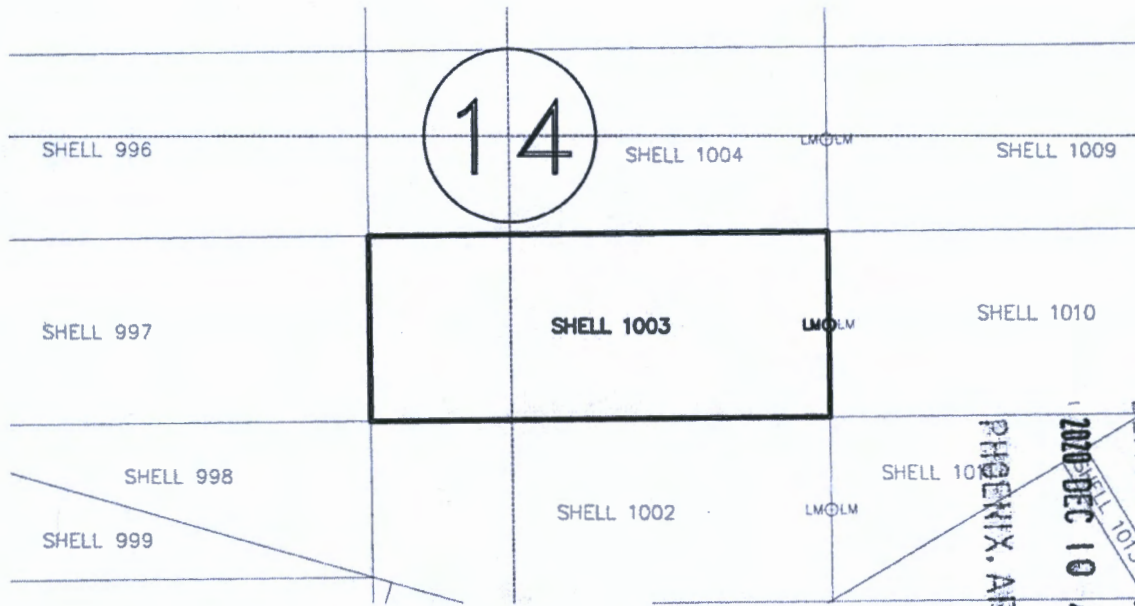
When Filed Return To:

SOUTH32 HERMOSA  
2210 East Fort Lowell Road  
TUCSON, AZ 85719

MINING CLAIM MAP

1" = 600'

LODE (X) PLACER ( )



AMC462188

1. The above map depicts the SHELL-1003 mining claim, which is located in Unsurveyed Section (s) 14 Township 23S, Range 16E, Gila and Salt River Meridian, SANTA CRUZ County, Arizona.
2. The types of corner and end center monuments and location monument used are as follows: 2"X2"X5' WOOD POSTS WITH MARKED ALUMINUM TAGS, IN ROCK CAIRNS. All location monuments (LM) are offset 40 feet from the noted end center monument along the center line of the claim unless otherwise noted. The location monument has been placed outside patented ground.
3. The bearings in degrees between claim corners are: East/West lines run N 89°23' E and North/South lines run N 00°37' W , as depicted on the map or as stated on page 1 of this notice, and are surface distances. All ties to Claim monuments are in grid bearing and distance to reference monument.
4. All claims in this block are contiguous.

RECEIVED  
 BLM AND STATE OFFICE  
 2020 DEC 10 A 8:19  
 PHOENIX, ARIZONA

RECEIVED  
 BLM AND STATE OFFICE  
 2020 NOV 23 A 9:19  
 PHOENIX, ARIZONA



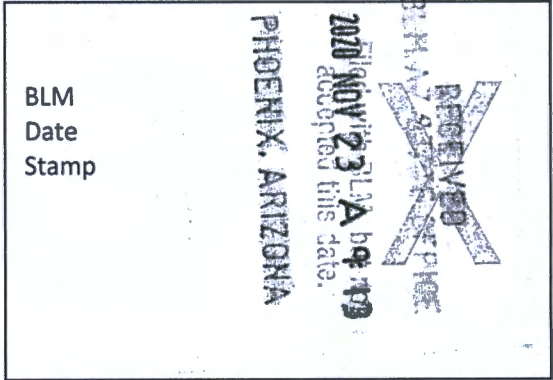
When Filed Return To:

SOUTH32 HERMOSA  
2210 East Fort Lowell Road  
TUCSON, AZ 85719

**LOCATION NOTICE FOR LODE MINING CLAIM**

NOTICE IS HEREBY GIVEN that the SHELL-1004 lode mining claim has been located

By: ARIZONA MINERALS, INC.  
2210 East Fort Lowell Road  
TUCSON, AZ 85719



The general course of this claim is WEST TO EAST and it is situated in the Harshaw and Patagonia Mining Districts, SANTA CRUZ County, Arizona. This claim is 1500 feet long and 600 feet wide constituting 300 feet on each side of the centerline.

This claim runs from the location monument on the centerline on which this location notice is posted approximately 40 feet in a(n) EASTERLY direction to the EAST end line and 1460 feet in a(n) WESTERLY direction to the WEST end line. This claim is marked by six monuments, one at each corner and one at the center of each end line of the claim.

The location monument on which this notice is posted is situated within Unsurveyed Section 14, Township 23 SOUTH, Range 16 EAST, from the Gila and Salt River Meridian, and this claim encompasses portions of the following quarter section (s), section (s), Township (s) and Range (s) NW, NE, SW, SE 1/4's OF UNSURVEYED SECTION 14, T. 23S, R. 16E, from the Gila and Salt River Meridian, Arizona.

The locality of this claim with reference to some natural object or permanent monument and additional information (if any) concerning its locality are as follows: THE NORTHEAST CORNER OF THE CLAIM IS LOCATED S24°28'W, 10,614.8 FEET FROM THE SOUTHWEST CORNER OF SECTION 6, T. 23S, R. 17E, FROM THE GILA AND SALT RIVER MERIDIAN, SANTA CRUZ COUNTY, AZ.

DATED AND POSTED on the ground this 7 day of Nov, 2020

WITNESS: [Signature]

Arizona Minerals Inc.  
BY: [Signature]  
Ronald E. Stoll  
of JLF2 Consulting, LLC  
1213 N. Torino Avenue  
Tucson, AZ 85712  
AS AGENT FOR South32 Hermosa.

PHOENIX, ARIZONA  
2020 DEC 10 A 8:19  
RECEIVED  
DEM AZ STAFF OFFICE

AMC462189

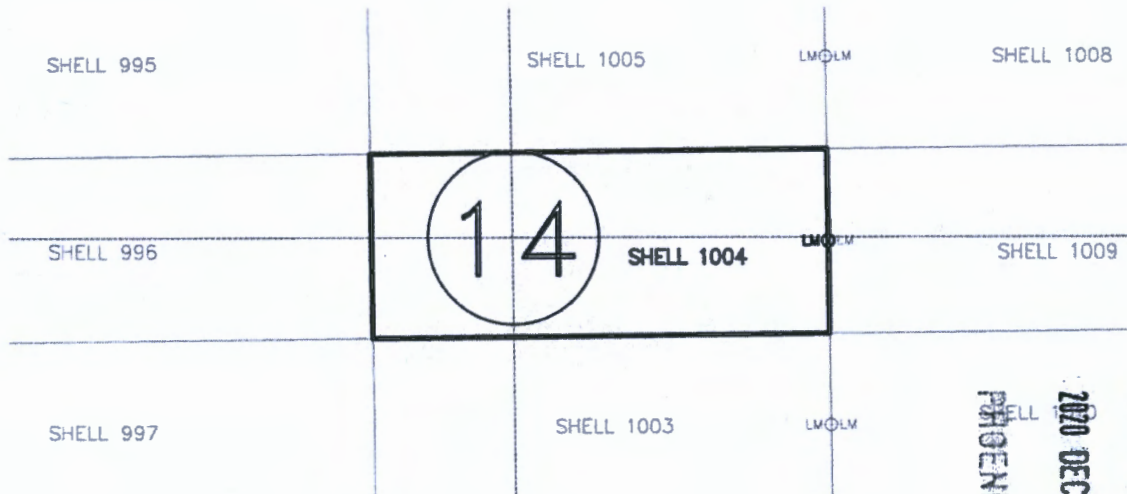
When Filed Return To:

SOUTH32 HERMOSA  
2210 East Fort Lowell Road  
TUCSON, AZ 85719

MINING CLAIM MAP

1" = 600'

LODE (X) PLACER ( )



AMC462189

RECEIVED  
BIRMINGHAM STATE OFFICE  
2020 DEC 10 A 8:19  
PHOENIX, ARIZONA

1. The above map depicts the SHELL-1004 mining claim, which is located in Unsurveyed Section 14 Township 23S, Range 16E, Gila and Salt River Meridian, SANTA CRUZ County, Arizona.
2. The types of corner and end center monuments and location monument used are as follows: 2"X2"X5' WOOD POSTS WITH MARKED ALUMINUM TAGS, IN ROCK CAIRNS. All location monuments (LM) are offset 40 feet from the noted end center monument along the center line of the claim unless otherwise noted. The location monument has been placed outside patented ground.
3. The bearings in degrees between claim corners are: East/West lines run N 89°23' E and North/South lines run N 00°37' W , as depicted on the map or as stated on page 1 of this notice, and are surface distances. All ties to Claim monuments are in grid bearing and distance to reference monument.
4. All claims in this block are contiguous.

RECEIVED  
BIRMINGHAM STATE OFFICE  
2020 NOV 23 A 9:13  
accepted this date.  
PHOENIX, ARIZONA



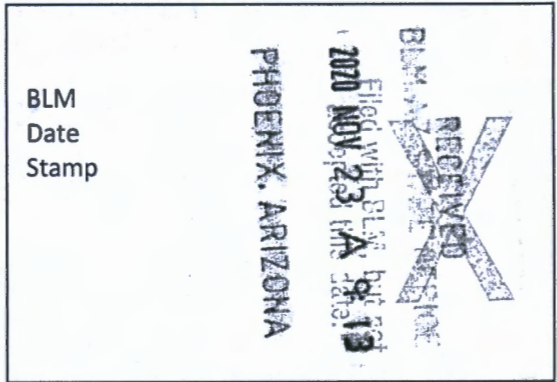
When Filed Return To:

SOUTH32 HERMOSA  
2210 East Fort Lowell Road  
TUCSON, AZ 85719

**LOCATION NOTICE FOR LODE MINING CLAIM**

NOTICE IS HEREBY GIVEN that the SHELL-1005 lode mining claim has been located

By: ARIZONA MINERALS, INC.  
2210 East Fort Lowell Road  
TUCSON, AZ 85719



The general course of this claim is WEST TO EAST and it is situated in the Harshaw and Patagonia Mining Districts, SANTA CRUZ County, Arizona. This claim is 1500 feet long and 600 feet wide constituting 300 feet on each side of the centerline.

This claim runs from the location monument on the centerline on which this location notice is posted approximately 40 feet in a(n) EASTERLY direction to the EAST end line and 1460 feet in a(n) WESTERLY direction to the WEST end line. This claim is marked by six monuments, one at each corner and one at the center of each end line of the claim.

The location monument on which this notice is posted is situated within Unsurveyed Section 14, Township 23 SOUTH, Range 16 EAST, from the Gila and Salt River Meridian, and this claim encompasses portions of the following quarter section (s), section (s), Township (s) and Range (s) NW, NE 1/4's OF UNSURVEYED SECTION 14, T. 23S, R. 16E, from the Gila and Salt River Meridian, Arizona.

The locality of this claim with reference to some natural object or permanent monument and additional information (if any) concerning its locality are as follows: THE NORTHEAST CORNER OF THE CLAIM IS LOCATED S25°54'W, 10,074.5 FEET FROM THE SOUTHWEST CORNER OF SECTION 6, T. 23S, R. 17E, FROM THE GILA AND SALT RIVER MERIDIAN, SANTA CRUZ COUNTY, AZ.

DATED AND POSTED on the ground this 7 day of NOV, 20 20.

WITNESS: [Signatures]

Arizona Minerals Inc.  
BY: [Signature]  
Ronald E. Stoll  
of JLF2 Consulting, LLC  
1213 N. Torino Avenue  
Tucson, AZ 85712  
AS AGENT FOR South32 Hermosa.

PHOENIX, ARIZONA  
2020 DEC 10 A 8:19  
RECEIVED  
BLM AZ STATE OFFICE  
AMC462190

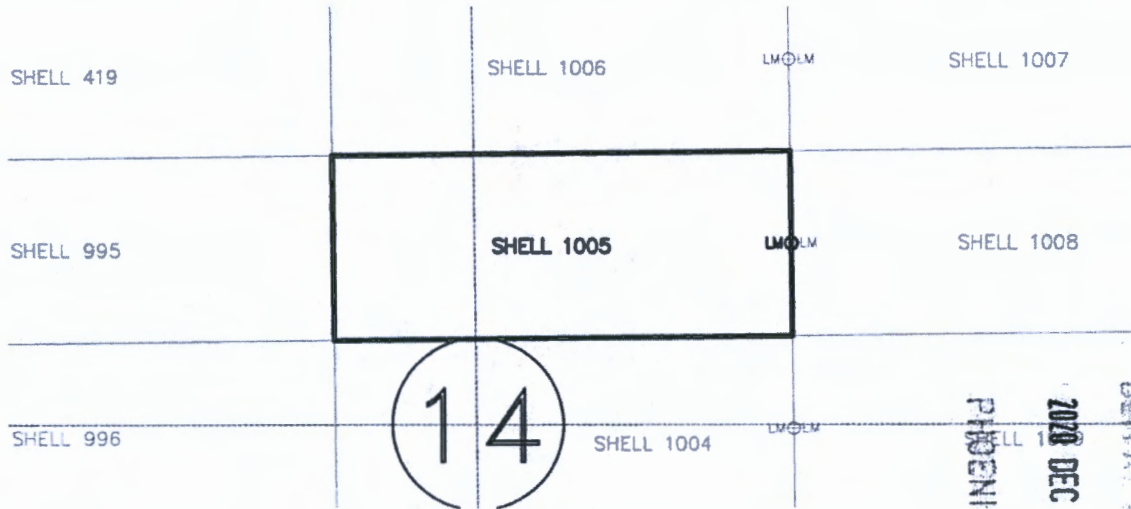
When Filed Return To:

SOUTH32 HERMOSA  
2210 East Fort Lowell Road  
TUCSON, AZ 85719

MINING CLAIM MAP

1" = 600'

LODE ( X ) PLACER ( )



AMC 452190

RECEIVED  
 DEPT. OF STATE OFFICE  
 2020 DEC 10 A 8:19  
 PHOENIX, ARIZONA

1. The above map depicts the SHELL-1005 mining claim, which is located in Unsurveyed Section (s) 14 Township 23S, Range 16E, Gila and Salt River Meridian, SANTA CRUZ County, Arizona.
2. The types of corner and end center monuments and location monument used are as follows: 2"X2"X5' WOOD POSTS WITH MARKED ALUMINUM TAGS, IN ROCK CAIRNS. All location monuments (LM) are offset 40 feet from the noted end center monument along the center line of the claim unless otherwise noted. The location monument has been placed outside patented ground.
3. The bearings in degrees between claim corners are: East/West lines run N 89°23' E and North/South lines run N 00°37' W , as depicted on the map or as stated on page 1 of this notice, and are surface distances. All ties to Claim monuments are in grid bearing and distance to reference monument.
4. All claims in this block are contiguous.

RECEIVED  
 DEPT. OF STATE OFFICE  
 Filed With S.M.A., but not  
 2020 NOV 23 A 1:13  
 PHOENIX, ARIZONA





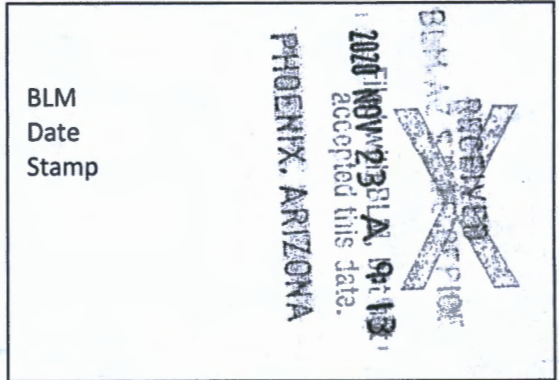
When Filed Return To:

SOUTH32 HERMOSA  
2210 East Fort Lowell Road  
TUCSON, AZ 85719

**LOCATION NOTICE FOR LODE MINING CLAIM**

NOTICE IS HEREBY GIVEN that the SHELL-1006 lode mining claim has been located

By: ARIZONA MINERALS, INC.  
2210 East Fort Lowell Road  
TUCSON, AZ 85719



The general course of this claim is WEST TO EAST and it is situated in the Harshaw and Patagonia Mining Districts, SANTA CRUZ County, Arizona. This claim is 1500 feet long and 600 feet wide constituting 300 feet on each side of the centerline.

This claim runs from the location monument on the centerline on which this location notice is posted approximately 40 feet in a(n) EASTERLY direction to the EAST end line and 1460 feet in a(n) WESTERLY direction to the WEST end line. This claim is marked by six monuments, one at each corner and one at the center of each end line of the claim.

The location monument on which this notice is posted is situated within Unsurveyed Section 14, Township 23 SOUTH, Range 16 EAST, from the Gila and Salt River Meridian, and this claim encompasses portions of the following quarter section (s), section (s), Township (s) and Range (s) NW, NE 1/4's OF UNSURVEYED SECTION 14, T. 23S, R. 16E, from the Gila and Salt River Meridian, Arizona.

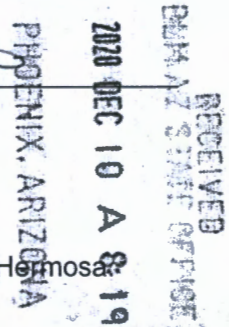
The locality of this claim with reference to some natural object or permanent monument and additional information (if any) concerning its locality are as follows: THE NORTHEAST CORNER OF THE CLAIM IS LOCATED S27°31'W, 9,541.4 FEET FROM THE SOUTHWEST CORNER OF SECTION 6, T. 23S, R. 17E, FROM THE GILA AND SALT RIVER MERIDIAN, SANTA CRUZ COUNTY, AZ.

DATED AND POSTED on the ground this 7 day of NOV, 2020.

WITNESS: Mark Tubing

Arizona Minerals Inc.  
BY: RM & Stoll

Ronald E. Stoll  
of JLF2 Consulting, LLC  
1213 N. Torino Avenue  
Tucson, AZ 85712  
AS AGENT FOR South32 Hermosa



AMC462191

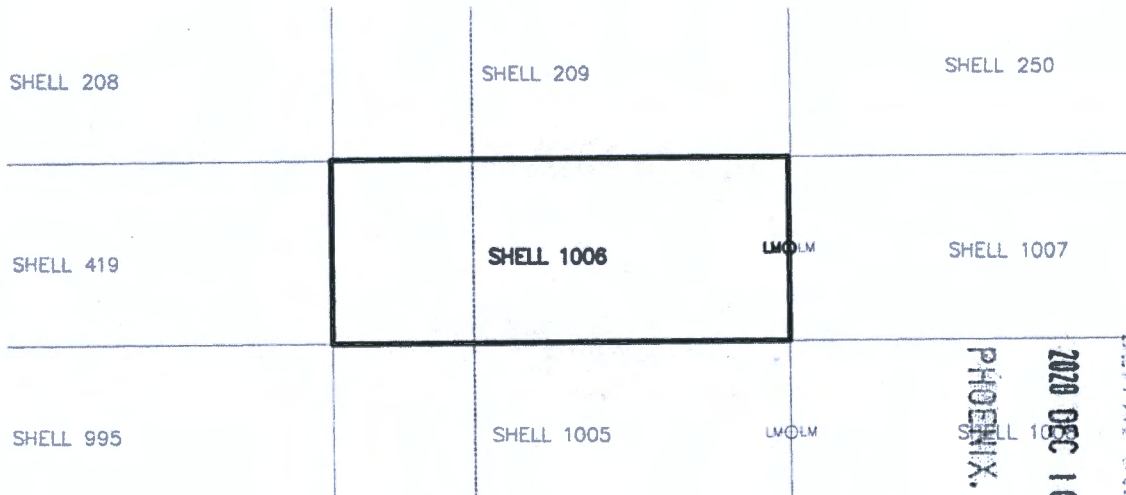
When Filed Return To:

SOUTH32 HERMOSA  
2210 East Fort Lowell Road  
TUCSON, AZ 85719

MINING CLAIM MAP

1" = 600'

LODE (X) PLACER ( )



ANHC462191

RECEIVED  
BIMMAY STATE OFFICE  
2020 DEC 10 A 8 19  
PHOENIX, ARIZONA

1. The above map depicts the SHELL-1006 mining claim, which is located in Unsurveyed Section (s) 14 Township 23S, Range 16E, Gila and Salt River Meridian, SANTA CRUZ County, Arizona.
2. The types of corner and end center monuments and location monument used are as follows: 2"X2"X5' WOOD POSTS WITH MARKED ALUMINUM TAGS, IN ROCK CAIRNS. All location monuments (LM) are offset 40 feet from the noted end center monument along the center line of the claim unless otherwise noted. The location monument has been placed outside patented ground.
3. The bearings in degrees between claim corners are: East/West lines run N 89°23' E and North/South lines run N 00°37' W , as depicted on the map or as stated on page 1 of this notice, and are surface distances. All ties to Claim monuments are in grid bearing and distance to reference monument.
4. All claims in this block are contiguous.

RECEIVED  
BIMMAY STATE OFFICE  
2020 NOV 23, AM 10:13  
accepted this date.  
PHOENIX, ARIZONA



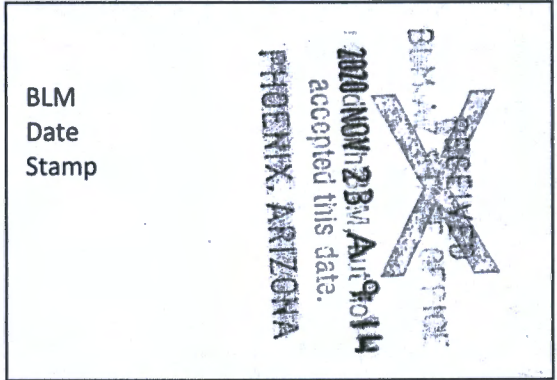
When Filed Return To:

SOUTH32 HERMOSA  
2210 East Fort Lowell Road  
TUCSON, AZ 85719

**LOCATION NOTICE FOR LODE MINING CLAIM**

NOTICE IS HEREBY GIVEN that the SHELL-1007 lode mining claim has been located

By: ARIZONA MINERALS, INC.  
2210 East Fort Lowell Road  
TUCSON, AZ 85719



The general course of this claim is EAST TO WEST and it is situated in the Harshaw and Patagonia Mining Districts, SANTA CRUZ County, Arizona. This claim is 1500 feet long and 600 feet wide constituting 300 feet on each side of the centerline.

This claim runs from the location monument on the centerline on which this location notice is posted approximately 40 feet in a(n) WESTERLY direction to the WEST end line and 1460 feet in a(n) EASTERLY direction to the EAST end line.

This claim is marked by six monuments, one at each corner and one at the center of each end line of the claim.

The location monument on which this notice is posted is situated within Unsurveyed Section 14, Township 23 SOUTH, Range 16 EAST, from the Gila and Salt River Meridian, and this claim encompasses portions of the following quarter section (s), section (s), Township (s) and Range (s) NE 1/4 OF UNSURVEYED SECTION 14, T. 23S, R. 16E, from the Gila and Salt River Meridian, Arizona.

The locality of this claim with reference to some natural object or permanent monument and additional information (if any) concerning its locality are as follows: THE NORTHEAST CORNER OF THE CLAIM IS LOCATED S19°00'W, 8,932.6 FEET FROM THE SOUTHWEST CORNER OF SECTION 6, T23S, R17E, FROM THE GILA AND SALT RIVER MERIDIAN, SANTA CRUZ COUNTY, AZ.

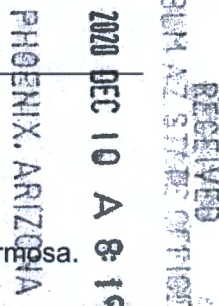
DATED AND POSTED on the ground this 7 day of NOV, 20 20.

WITNESS: Mark Kelly

Arizona Minerals Inc.

BY: RM & Stoll

Ronald E. Stoll  
of JLF2 Consulting, LLC  
1213 N. Torino Avenue  
Tucson, AZ 85712  
AS AGENT FOR South32 Hermosa.



AMC 462192

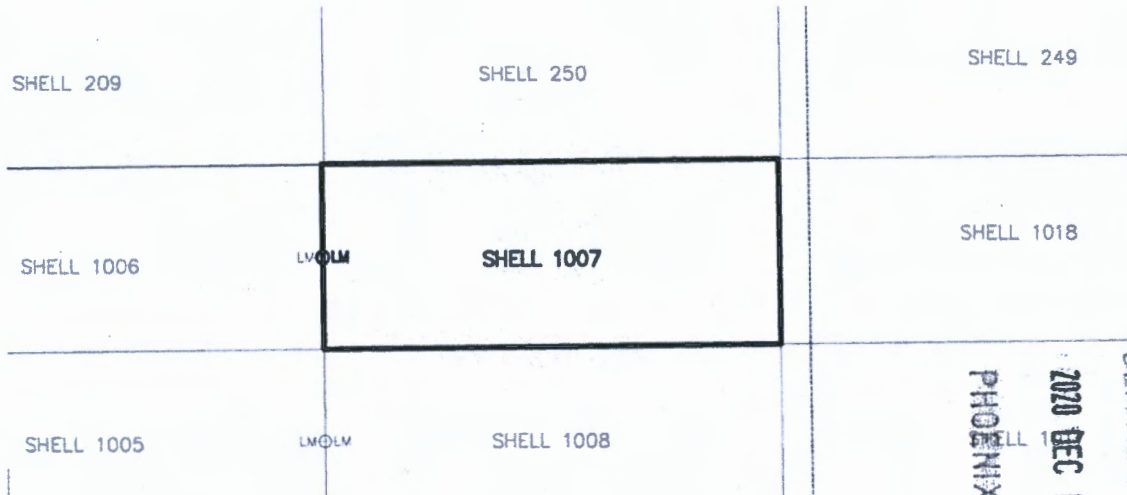
When Filed Return To:

SOUTH32 HERMOSA  
2210 East Fort Lowell Road  
TUCSON, AZ 85719

MINING CLAIM MAP

1" = 600'

LODE (X) PLACER ( )



AMC462192

RECEIVED  
 DEPT. OF METALS & MINES  
 DIVISION OF STATE OFFICE  
 2020 DEC 10 A 8:14  
 PHOENIX, ARIZONA

1. The above map depicts the SHELL-1007 mining claim, which is located in Unsurveyed Section(s) 14 Township 23S, Range 16E, Gila and Salt River Meridian, SANTA CRUZ County, Arizona.
2. The types of corner and end center monuments and location monument used are as follows: 2"X2"X5' WOOD POSTS WITH MARKED ALUMINUM TAGS, IN ROCK CAIRNS. All location monuments (LM) are offset 40 feet from the noted end center monument along the center line of the claim unless otherwise noted. The location monument has been placed outside patented ground.
3. The bearings in degrees between claim corners are: East/West lines run N 89°23' E and North/South lines run N 00°37' W , as depicted on the map or as stated on page 1 of this notice, and are surface distances. All ties to Claim monuments are in grid bearing and distance to reference monument.
4. All claims in this block are contiguous.

RECEIVED  
 DEPT. OF METALS & MINES  
 DIVISION OF STATE OFFICE  
 2020 NOV 23 10:40 AM  
 accepted this date.  
 PHOENIX, ARIZONA

When Filed Return To:

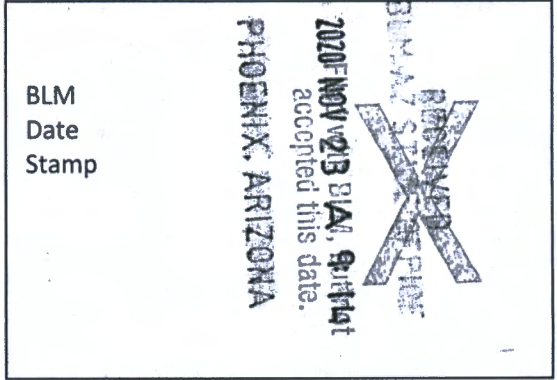
SOUTH32 HERMOSA  
2210 East Fort Lowell Road  
TUCSON, AZ 85719



**LOCATION NOTICE FOR LODE MINING CLAIM**

NOTICE IS HEREBY GIVEN that the SHELL-1008 lode mining claim has been located

By: ARIZONA MINERALS, INC.  
2210 East Fort Lowell Road  
TUCSON, AZ 85719



The general course of this claim is EAST TO WEST and it is situated in the Harshaw and Patagonia Mining Districts, SANTA CRUZ County, Arizona. This claim is 1500 feet long and 600 feet wide constituting 300 feet on each side of the centerline.

This claim runs from the location monument on the centerline on which this location notice is posted approximately 40 feet in a(n) WESTERLY direction to the WEST end line and 1460 feet in a(n) EASTERLY direction to the EAST end line. This claim is marked by six monuments, one at each corner and one at the center of each end line of the claim.

The location monument on which this notice is posted is situated within Unsurveyed Section 14, Township 23 SOUTH, Range 16 EAST, from the Gila and Salt River Meridian, and this claim encompasses portions of the following quarter section (s), section (s), Township (s) and Range (s) NE 1/4 OF UNSURVEYED SECTION 14, T. 23S, R. 16E, from the Gila and Salt River Meridian, Arizona.

The locality of this claim with reference to some natural object or permanent monument and additional information (if any) concerning its locality are as follows: THE NORTHEAST CORNER OF THE CLAIM IS LOCATED S17°47'W, 9,500.0 FEET FROM THE SOUTHWEST CORNER OF SECTION 6, T23S, R17E, FROM THE GILA AND SALT RIVER MERIDIAN, SANTA CRUZ COUNTY, AZ.

DATED AND POSTED on the ground this 7 day of NOV, 2020.

WITNESS: Mark Kelly

Arizona Minerals Inc.

BY: RM & Stoll

Ronald E. Stoll  
of JLF2 Consulting, LLC  
1213 N. Torino Avenue  
Tucson, AZ 85712  
AS AGENT FOR South32 Hermosa

PHOENIX, ARIZONA

2020 DEC 10 A 8:49

RECEIVED BLM AZ STATE OFFICE

AMC 419 2193

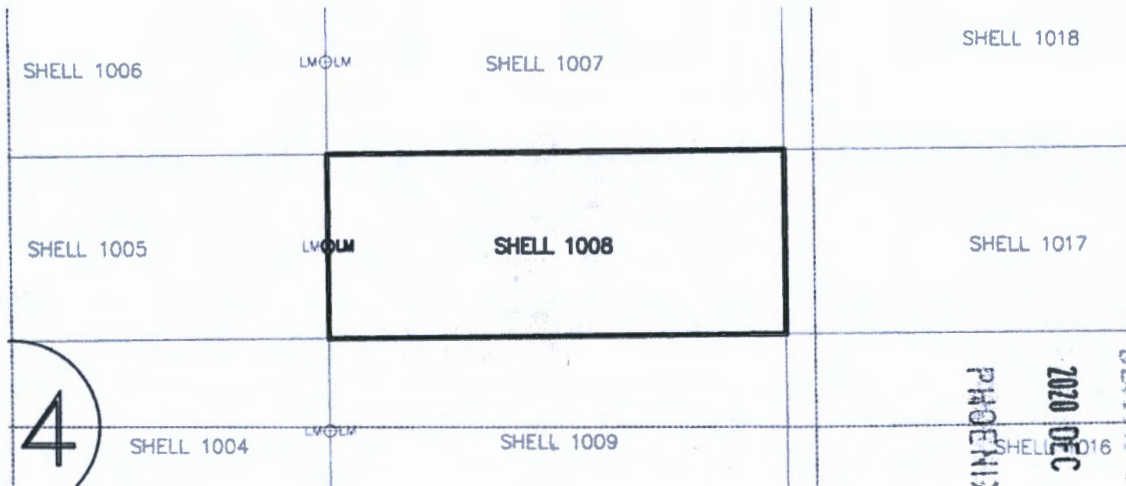
When Filed Return To:

SOUTH32 HERMOSA  
 2210 East Fort Lowell Road  
 TUCSON, AZ 85719

**MINING CLAIM MAP**

1" = 600'

LODE (X) PLACER ( )



AMC462193

RECEIVED  
 BLM AZ STATE OFFICE  
 2020 DEC 10 A 8:19  
 PHOENIX, ARIZONA

1. The above map depicts the SHELL-1008 mining claim, which is located in Unsurveyed Section(s) 14 Township 23S, Range 16E, Gila and Salt River Meridian, SANTA CRUZ County, Arizona.
2. The types of corner and end center monuments and location monument used are as follows: 2"X2"X5' WOOD POSTS WITH MARKED ALUMINUM TAGS, IN ROCK CAIRNS. All location monuments (LM) are offset 40 feet from the noted end center monument along the center line of the claim unless otherwise noted. The location monument has been placed outside patented ground.
3. The bearings in degrees between claim corners are: East/West lines run N 89°23' E and North/South lines run N 00°37' W , as depicted on the map or as stated on page 1 of this notice, and are surface distances. All ties to Claim monuments are in grid bearing and distance to reference monument.
4. All claims in this block are contiguous.

RECEIVED  
 BLM AZ STATE OFFICE  
 2020 NOV 23 M 4:19:01 M  
 accepted this date.  
 PHOENIX, ARIZONA



2020-07-05

Page 1 of 2

Requested By: Arizona Minerals

SUZANNE SAINZ, RECORDER

SANTA CRUZ COUNTY, ARIZONA

11-17-2020 09:00 AM Recording Fee \$30.00

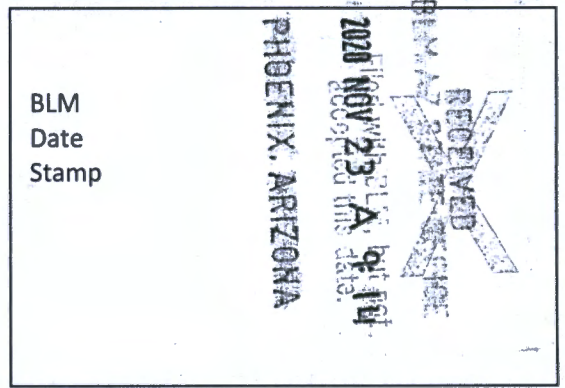
When Filed Return To:

SOUTH32 HERMOSA  
2210 East Fort Lowell Road  
TUCSON, AZ 85719

**LOCATION NOTICE FOR LODE MINING CLAIM**

NOTICE IS HEREBY GIVEN that the SHELL-1009 lode mining claim has been located

By: ARIZONA MINERALS, INC.  
2210 East Fort Lowell Road  
TUCSON, AZ 85719



The general course of this claim is EAST TO WEST and it is situated in the Harshaw and Patagonia Mining Districts, SANTA CRUZ County, Arizona. This claim is 1500 feet long and 600 feet wide constituting 300 feet on each side of the centerline.

This claim runs from the location monument on the centerline on which this location notice is posted approximately 40 feet in a(n) WESTERLY direction to the WEST end line and 1460 feet in a(n) EASTERLY direction to the EAST end line.

This claim is marked by six monuments, one at each corner and one at the center of each end line of the claim.

The location monument on which this notice is posted is situated within Unsurveyed Section 14, Township 23 SOUTH Range 16 EAST, from the Gila and Salt River Meridian, and this claim encompasses portions of the following quarter section (s), section (s), Township (s) and Range (s) NE, SE 1/4's OF UNSURVEYED SECTION 14, T. 23S, R. 16E, from the Gila and Salt River Meridian, Arizona.

The locality of this claim with reference to some natural object or permanent monument and additional information (if any) concerning its locality are as follows: THE NORTHEAST CORNER OF THE CLAIM IS LOCATED S16°43'W, 10,071.1 FEET FROM THE SOUTHWEST CORNER OF SECTION 6, T23S, R17E, FROM THE GILA AND SALT RIVER MERIDIAN, SANTA CRUZ COUNTY, AZ.

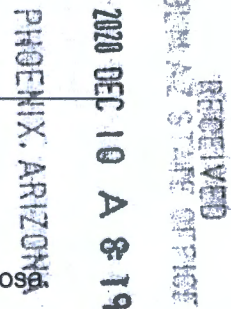
DATED AND POSTED on the ground this 7 day of NOV, 20 20.

WITNESS: Mark Kelly

Arizona Minerals Inc.

BY: RM & Stoll

Ronald E. Stoll  
of JLF2 Consulting, LLC  
1213 N. Torino Avenue  
Tucson, AZ 85712  
AS AGENT FOR South32 Hermosa



AM 11-21-20

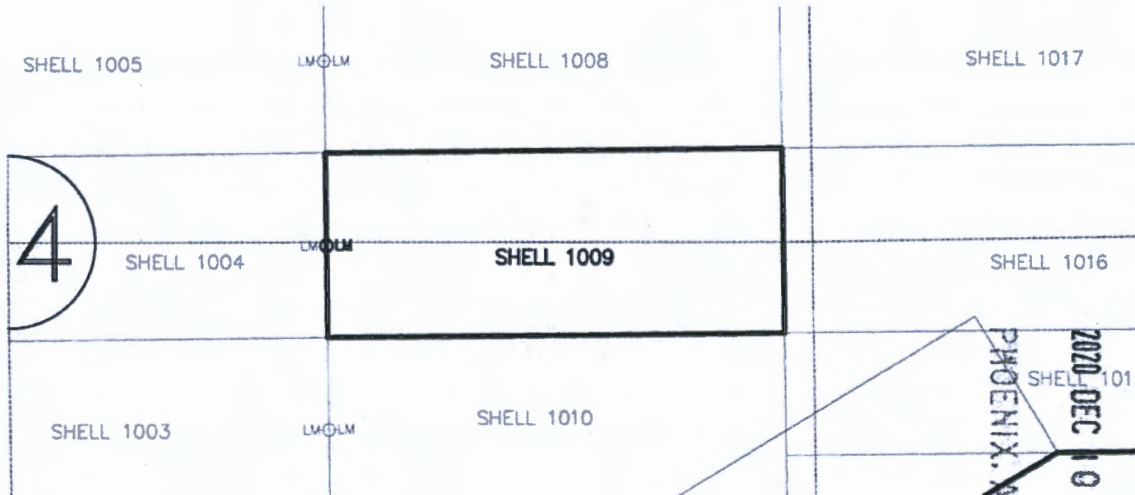
When Filed Return To:

SOUTH32 HERMOSA  
2210 East Fort Lowell Road  
TUCSON, AZ 85719

MINING CLAIM MAP

1" = 600'

LODE (X) PLACER ( )



AMC462194

RECEIVED  
BUREAU OF LAND MANAGEMENT  
2020 DEC 10 A 8:19  
PHOENIX, ARIZONA

1. The above map depicts the SHELL-1009 mining claim, which is located in Unsurveyed Section (s) 14-Township 23S, Range 16E, Gila and Salt River Meridian, SANTA CRUZ County, Arizona.
2. The types of corner and end center monuments and location monument used are as follows: 2"X2"X5' WOOD POSTS WITH MARKED ALUMINUM TAGS, IN ROCK CAIRNS. All location monuments (LM) are offset 40 feet from the noted end center monument along the center line of the claim unless otherwise noted. The location monument has been placed outside patented ground.
3. The bearings in degrees between claim corners are: East/West lines run N 89°23' E and North/South lines run N 00°37' W , as depicted on the map or as stated on page 1 of this notice, and are surface distances. All ties to Claim monuments are in grid bearing and distance to reference monument.
4. All claims in this block are contiguous.

RECEIVED  
BUREAU OF LAND MANAGEMENT  
2020 NOV 23 11:09:14  
PHOENIX, ARIZONA





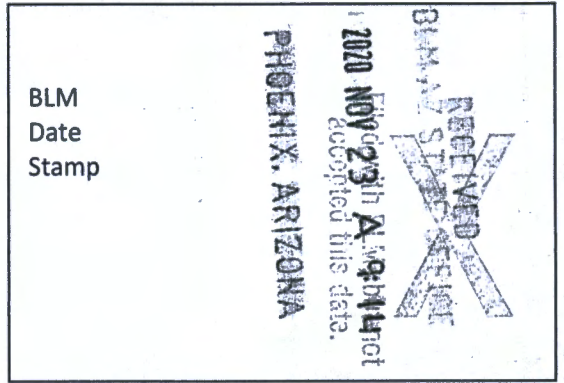
When Filed Return To:

SOUTH32 HERMOSA  
2210 East Fort Lowell Road  
TUCSON, AZ 85719

**LOCATION NOTICE FOR LODE MINING CLAIM**

NOTICE IS HEREBY GIVEN that the SHELL-1010 lode mining claim has been located

By: ARIZONA MINERALS, INC.  
2210 East Fort Lowell Road  
TUCSON, AZ 85719



The general course of this claim is EAST TO WEST and it is situated in the Harshaw and Patagonia Mining Districts, SANTA CRUZ County, Arizona. This claim is 1500 feet long and 600 feet wide constituting 300 feet on each side of the centerline.

This claim runs from the location monument on the centerline on which this location notice is posted approximately 40 feet in a(n) WESTERLY direction to the WEST end line and 1460 feet in a(n) EASTERLY direction to the EAST end line. This claim is marked by six monuments, one at each corner and one at the center of each end line of the claim.

The location monument on which this notice is posted is situated within Unsurveyed Section 14, Township 23 SOUTH, Range 16 EAST, from the Gila and Salt River Meridian, and this claim encompasses portions of the following quarter section (s), section (s), Township (s) and Range (s) SE 1/4 OF UNSURVEYED SECTION 14, T. 23S, R. 16E, from the Gila and Salt River Meridian, Arizona.

The locality of this claim with reference to some natural object or permanent monument and additional information (if any) concerning its locality are as follows: THE NORTHEAST CORNER OF THE CLAIM IS LOCATED S15°45'W, 10,645.3 FEET FROM THE SOUTHWEST CORNER OF SECTION 6, T23S, R17E, FROM THE GILA AND SALT RIVER MERIDIAN, SANTA CRUZ COUNTY, AZ.

DATED AND POSTED on the ground this 7 day of NOV, 20 20.

WITNESS: [Signature]

Arizona Minerals Inc.  
BY: [Signature]  
Ronald E. Stoll  
of JLF2 Consulting, LLC  
1213 N. Torino Avenue  
Tucson, AZ 85712  
AS AGENT FOR South32 Hermosa.

RECEIVED BLM-AZ STAMP OFFICE PHOENIX, ARIZONA 2020 DEC 10 A 8 19

AMC462195

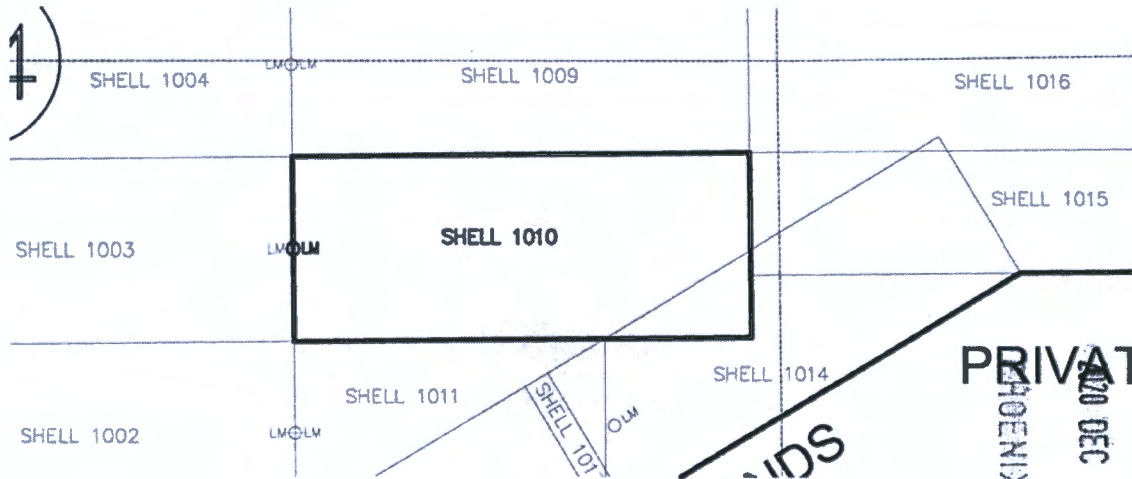
When Filed Return To:

SOUTH32 HERMOSA  
 2210 East Fort Lowell Road  
 TUCSON, AZ 85719

MINING CLAIM MAP

1" = 600'

LODE (X) PLACER ( )



AMC 462195

RECEIVED  
 BLM STATE OFFICE  
 PHOENIX, ARIZONA  
 DEC 10 A 8:19

1. The above map depicts the SHELL-1010 mining claim, which is located in Unsurveyed Section (s) 14 Township 23S, Range 16E, Gila and Salt River Meridian, SANTA CRUZ County, Arizona.
2. The types of corner and end center monuments and location monument used are as follows: 2"X2"X5' WOOD POSTS WITH MARKED ALUMINUM TAGS, IN ROCK CAIRNS. All location monuments (LM) are offset 40 feet from the noted end center monument along the center line of the claim unless otherwise noted. The location monument has been placed outside patented ground.
3. The bearings in degrees between claim corners are: East/West lines run N 89°23' E and North/South lines run N 00°37' W , as depicted on the map or as stated on page 1 of this notice, and are surface distances. All ties to Claim monuments are in grid bearing and distance to reference monument.
4. All claims in this block are contiguous.

RECEIVED  
 BLM STATE OFFICE  
 PHOENIX, ARIZONA  
 NOV 23 A 9:14  
 Filed with BLM, but not



2020-07-07

Page 1 of 2

Requested By: Arizona Minerals

SUZANNE SAINZ, RECORDER

SANTA CRUZ COUNTY, ARIZONA

11-17-2020 09:00 AM Recording Fee \$30.00

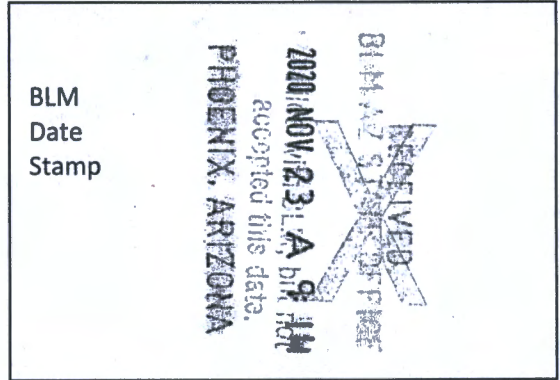
When Filed Return To:

SOUTH32 HERMOSA  
2210 East Fort Lowell Road  
TUCSON, AZ 85719

**LOCATION NOTICE FOR LODE MINING CLAIM**

NOTICE IS HEREBY GIVEN that the SHELL-1011 lode mining claim has been located

By: ARIZONA MINERALS, INC.  
2210 East Fort Lowell Road  
TUCSON, AZ 85719



The general course of this claim is EAST TO WEST and it is situated in the Harshaw and Patagonia Mining Districts, SANTA CRUZ County, Arizona. This claim is 1018 feet long and 600 feet wide constituting 300 feet on each side of the centerline.

This claim runs from the location monument on the centerline on which this location notice is posted approximately 40 feet in a(n) WESTERLY direction to the WEST end line and 978 feet in a(n) EASTERLY direction to the EAST end line.

This claim is marked by six monuments, one at each corner and one at the center of each end line of the claim.

The location monument on which this notice is posted is situated within Unsurveyed Section 14, Township 23 SOUTH, Range 16 EAST, from the Gila and Salt River Meridian, and this claim encompasses portions of the following quarter section (s), section (s), Township (s) and Range (s) SE 1/4 OF UNSURVEYED SECTION 14, T. 23S, R. 16E, from the Gila and Salt River Meridian, Arizona.

The locality of this claim with reference to some natural object or permanent monument and additional information (if any) concerning its locality are as follows: THE NORTHEAST CORNER OF THE CLAIM IS LOCATED S17°14'W, 11,360.6 FEET FROM THE SOUTHWEST CORNER OF SECTION 6, T23S, R17E, FROM THE GILA AND SALT RIVER MERIDIAN, SANTA CRUZ COUNTY, AZ.

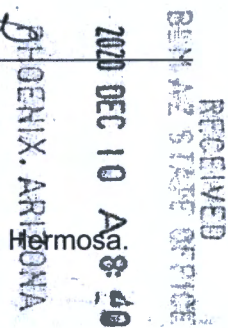
DATED AND POSTED on the ground this 7 day of Nov, 2020.

Arizona Minerals Inc.

WITNESS: [Signature]

BY: [Signature]

Ronald E. Stoll  
of JLF2 Consulting, LLC  
1213 N. Torino Avenue  
Tucson, AZ 85712  
AS AGENT FOR South32 Hermosa



AMC 462196

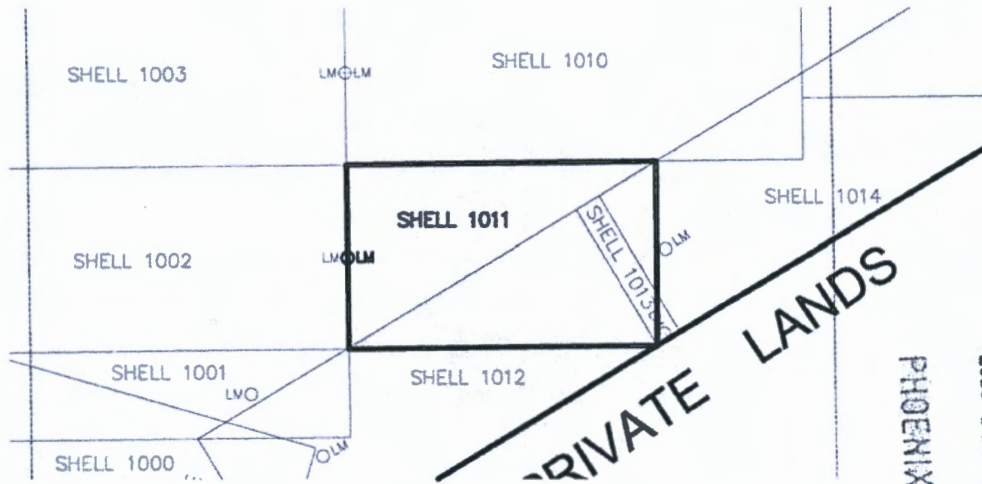
When Filed Return To:

SOUTH32 HERMOSA  
2210 East Fort Lowell Road  
TUCSON, AZ 85719

MINING CLAIM MAP

1" = 600'

LODE (X) PLACER ( )



AN462196

RECEIVED  
BLM AZ STATE OFFICE  
2020 DEC 10 A 8:40  
PHOENIX, ARIZONA

1. The above map depicts the SHELL-1011 mining claim, which is located in Unsurveyed Section (S) 14 Township 23S, Range 16E, Gila and Salt River Meridian, SANTA CRUZ County, Arizona.
2. The types of corner and end center monuments and location monument used are as follows: 2"X2"X5' WOOD POSTS WITH MARKED ALUMINUM TAGS, IN ROCK CAIRNS. All location monuments (LM) are offset 40 feet from the noted end center monument along the center line of the claim unless otherwise noted. The location monument has been placed outside patented ground.
3. The bearings in degrees between claim corners are: East/West lines run N 89°23' E and North/South lines run N 00°37' W , as depicted on the map or as stated on page 1 of this notice, and are surface distances. All ties to Claim monuments are in grid bearing and distance to reference monument.
4. All claims in this block are contiguous.

RECEIVED  
BLM AZ STATE OFFICE  
2020 NOV 23 1:40 PM  
accepted this data.  
PHOENIX, ARIZONA



2020-07-08

Page 1 of 2

Requested By: Arizona Minerals

SUZANNE SAINZ, RECORDER

SANTA CRUZ COUNTY, ARIZONA

11-17-2020 09:00 AM Recordings Fee \$30.00

When Filed Return To:

SOUTH32 HERMOSA  
2210 East Fort Lowell Road  
TUCSON, AZ 85719

**LOCATION NOTICE FOR LODE MINING CLAIM**

NOTICE IS HEREBY GIVEN that the SHELL-1012 lode mining claim has been located

By: ARIZONA MINERALS, INC.  
2210 East Fort Lowell Road  
TUCSON, AZ 85719



The general course of this claim is EAST TO WEST and it is situated in the Harshaw and Patagonia Mining Districts, SANTA CRUZ County, Arizona. This claim is 1448 feet long and 516 feet wide constituting 258 feet on each side of the centerline.

This claim runs from the location monument on the centerline on which this location notice is posted approximately 320 feet in a(n) WESTERLY direction to the WEST end line and 1128 feet in a(n) EASTERLY direction to the EAST end line. This claim is marked by six monuments, one at each corner and one at the center of each end line of the claim.

The location monument on which this notice is posted is situated within Unsurveyed Section 14, Township 23 SOUTH, Range 16 EAST, from the Gila and Salt River Meridian, and this claim encompasses portions of the following quarter section (s), section (s), Township (s) and Range (s) SE 1/4 OF UNSURVEYED SECTION 14, T. 23S, R. 16E, from the Gila and Salt River Meridian, Arizona.

The locality of this claim with reference to some natural object or permanent monument and additional information (if any) concerning its locality are as follows: THE NORTHEAST CORNER OF THE CLAIM IS LOCATED S18°14'W, 11,590.7 FEET FROM THE SOUTHWEST CORNER OF SECTION 6, T23S, R17E, FROM THE GILA AND SALT RIVER MERIDIAN, SANTA CRUZ COUNTY, AZ.

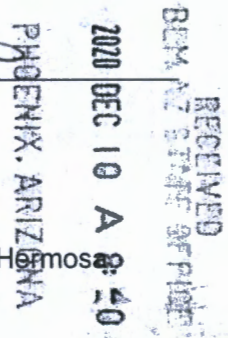
DATED AND POSTED on the ground this 7 day of NOV, 2020.

Arizona Minerals Inc.

WITNESS: \_\_\_\_\_

BY: \_\_\_\_\_

Ronald E. Stoll  
of JLF2 Consulting, LLC  
1213 N. Torino Avenue  
Tucson, AZ 85712  
AS AGENT FOR South32 Hermosa



AMC462197

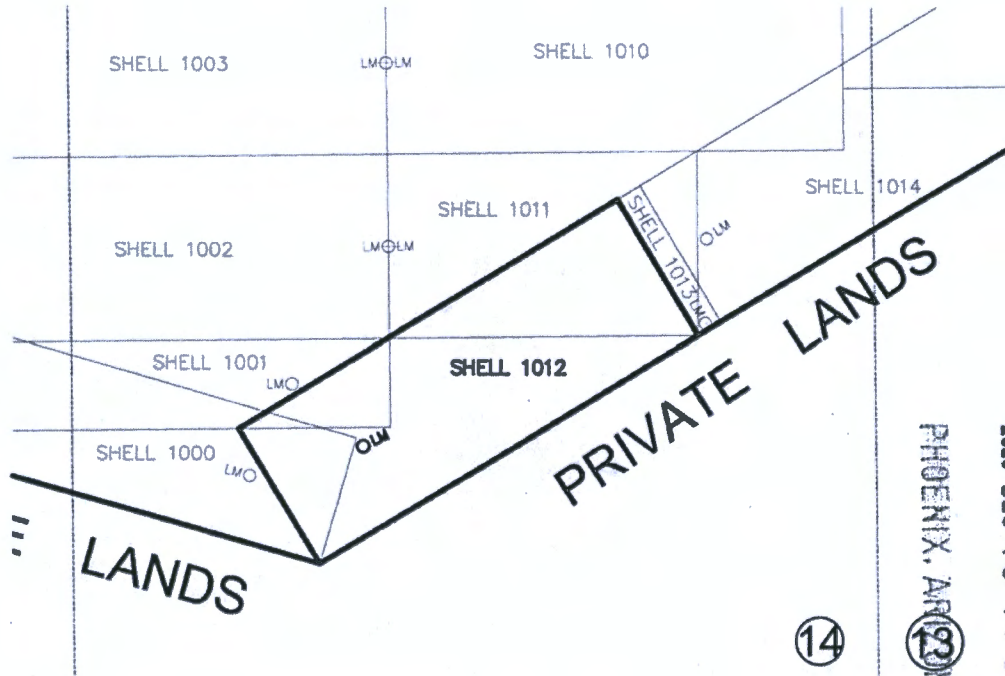
When Filed Return To:

SOUTH32 HERMOSA  
 2210 East Fort Lowell Road  
 TUCSON, AZ 85719

**MINING CLAIM MAP**

1" = 600'

LODE (X) PLACER ( )



ANC462197

RECEIVED  
 BLM AZ STATE OFFICE  
 2020 DEC 10 A 8:40  
 PHOENIX, ARIZONA

1. The above map depicts the SHELL-1012 mining claim, which is located in Unsurveyed Section (s) 14 Township 23S, Range 16E, Gila and Salt River Meridian, SANTA CRUZ County, Arizona.
2. The types of corner and end center monuments and location monument used are as follows: 2"X2"X5' WOOD POSTS WITH MARKED ALUMINUM TAGS, IN ROCK CAIRNS. All location monuments (LM) are offset 40 feet from the noted end center monument along the center line of the claim unless otherwise noted. The location monument has been placed outside patented ground.
3. The bearings in degrees between claim corners are: East/West lines run N 59°03' E and North/South lines run N 30°57' W , as depicted on the map or as stated on page 1 of this notice, and are surface distances. All ties to Claim monuments are in grid bearing and distance to reference monument.
4. All claims in this block are contiguous.

RECEIVED  
 BLM AZ STATE OFFICE  
 2020 NOV 23 A 9:14  
 accepted this data  
 in the field, but not  
 PHOENIX, ARIZONA

When Filed Return To:

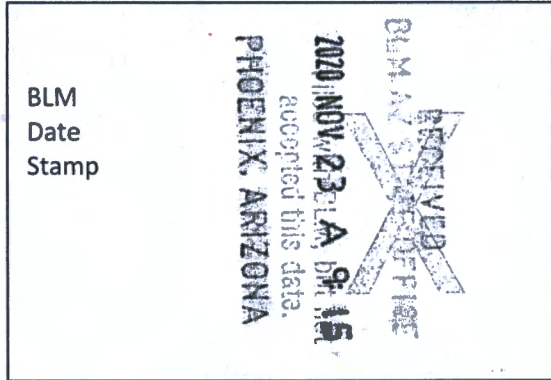


SOUTH32 HERMOSA  
2210 East Fort Lowell Road  
TUCSON, AZ 85719

**LOCATION NOTICE FOR LODE MINING CLAIM**

NOTICE IS HEREBY GIVEN that the SHELL-1013 lode mining claim has been located

By: ARIZONA MINERALS, INC.  
2210 East Fort Lowell Road  
TUCSON, AZ 85719



The general course of this claim is NORTH TO SOUTH and it is situated in the Harshaw and Patagonia Mining Districts, SANTA CRUZ County, Arizona. This claim is 516 feet long and 87 feet wide constituting 43.5 feet on each side of the centerline.

This claim runs from the location monument on the centerline on which this location notice is posted approximately 20 feet in a(n) SOUTHERLY direction to the SOUTH end line and 496 feet in a(n) NORTHERLY direction to the NORTH end line. This claim is marked by six monuments, one at each corner and one at the center of each end line of the claim.

The location monument on which this notice is posted is situated within Unsurveyed Section 14, Township 23 SOUTH, Range 16 EAST, from the Gila and Salt River Meridian, and this claim encompasses portions of the following quarter section (s), section (s), Township (s) and Range (s) SE 1/4 OF UNSURVEYED SECTION 14, T. 23S, R. 16E, from the Gila and Salt River Meridian, Arizona.

The locality of this claim with reference to some natural object or permanent monument and additional information (if any) concerning its locality are as follows: THE NORTHEAST CORNER OF THE CLAIM IS LOCATED S17°57'W, 11,525.1 FEET FROM THE SOUTHWEST CORNER OF SECTION 6, T23S, R17E, FROM THE GILA AND SALT RIVER MERIDIAN, SANTA CRUZ COUNTY, AZ.

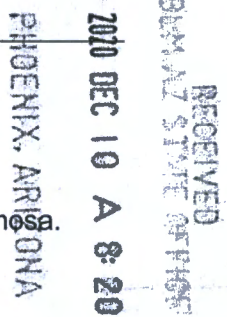
DATED AND POSTED on the ground this 7 day of Nov, 2020.

Arizona Minerals Inc.

WITNESS: [Signature]

BY: [Signature]

Ronald E. Stoll  
of JLF2 Consulting, LLC  
1213 N. Torino Avenue  
Tucson, AZ 85712  
AS AGENT FOR South32 Hermosa.



AMC462198

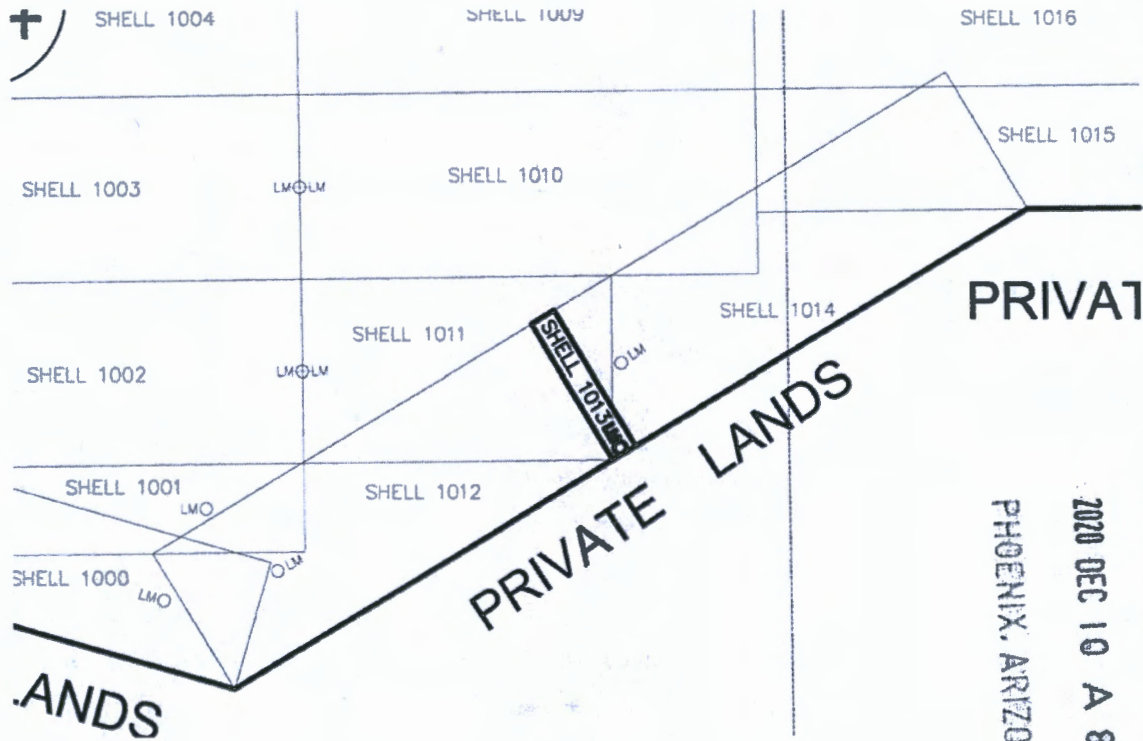
When Filed Return To:

SOUTH32 HERMOSA  
 2210 East Fort Lowell Road  
 TUCSON, AZ 85719

**MINING CLAIM MAP**

1" = 600'

LODE (X) PLACER ( )



ANCL 62198

RECEIVED  
 BENJAMIN STAFF OFFICE  
 2020 DEC 10 A 8:20  
 PHOENIX, ARIZONA

1. The above map depicts the SHELL-1013 mining claim, which is located in Unsurveyed Section (14) Township 23S, Range 16E, Gila and Salt River Meridian, SANTA CRUZ County, Arizona.
2. The types of corner and end center monuments and location monument used are as follows: 2"X2"X5' WOOD POSTS WITH MARKED ALUMINUM TAGS, IN ROCK CAIRNS. All location monuments (LM) are offset 40 feet from the noted end center monument along the center line of the claim unless otherwise noted. The location monument has been placed outside patented ground.
3. The bearings in degrees between claim corners are: East/West lines run N 59°03' E and North/South lines run N 30°57' W, as depicted on the map or as stated on page 1 of this notice, and are surface distances. All ties to Claim monuments are in grid bearing and distance to reference monument.
4. All claims in this block are contiguous.

RECEIVED  
 BENJAMIN STAFF OFFICE  
 2020 NOV 23, AM 9:15  
 accepted this date.  
 PHOENIX, ARIZONA





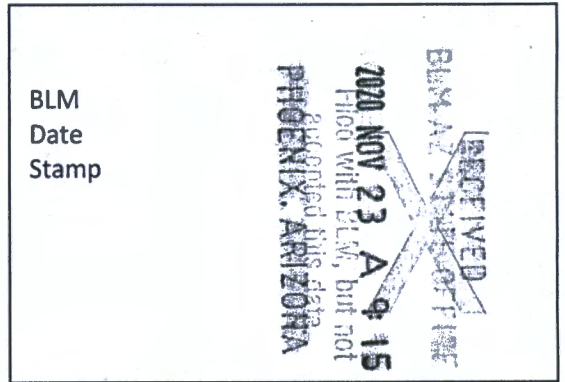
When Filed Return To:

SOUTH32 HERMOSA  
2210 East Fort Lowell Road  
TUCSON, AZ 85719

**LOCATION NOTICE FOR LODE MINING CLAIM**

NOTICE IS HEREBY GIVEN that the SHELL-1014 lode mining claim has been located

By: ARIZONA MINERALS, INC.  
2210 East Fort Lowell Road  
TUCSON, AZ 85719



The general course of this claim is EAST TO WEST and it is situated in the Harshaw and Patagonia Mining Districts, SANTA CRUZ County, Arizona. This claim is 1500 feet long and 516 feet wide constituting 258 feet on each side of the centerline.

This claim runs from the location monument on the centerline on which this location notice is posted approximately 100 feet in a(n) WESTERLY direction to the WEST end line and 1400 feet in a(n) EASTERLY direction to the EAST end line. This claim is marked by six monuments, one at each corner and one at the center of each end line of the claim.

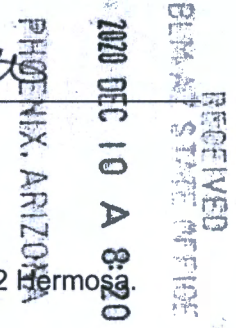
The location monument on which this notice is posted is situated within Unsurveyed Section 14, Township 23 SOUTH, Range 16 EAST, from the Gila and Salt River Meridian, and this claim encompasses portions of the following quarter section (s), section (s), Township (s) and Range (s) SE 1/4 OF UNSURVEYED SECTION 14, SW 1/4 OF UNSURVEYED SECTION 13, T. 23S, R. 16E, from the Gila and Salt River Meridian, Arizona.

The locality of this claim with reference to some natural object or permanent monument and additional information (if any) concerning its locality are as follows: THE NORTHEAST CORNER OF THE CLAIM IS LOCATED S12°32'W, 10,441.2 FEET FROM THE SOUTHWEST CORNER OF SECTION 6, T23S, R17E, FROM THE GILA AND SALT RIVER MERIDIAN, SANTA CRUZ COUNTY, AZ.

DATED AND POSTED on the ground this 7 day of NOV, 2020.

WITNESS: Mal Stoll

Arizona Minerals Inc.  
BY: RM & Stoll  
Ronald E. Stoll  
of JLF2 Consulting, LLC  
1213 N. Torino Avenue  
Tucson, AZ 85712  
AS AGENT FOR South32 Hermos



AHC462199

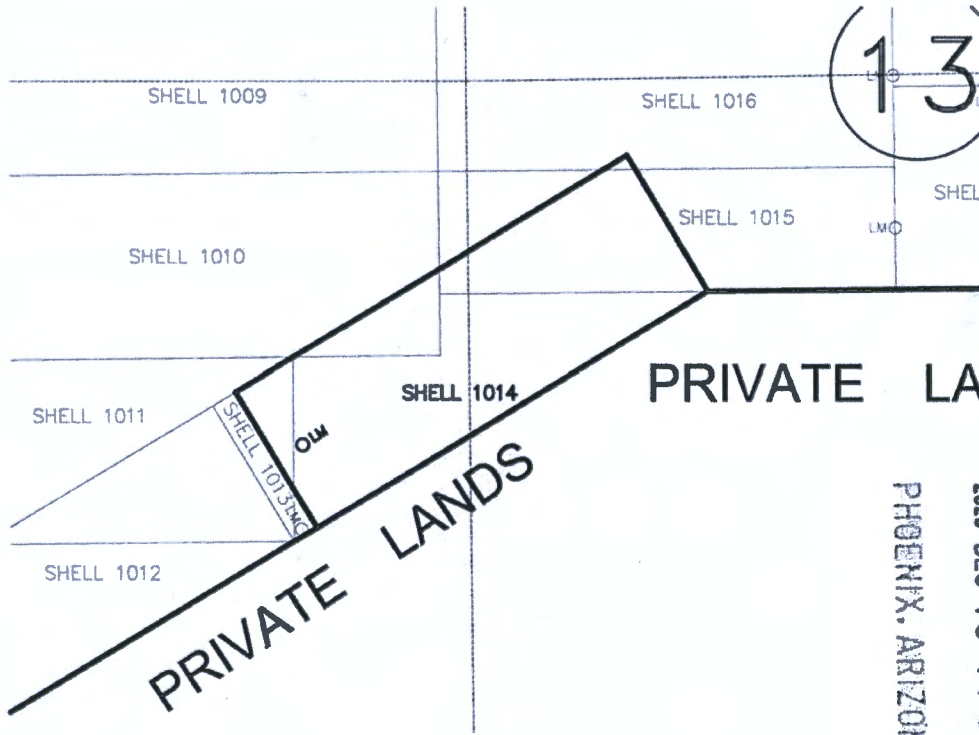
When Filed Return To:

SOUTH32 HERMOSA  
2210 East Fort Lowell Road  
TUCSON, AZ 85719

MINING CLAIM MAP

1" = 600'

LODE (X) PLACER ( )



ARCh 62199

RECEIVED  
 BLM AZ STATE OFFICE  
 2020 DEC 10 A 8:20  
 PHOENIX, ARIZONA

1. The above map depicts the SHELL-1014 mining claim, which is located in Unsurveyed Section (s) 14 Township 23S, Range 16E, Gila and Salt River Meridian, SANTA CRUZ County, Arizona.
2. The types of corner and end center monuments and location monument used are as follows: 2"X2"X5' WOOD POSTS WITH MARKED ALUMINUM TAGS, IN ROCK CAIRNS. All location monuments (LM) are offset 40 feet from the noted end center monument along the center line of the claim unless otherwise noted. The location monument has been placed outside patented ground.
3. The bearings in degrees between claim corners are: East/West lines run N 59°03' E and North/South lines run N 30°57' W , as depicted on the map or as stated on page 1 of this notice, and are surface distances. All ties to Claim monuments are in grid bearing and distance to reference monument.
4. All claims in this block are contiguous.

RECEIVED  
 BLM AZ STATE OFFICE  
 2020 NOV 23, AM 9:15  
 accepted this date.  
 PHOENIX, ARIZONA



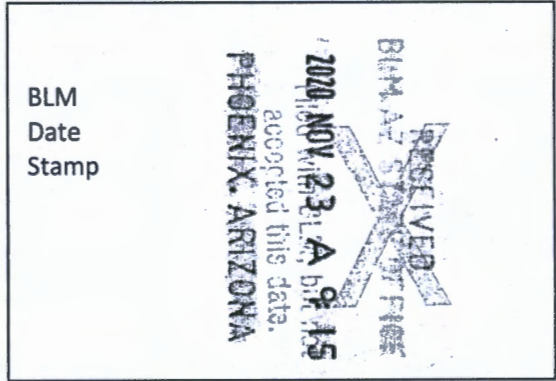
When Filed Return To:

SOUTH32 HERMOSA  
2210 East Fort Lowell Road  
TUCSON, AZ 85719

**LOCATION NOTICE FOR LODE MINING CLAIM**

NOTICE IS HEREBY GIVEN that the SHELL-1015 lode mining claim has been located

By: ARIZONA MINERALS, INC.  
2210 East Fort Lowell Road  
TUCSON, AZ 85719



The general course of this claim is WEST TO EAST and it is situated in the Harshaw and Patagonia Mining Districts, SANTA CRUZ County, Arizona. This claim is 1500 feet long and 399 feet wide constituting 199.5 feet on each side of the centerline.

This claim runs from the location monument on the centerline on which this location notice is posted approximately 40 feet in a(n) EASTERLY direction to the EAST end line and 1460 feet in a(n) WESTERLY direction to the WEST end line.

This claim is marked by six monuments, one at each corner and one at the center of each end line of the claim.

The location monument on which this notice is posted is situated within Unsurveyed Section 13, Township 23 SOUTH, Range 16 EAST, from the Gila and Salt River Meridian, and this claim encompasses portions of the following quarter section (s), section (s), Township (s) and Range (s) SW 1/4 OF UNSURVEYED SECTION 13, SE 1/4 OF UNSURVEYED SECTION 14, T. 23S, R. 16E, from the Gila and Salt River Meridian, Arizona.

The locality of this claim with reference to some natural object or permanent monument and additional information (if any) concerning its locality are as follows: THE NORTHEAST CORNER OF THE CLAIM IS LOCATED S07°44'W, 10,323.6 FEET FROM THE SOUTHWEST CORNER OF SECTION 6, T. 23S, R. 17E, FROM THE GILA AND SALT RIVER MERIDIAN, SANTA CRUZ COUNTY, AZ.

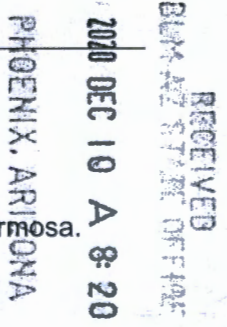
DATED AND POSTED on the ground this 7 day of Nov, 2020.

Arizona Minerals Inc.

WITNESS: [Signature]

BY: [Signature]

Ronald E. Stoll  
of JLF2 Consulting, LLC  
1213 N. Torino Avenue  
Tucson, AZ 85712  
AS AGENT FOR South32 Hermosa.



AMC 462200

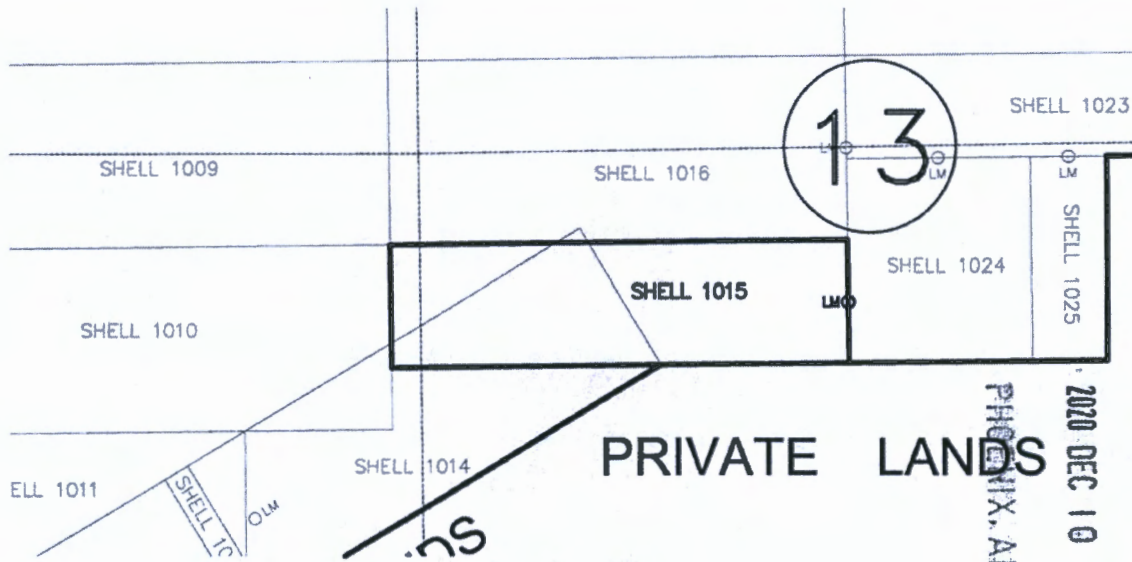
When Filed Return To:

SOUTH32 HERMOSA  
2210 East Fort Lowell Road  
TUCSON, AZ 85719

MINING CLAIM MAP

1" = 600'

LODE (X) PLACER ( )



AMC 462200

RECEIVED  
BUREAU OF LAND MANAGEMENT  
2020 DEC 10 A 8:20  
PHOENIX, ARIZONA

1. The above map depicts the SHELL-1015 mining claim, which is located in Unsurveyed Section (s) 13 & 14 Township 23S, Range 16E, Gila and Salt River Meridian, SANTA CRUZ County, Arizona.
2. The types of corner and end center monuments and location monument used are as follows: 2"X2"X5' WOOD POSTS WITH MARKED ALUMINUM TAGS, IN ROCK CAIRNS. All location monuments (LM) are offset 40 feet from the noted end center monument along the center line of the claim unless otherwise noted. The location monument has been placed outside patented ground.
3. The bearings in degrees between claim corners are: East/West lines run N 89°23' E and North/South lines run N 00°37' W, as depicted on the map or as stated on page 1 of this notice, and are surface distances. All ties to Claim monuments are in grid bearing and distance to reference monument.
4. All claims in this block are contiguous.

RECEIVED  
BUREAU OF LAND MANAGEMENT  
2020 NOV 23 10:15 AM  
accepted this data.  
PHOENIX, ARIZONA



When Filed Return To:

SOUTH32 HERMOSA  
2210 East Fort Lowell Road  
TUCSON, AZ 85719

**LOCATION NOTICE FOR LODE MINING CLAIM**

NOTICE IS HEREBY GIVEN that the SHELL-1016 lode mining claim has been located

By: ARIZONA MINERALS, INC.  
2210 East Fort Lowell Road  
TUCSON, AZ 85719



The general course of this claim is WEST TO EAST and it is situated in the Harshaw and Patagonia Mining Districts, SANTA CRUZ County, Arizona. This claim is 1500 feet long and 600 feet wide constituting 300 feet on each side of the centerline.

This claim runs from the location monument on the centerline on which this location notice is posted approximately 40 feet in a(n) EASTERLY direction to the EAST end line and 1460 feet in a(n) WESTERLY direction to the WEST end line.

This claim is marked by six monuments, one at each corner and one at the center of each end line of the claim.

The location monument on which this notice is posted is situated within Unsurveyed Section 13, Township 23 SOUTH, Range 16 EAST, from the Gila and Salt River Meridian, and this claim encompasses portions of the following quarter section (s), section (s), Township (s) and Range (s) NW, SW 1/4's OF UNSURVEYED SECTION 13, NE, SE 1/4's OF UNSURVEYED SECTION 14, T. 23S, R. 16E, from the Gila and Salt River Meridian, Arizona.

The locality of this claim with reference to some natural object or permanent monument and additional information (if any) concerning its locality are as follows: THE NORTHEAST CORNER OF THE CLAIM IS LOCATED S08°15'W, 9,730.3 FEET FROM THE SOUTHWEST CORNER OF SECTION 6, T. 23S, R. 17E, FROM THE GILA AND SALT RIVER MERIDIAN, SANTA CRUZ COUNTY, AZ.

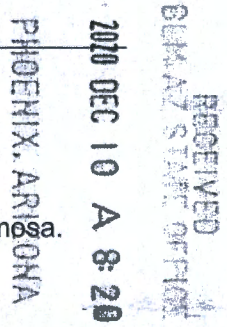
DATED AND POSTED on the ground this 7 day of Nov, 2020.

Arizona Minerals Inc.

WITNESS: Mh [Signature]

BY: RM & Stoll

Ronald E. Stoll  
of JLF2 Consulting, LLC  
1213 N. Torino Avenue  
Tucson, AZ 85712  
AS AGENT FOR South32 Hermosa.



AMC 452201

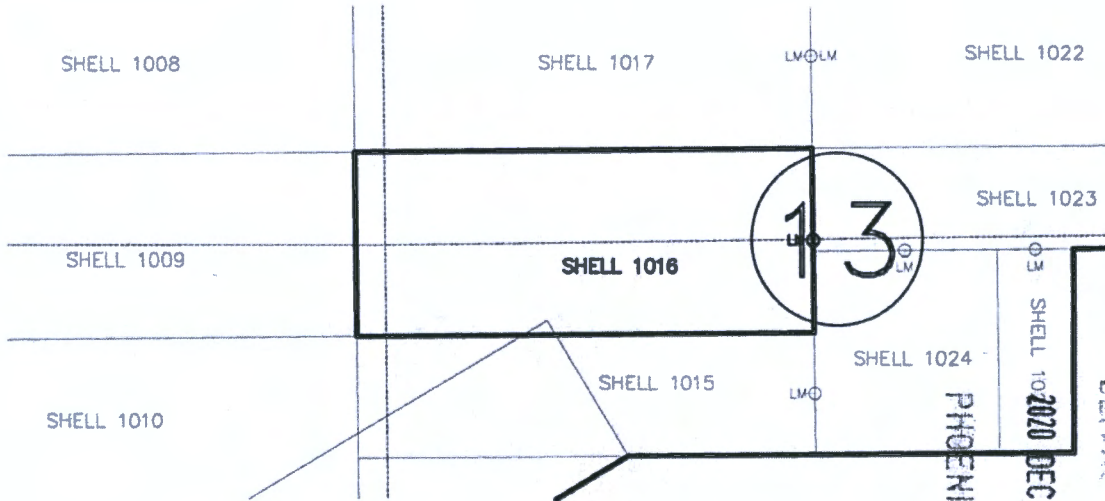
When Filed Return To:

SOUTH32 HERMOSA  
2210 East Fort Lowell Road  
TUCSON, AZ 85719

MINING CLAIM MAP

1" = 600'

LODE (X) PLACER ( )



AMC462201

1. The above map depicts the SHELL-1016 mining claim, which is located in Unsurveyed Section (s) 13 & 14 Township 23S, Range 16E, Gila and Salt River Meridian, SANTA CRUZ County, Arizona.
2. The types of corner and end center monuments and location monument used are as follows: 2"X2"X5' WOOD POSTS WITH MARKED ALUMINUM TAGS, IN ROCK CAIRNS. All location monuments (LM) are offset 40 feet from the noted end center monument along the center line of the claim unless otherwise noted. The location monument has been placed outside patented ground.
3. The bearings in degrees between claim corners are: East/West lines run N 89°23' E and North/South lines run N 00°37' W , as depicted on the map or as stated on page 1 of this notice, and are surface distances. All ties to Claim monuments are in grid bearing and distance to reference monument.
4. All claims in this block are contiguous.

RECEIVED  
BUREAU OF LAND MANAGEMENT  
PHOENIX, ARIZONA  
NOV 23 9 15 AM '20  
I have verified this data, but not the original file.  
PHOENIX, ARIZONA



2020-07-3

Page 1 of 2

Requested By: Arizona Minerals

SUZANNE SAINZ, RECORDER

SANTA CRUZ COUNTY, ARIZONA

11-17-2020 09:00 AM Recording Fee \$30.00

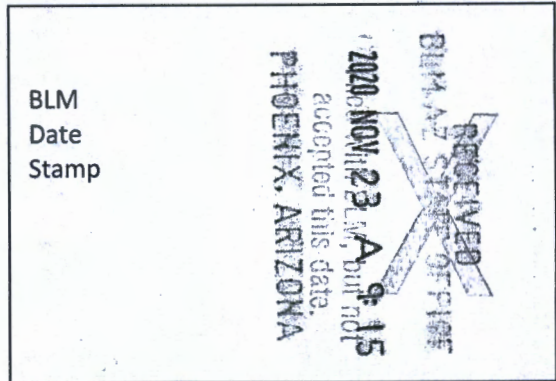
When Filed Return To:

SOUTH32 HERMOSA  
2210 East Fort Lowell Road  
TUCSON, AZ 85719

**LOCATION NOTICE FOR LODE MINING CLAIM**

NOTICE IS HEREBY GIVEN that the SHELL-1017 lode mining claim has been located

By: ARIZONA MINERALS, INC.  
2210 East Fort Lowell Road  
TUCSON, AZ 85719



The general course of this claim is WEST TO EAST and it is situated in the Harshaw and Patagonia Mining Districts, SANTA CRUZ County, Arizona. This claim is 1500 feet long and 600 feet wide constituting 300 feet on each side of the centerline.

This claim runs from the location monument on the centerline on which this location notice is posted approximately 40 feet in a(n) EASTERLY direction to the EAST end line and 1460 feet in a(n) WESTERLY direction to the WEST end line. This claim is marked by six monuments, one at each corner and one at the center of each end line of the claim.

The location monument on which this notice is posted is situated within Unsurveyed Section 13, Township 23 SOUTH, Range 16 EAST, from the Gila and Salt River Meridian, and this claim encompasses portions of the following quarter section (s), section (s), Township (s) and Range (s) NW 1/4 OF UNSURVEYED SECTION 13, NE 1/4 OF UNSURVEYED SECTION 14, T. 23S, R. 16E, from the Gila and Salt River Meridian, Arizona.

The locality of this claim with reference to some natural object or permanent monument and additional information (if any) concerning its locality are as follows: THE NORTHEAST CORNER OF THE CLAIM IS LOCATED S08°50'W, 9,138.0 FEET FROM THE SOUTHWEST CORNER OF SECTION 6, T. 23S, R. 17E, FROM THE GILA AND SALT RIVER MERIDIAN, SANTA CRUZ COUNTY, AZ.

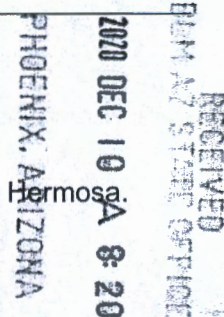
DATED AND POSTED on the ground this 7 day of NOV, 2020.

Arizona Minerals Inc.

WITNESS: Mark Kelly

BY: RM & Stoll

Ronald E. Stoll  
of JLF2 Consulting, LLC  
1213 N. Torino Avenue  
Tucson, AZ 85712  
AS AGENT FOR South32 Hermosa



AMC 462902

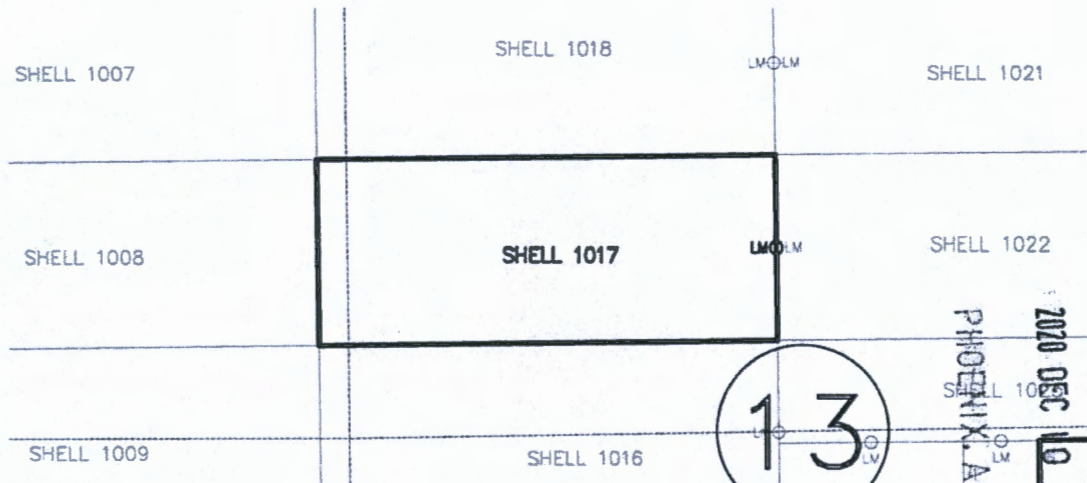
When Filed Return To:

SOUTH32 HERMOSA  
2210 East Fort Lowell Road  
TUCSON, AZ 85719

MINING CLAIM MAP

1" = 600'

LODE (X) PLACER ( )



AMC462202

RECEIVED  
BUREAU OF LAND MANAGEMENT  
2020 DEC 10 A 8:20  
PHOENIX, ARIZONA

1. The above map depicts the SHELL-1017 mining claim, which is located in Unsurveyed Section (s) 13 & 14 Township 23S, Range 16E, Gila and Salt River Meridian, SANTA CRUZ County, Arizona.
2. The types of corner and end center monuments and location monument used are as follows: 2"X2"X5' WOOD POSTS WITH MARKED ALUMINUM TAGS, IN ROCK CAIRNS. All location monuments (LM) are offset 40 feet from the noted end center monument along the center line of the claim unless otherwise noted. The location monument has been placed outside patented ground.
3. The bearings in degrees between claim corners are: East/West lines run N 89°23' E and North/South lines run N 00°37' W , as depicted on the map or as stated on page 1 of this notice, and are surface distances. All ties to Claim monuments are in grid bearing and distance to reference monument.
4. All claims in this block are contiguous.

RECEIVED  
BUREAU OF LAND MANAGEMENT  
2020/NOV/23  
accepted this date.  
PHOENIX, ARIZONA



When Filed Return To:

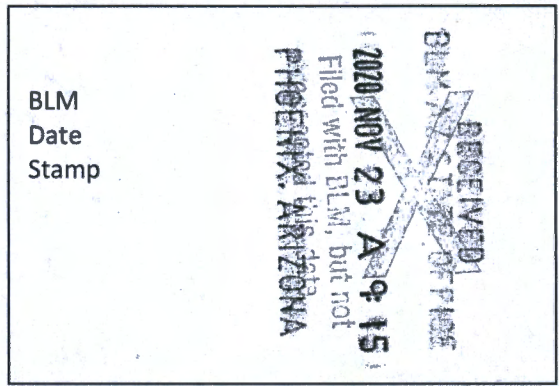


SOUTH32 HERMOSA  
2210 East Fort Lowell Road  
TUCSON, AZ 85719

**LOCATION NOTICE FOR LODGE MINING CLAIM**

NOTICE IS HEREBY GIVEN that the SHELL-1018 lode mining claim has been located

By: ARIZONA MINERALS, INC.  
2210 East Fort Lowell Road  
TUCSON, AZ 85719



The general course of this claim is WEST TO EAST and it is situated in the Harshaw and Patagonia Mining Districts, SANTA CRUZ County, Arizona. This claim is 1500 feet long and 600 feet wide constituting 300 feet on each side of the centerline.

This claim runs from the location monument on the centerline on which this location notice is posted approximately 40 feet in a(n) EASTERLY direction to the EAST end line and 1460 feet in a(n) WESTERLY direction to the WEST end line. This claim is marked by six monuments, one at each corner and one at the center of each end line of the claim.

The location monument on which this notice is posted is situated within Unsurveyed Section 13, Township 23 SOUTH, Range 16 EAST, from the Gila and Salt River Meridian, and this claim encompasses portions of the following quarter section (s), section (s), Township (s) and Range (s) NW 1/4 OF UNSURVEYED SECTION 13, NE 1/4 OF UNSURVEYED SECTION 14, T. 23S, R. 16E, from the Gila and Salt River Meridian, Arizona.

The locality of this claim with reference to some natural object or permanent monument and additional information (if any) concerning its locality are as follows: THE NORTHEAST CORNER OF THE CLAIM IS LOCATED S09°29'W, 8,546.7 FEET FROM THE SOUTHWEST CORNER OF SECTION 6, T. 23S, R. 17E, FROM THE GILA AND SALT RIVER MERIDIAN, SANTA CRUZ COUNTY, AZ.

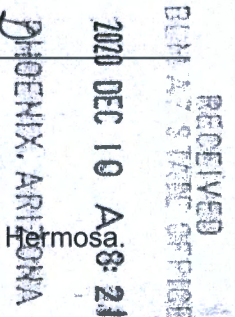
DATED AND POSTED on the ground this 7 day of Nov, 2020.

Arizona Minerals Inc.

WITNESS: [Signature]

BY: [Signature]

Ronald E. Stoll  
of JLF2 Consulting, LLC  
1213 N. Torino Avenue  
Tucson, AZ 85712  
AS AGENT FOR South32 Hermos



AMC 462703

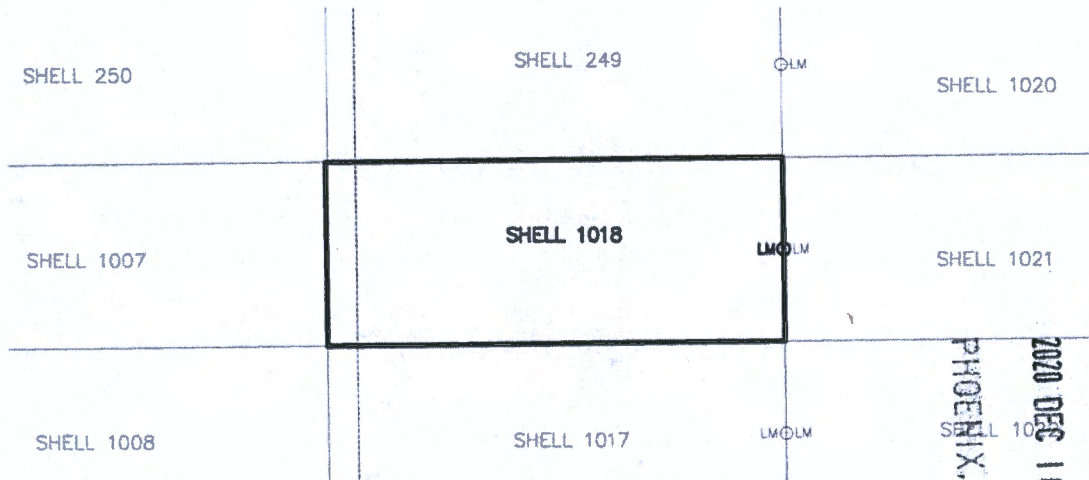
When Filed Return To:

SOUTH32 HERMOSA  
2210 East Fort Lowell Road  
TUCSON, AZ 85719

MINING CLAIM MAP

1" = 600'

LODE (X) PLACER ( )



AMC462203

RECEIVED  
BLM AZ STATE OFFICE  
2020 DEC 10 A 8:21  
PHOENIX, ARIZONA

1. The above map depicts the SHELL-1018 mining claim, which is located in Unsurveyed Section (s) 13 & 14 Township 23S, Range 16E, Gila and Salt River Meridian, SANTA CRUZ County, Arizona.
2. The types of corner and end center monuments and location monument used are as follows: 2"X2"X5' WOOD POSTS WITH MARKED ALUMINUM TAGS, IN ROCK CAIRNS. All location monuments (LM) are offset 40 feet from the noted end center monument along the center line of the claim unless otherwise noted. The location monument has been placed outside patented ground.
3. The bearings in degrees between claim corners are: East/West lines run N 89°23' E and North/South lines run N 00°37' W, as depicted on the map or as stated on page 1 of this notice, and are surface distances. All ties to Claim monuments are in grid bearing and distance to reference monument.
4. All claims in this block are contiguous.

RECEIVED  
BLM AZ STATE OFFICE  
2020 NOV 23 A 9:15  
accepted this date,  
PHOENIX, ARIZONA



2020-07-16

Page 1 of 2

Requested By: Arizona Minerals

SUZANNE SAINZ, RECORDER

SANTA CRUZ COUNTY, ARIZONA

11-17-2020 09:00 AM Recording Fee \$30.00

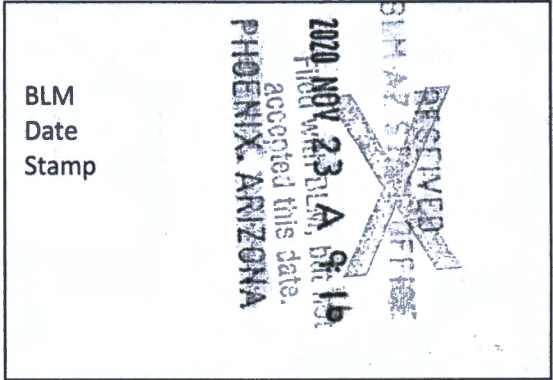
When Filed Return To:

SOUTH32 HERMOSA  
2210 East Fort Lowell Road  
TUCSON, AZ 85719

**LOCATION NOTICE FOR LODE MINING CLAIM**

NOTICE IS HEREBY GIVEN that the SHELL-1019 lode mining claim has been located

By: ARIZONA MINERALS, INC.  
2210 East Fort Lowell Road  
TUCSON, AZ 85719



The general course of this claim is EAST TO WEST and it is situated in the Harshaw and Patagonia Mining Districts, SANTA CRUZ County, Arizona. This claim is 1500 feet long and 600 feet wide constituting 300 feet on each side of the centerline.

This claim runs from the location monument on the centerline on which this location notice is posted approximately 40 feet in a(n) WESTERLY direction to the WEST end line and 1460 feet in a(n) EASTERLY direction to the EAST end line. This claim is marked by six monuments, one at each corner and one at the center of each end line of the claim.

The location monument on which this notice is posted is situated within Unsurveyed Section 12, Township 23 SOUTH, Range 16 EAST, from the Gila and Salt River Meridian, and this claim encompasses portions of the following quarter section (s), section (s), Township (s) and Range (s) SE, SW 1/4's OF UNSURVEYED SECTION 12, T. 23S, R. 16E, & NW 1/4 OF SECTION 18, T. 23S, R. 17E, from the Gila and Salt River Meridian, Arizona.

The locality of this claim with reference to some natural object or permanent monument and additional information (if any) concerning its locality are as follows: THE NORTHEAST CORNER OF THE CLAIM IS LOCATED S00°38'E, 5,414.2 FEET FROM THE SOUTHWEST CORNER OF SECTION 6, T. 23S, R. 17E, FROM THE GILA AND SALT RIVER MERIDIAN, SANTA CRUZ COUNTY, AZ.

DATED AND POSTED on the ground this 7 day of NOV, 2020.

Arizona Minerals Inc.

WITNESS: [Signature]

BY: [Signature]

Ronald E. Stoll  
of JLF2 Consulting, LLC  
1213 N. Torino Avenue  
Tucson, AZ 85712  
AS AGENT FOR South32 Hermosa

RECEIVED  
BLM-AZ STAFF OFFICE  
2020 DEC 10 A 8:21  
PHOENIX, ARIZONA

AMC 62204

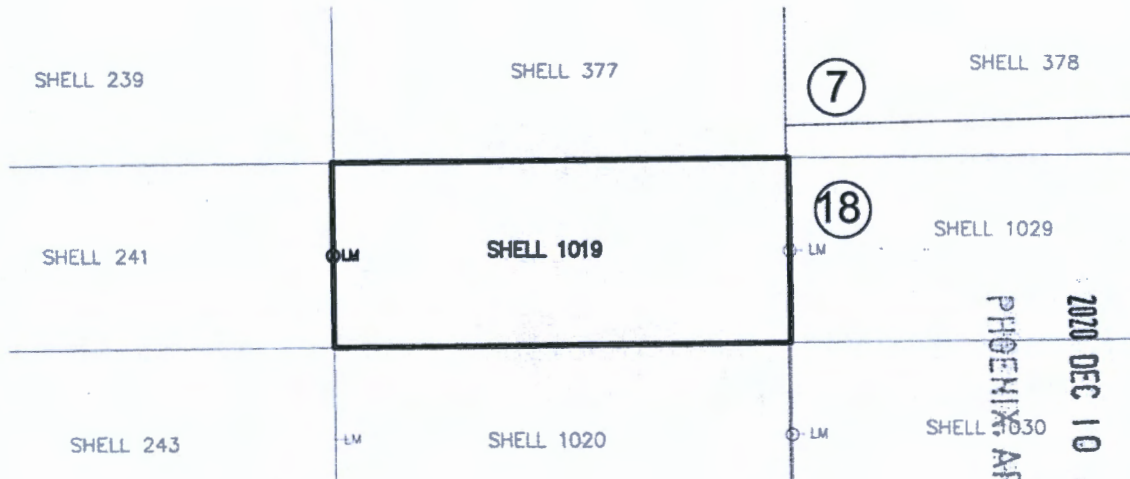
When Filed Return To:

SOUTH32 HERMOSA  
2210 East Fort Lowell Road  
TUCSON, AZ 85719

MINING CLAIM MAP

1" = 600'

LODE (X) PLACER ( )



ANC 462204

1. The above map depicts the SHELL-1019 mining claim, which is located in Unsurveyed Section (s) 12 Township 23S, Range 16E, and Section (s) 18 Township 23S, Range 17E, Gila and Salt River Meridian, SANTA CRUZ County, Arizona.
2. The types of corner and end center monuments and location monument used are as follows: 2"X2"X5' WOOD POSTS WITH MARKED ALUMINUM TAGS, IN ROCK CAIRNS. All location monuments (LM) are offset 40 feet from the noted end center monument along the center line of the claim unless otherwise noted. The location monument has been placed outside patented ground.
3. The bearings in degrees between claim corners are: East/West lines run N 89°23' E and North/South lines run N 00°37' W , as depicted on the map or as stated on page 1 of this notice, and are surface distances. All ties to Claim monuments are in grid bearing and distance to reference monument.
4. All claims in this block are contiguous.

RECEIVED  
BUREAU OF LAND MANAGEMENT  
PHOENIX, ARIZONA  
2020 NOV 23 A 9:16  
Filed with BLM, but not  
this date

When Filed Return To:

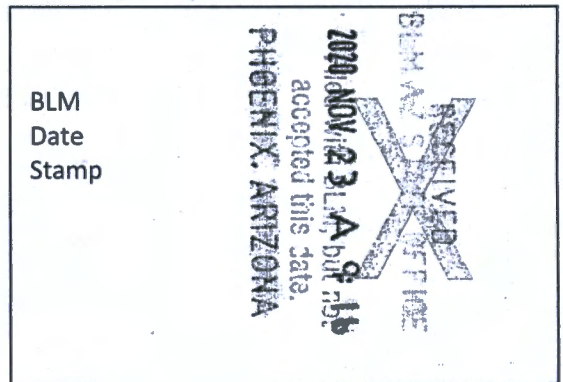
SOUTH32 HERMOSA  
2210 East Fort Lowell Road  
TUCSON, AZ 85719



**LOCATION NOTICE FOR LODE MINING CLAIM**

NOTICE IS HEREBY GIVEN that the SHELL-1020 lode mining claim has been located

By: ARIZONA MINERALS, INC.  
2210 East Fort Lowell Road  
TUCSON, AZ 85719



The general course of this claim is EAST TO WEST and it is situated in the Harshaw and Patagonia Mining Districts, SANTA CRUZ County, Arizona. This claim is 1500 feet long and 600 feet wide constituting 300 feet on each side of the centerline.

This claim runs from the location monument on the centerline on which this location notice is posted approximately 40 feet in a(n) WESTERLY direction to the WEST end line and 1460 feet in a(n) EASTERLY direction to the EAST end line. This claim is marked by six monuments, one at each corner and one at the center of each end line of the claim.

The location monument on which this notice is posted is situated within Unsurveyed Section 12, Township 23 SOUTH, Range 16 EAST, from the Gila and Salt River Meridian, and this claim encompasses portions of the following quarter section (s), section (s), Township (s) and Range (s) SE, SW 1/4's OF UNSURVEYED SECTION 12, T. 23S, R. 16E, & NW 1/4 OF SECTION 18, T. 23S, R. 17E, from the Gila and Salt River Meridian, Arizona.

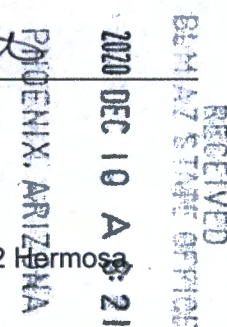
The locality of this claim with reference to some natural object or permanent monument and additional information (if any) concerning its locality are as follows: THE NORTHEAST CORNER OF THE CLAIM IS LOCATED S00°38'E, 6,014.2 FEET FROM THE SOUTHWEST CORNER OF SECTION 6, T. 23S, R. 17E, FROM THE GILA AND SALT RIVER MERIDIAN, SANTA CRUZ COUNTY, AZ.

DATED AND POSTED on the ground this 7 day of NOV, 2020.

WITNESS: [Signature]

Arizona Minerals Inc.  
BY: [Signature]

Ronald E. Stoll  
of JLF2 Consulting, LLC  
1213 N. Torino Avenue  
Tucson, AZ 85712  
AS AGENT FOR South32 Hermos



AMC462205

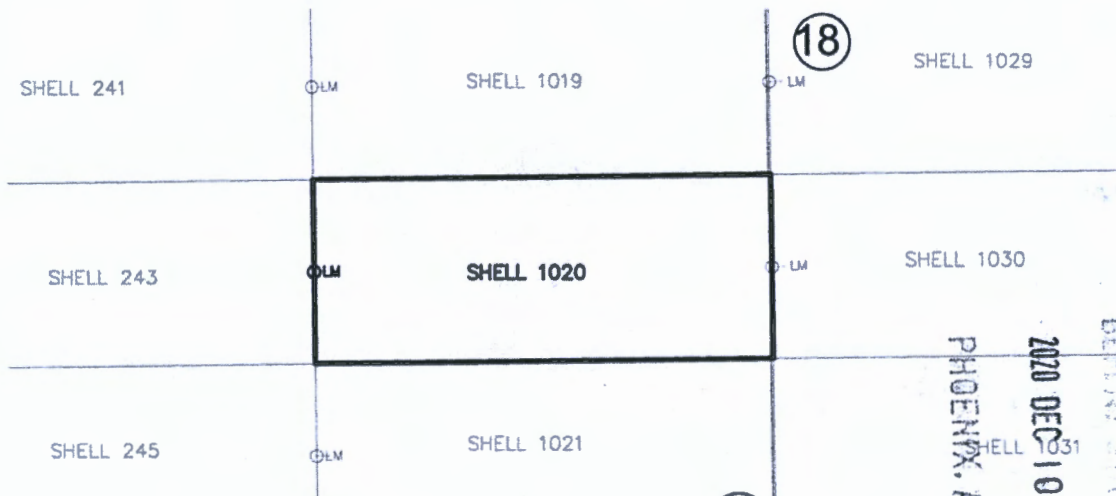
When Filed Return To:

SOUTH32 HERMOSA  
2210 East Fort Lowell Road  
TUCSON, AZ 85719

MINING CLAIM MAP

1" = 600'

LODE (X) PLACER ( )



RECEIVED  
 D.L.M. STATE OFFICE  
 2020 DEC 10 A 8:21  
 PHOENIX, ARIZONA

1. The above map depicts the SHELL-1020 mining claim, which is located in Unsurveyed Section (s) 12 Township 23S, Range 16E, and Section (s) 18 Township 23S, Range 17E, Gila and Salt River Meridian, SANTA CRUZ County, Arizona.
2. The types of corner and end center monuments and location monument used are as follows: 2"X2"X5' WOOD POSTS WITH MARKED ALUMINUM TAGS, IN ROCK CAIRNS. All location monuments (LM) are offset 40 feet from the noted end center monument along the center line of the claim unless otherwise noted. The location monument has been placed outside patented ground.
3. The bearings in degrees between claim corners are: East/West lines run N 89°23' E and North/South lines run N 00°37' W , as depicted on the map or as stated on page 1 of this notice, and are surface distances. All ties to Claim monuments are in grid bearing and distance to reference monument.
4. All claims in this block are contiguous.

RECEIVED  
 D.L.M. STATE OFFICE  
 2020 NOV 23, A 9:16  
 accepted this date.  
 PHOENIX, ARIZONA



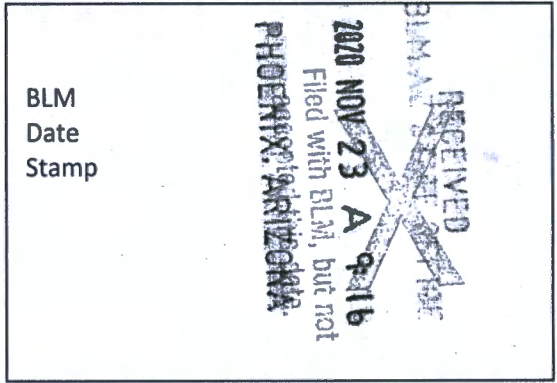
When Filed Return To:

SOUTH32 HERMOSA  
2210 East Fort Lowell Road  
TUCSON, AZ 85719

**LOCATION NOTICE FOR LODE MINING CLAIM**

NOTICE IS HEREBY GIVEN that the SHELL-1021 lode mining claim has been located

By: ARIZONA MINERALS, INC.  
2210 East Fort Lowell Road  
TUCSON, AZ 85719



The general course of this claim is EAST TO WEST and it is situated in the Harshaw and Patagonia Mining Districts, SANTA CRUZ County, Arizona. This claim is 1500 feet long and 600 feet wide constituting 300 feet on each side of the centerline.

This claim runs from the location monument on the centerline on which this location notice is posted approximately 40 feet in a(n) WESTERLY direction to the WEST end line and 1460 feet in a(n) EASTERLY direction to the EAST end line.

This claim is marked by six monuments, one at each corner and one at the center of each end line of the claim.

The location monument on which this notice is posted is situated within Unsurveyed Section 12, Township 23 SOUTH, Range 16 EAST, from the Gila and Salt River Meridian, and this claim encompasses portions of the following quarter section (s), section (s), Township (s) and Range (s) SE, SW 1/4's OF UNSURVEYED SECTION 12, T. 23S, R. 16E, & NW 1/4 OF SECTION 18, T. 23S, R. 17E, from the Gila and Salt River Meridian, Arizona.

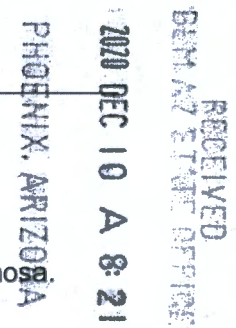
The locality of this claim with reference to some natural object or permanent monument and additional information (if any) concerning its locality are as follows: THE NORTHEAST CORNER OF THE CLAIM IS LOCATED S00°37'E, 6,614.2 FEET FROM THE SOUTHWEST CORNER OF SECTION 6, T. 23S, R. 17E, FROM THE GILA AND SALT RIVER MERIDIAN, SANTA CRUZ COUNTY, AZ.

DATED AND POSTED on the ground this 7 day of NOV, 2020.

WITNESS: [Signature]

Arizona Minerals Inc.  
BY: [Signature]

Ronald E. Stoll  
of JLF2 Consulting, LLC  
1213 N. Torino Avenue  
Tucson, AZ 85712  
AS AGENT FOR South32 Hermosa



ARHC4622206

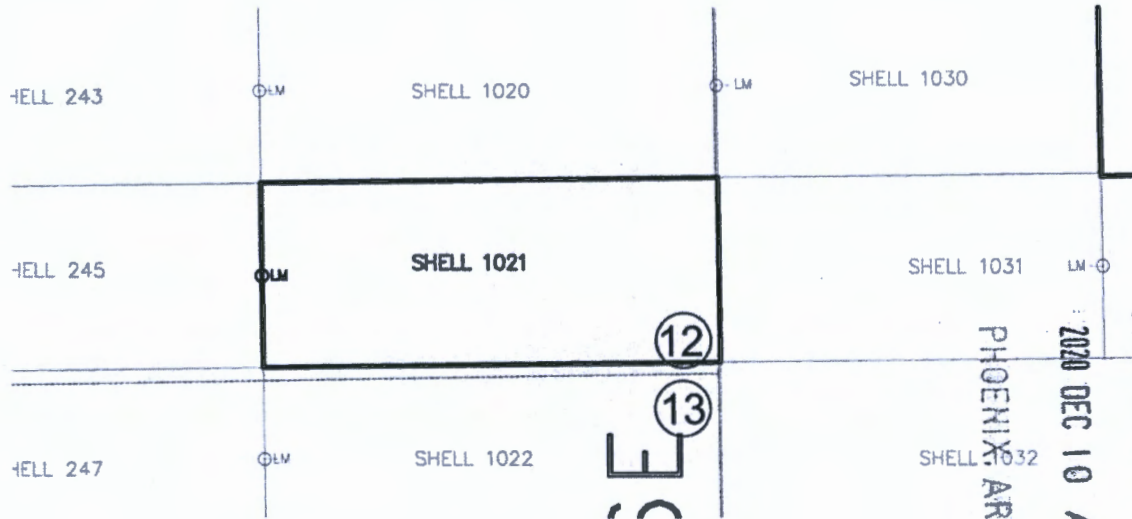
When Filed Return To:

SOUTH32 HERMOSA  
 2210 East Fort Lowell Road  
 TUCSON, AZ 85719

MINING CLAIM MAP

1" = 600'

LODE (X) PLACER ( )



AMC 462206

RECEIVED  
 BLM AZ STATE OFFICE  
 2020 DEC 10 A 8:21  
 PHOENIX ARIZONA

1. The above map depicts the SHELL-1021 mining claim, which is located in Unsurveyed Section (s) 12 Township 23S, Range 16E, and Section (s) 18 Township 23S, Range 17E, Gila and Salt River Meridian, SANTA CRUZ County, Arizona.
2. The types of corner and end center monuments and location monument used are as follows: 2"X2"X5' WOOD POSTS WITH MARKED ALUMINUM TAGS, IN ROCK CAIRNS. All location monuments (LM) are offset 40 feet from the noted end center monument along the center line of the claim unless otherwise noted. The location monument has been placed outside patented ground.
3. The bearings in degrees between claim corners are: East/West lines run N 89°23' E and North/South lines run N 00°37' W , as depicted on the map or as stated on page 1 of this notice, and are surface distances. All ties to Claim monuments are in grid bearing and distance to reference monument.
4. All claims in this block are contiguous.

RECEIVED  
 BLM AZ STATE OFFICE  
 2020 NOV 23 A 9:16  
 Filed with BLM but not  
 accepted  
 PHOENIX ARIZONA





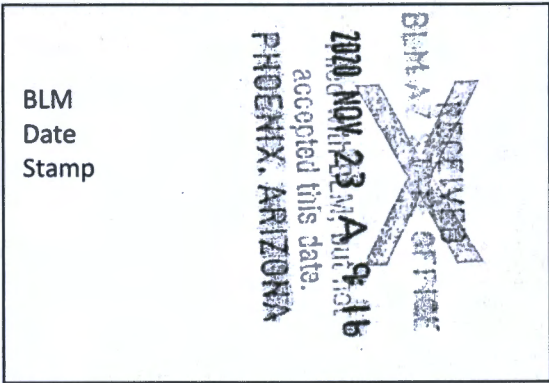
When Filed Return To:

SOUTH32 HERMOSA  
2210 East Fort Lowell Road  
TUCSON, AZ 85719

**LOCATION NOTICE FOR LODE MINING CLAIM**

NOTICE IS HEREBY GIVEN that the SHELL-1022 lode mining claim has been located

By: ARIZONA MINERALS, INC.  
2210 East Fort Lowell Road  
TUCSON, AZ 85719



The general course of this claim is EAST TO WEST and it is situated in the Harshaw and Patagonia Mining Districts, SANTA CRUZ County, Arizona. This claim is 1500 feet long and 600 feet wide constituting 300 feet on each side of the centerline.

This claim runs from the location monument on the centerline on which this location notice is posted approximately 40 feet in a(n) WESTERLY direction to the WEST end line and 1460 feet in a(n) EASTERLY direction to the EAST end line. This claim is marked by six monuments, one at each corner and one at the center of each end line of the claim.

The location monument on which this notice is posted is situated within Unsurveyed Section 13, Township 23 SOUTH, Range 16 EAST, from the Gila and Salt River Meridian, and this claim encompasses portions of the following quarter section (s), section (s), Township (s) and Range (s) SE, SW 1/4's OF UNSURVEYED SECTION 12, NW, NE 1/4's UNSURVEYED SECTION 13, T. 23S, R. 16E, & NW 1/4 OF SECTION 18, T. 23S, R. 17E, from the Gila and Salt River Meridian, Arizona.

The locality of this claim with reference to some natural object or permanent monument and additional information (if any) concerning its locality are as follows: THE NORTHEAST CORNER OF THE CLAIM IS LOCATED S00°37'E, 7,214.2 FEET FROM THE SOUTHWEST CORNER OF SECTION 6, T. 23S, R. 17E, FROM THE GILA AND SALT RIVER MERIDIAN, SANTA CRUZ COUNTY, AZ.

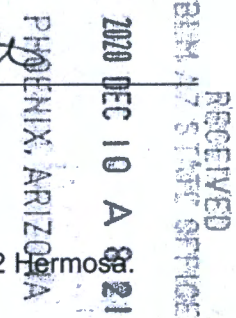
DATED AND POSTED on the ground this 7 day of Nov, 2020.

WITNESS: [Signature]

Arizona Minerals Inc.

BY: [Signature]

Ronald E. Stoll  
of JLF2 Consulting, LLC  
1213 N. Torino Avenue  
Tucson, AZ 85712  
AS AGENT FOR South32 Hermosa



AMC462207

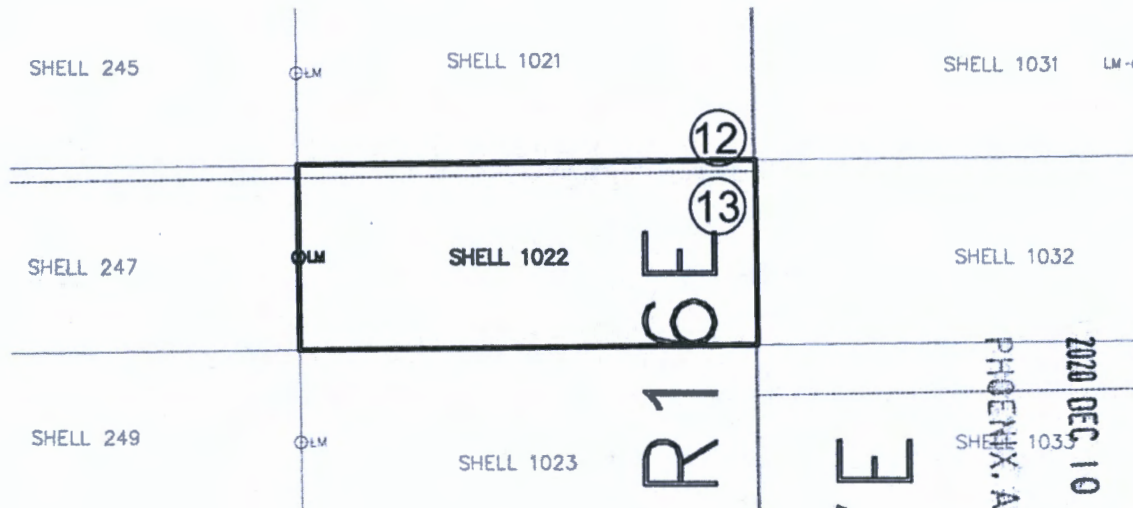
When Filed Return To:

SOUTH32 HERMOSA  
 2210 East Fort Lowell Road  
 TUCSON, AZ 85719

**MINING CLAIM MAP**

1" = 600'

LODE (X) PLACER ( )



AMC462207

RECEIVED  
 BLM AZ STATE OFFICE  
 2020 DEC 10 A 8:21  
 PHOENIX, ARIZONA

1. The above map depicts the SHELL-1022 mining claim, which is located in Unsurveyed Section (s) 12,13 Township 23S, Range 16E, and Section (s) 18 Township 23S, Range 17E, Gila and Salt River Meridian, SANTA CRUZ County, Arizona.
2. The types of corner and end center monuments and location monument used are as follows: 2"X2"X5' WOOD POSTS WITH MARKED ALUMINUM TAGS, IN ROCK CAIRNS. All location monuments (LM) are offset 40 feet from the noted end center monument along the center line of the claim unless otherwise noted. The location monument has been placed outside patented ground.
3. The bearings in degrees between claim corners are: East/West lines run N 89°23' E and North/South lines run N 00°37' W , as depicted on the map or as stated on page 1 of this notice, and are surface distances. All ties to Claim monuments are in grid bearing and distance to reference monument.
4. All claims in this block are contiguous.

RECEIVED  
 BLM AZ STATE OFFICE  
 2020 NOV 23 A 9:16  
 Filed with BLM, but not  
 processed this date  
 PHOENIX, ARIZONA

When Filed Return To:

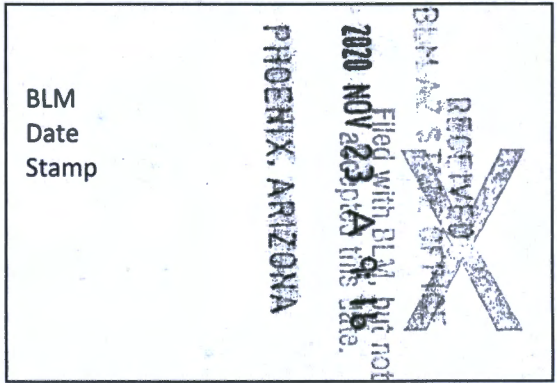


SOUTH32 HERMOSA  
2210 East Fort Lowell Road  
TUCSON, AZ 85719

**LOCATION NOTICE FOR LODE MINING CLAIM**

NOTICE IS HEREBY GIVEN that the SHELL-1023 lode mining claim has been located

By: ARIZONA MINERALS, INC.  
2210 East Fort Lowell Road  
TUCSON, AZ 85719



The general course of this claim is EAST TO WEST and it is situated in the Harshaw and Patagonia Mining Districts, SANTA CRUZ County, Arizona. This claim is 1500 feet long and 600 feet wide constituting 300 feet on each side of the centerline.

This claim runs from the location monument on the centerline on which this location notice is posted approximately 40 feet in a(n) WESTERLY direction to the WEST end line and 1460 feet in a(n) EASTERLY direction to the EAST end line. This claim is marked by six monuments, one at each corner and one at the center of each end line of the claim.

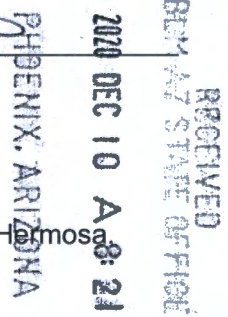
The location monument on which this notice is posted is situated within Unsurveyed Section 13, Township 23 SOUTH, Range 16 EAST, from the Gila and Salt River Meridian, and this claim encompasses portions of the following quarter section (s), section (s), Township (s) and Range (s) NW, NE 1/4's UNSURVEYED SECTION 13, T. 23S, R. 16E, & NW, SW 1/4's OF SECTION 18, T. 23S, R. 17E, from the Gila and Salt River Meridian, Arizona.

The locality of this claim with reference to some natural object or permanent monument and additional information (if any) concerning its locality are as follows: THE NORTHEAST CORNER OF THE CLAIM IS LOCATED S00°37'E, 7,814.2 FEET FROM THE SOUTHWEST CORNER OF SECTION 6, T. 23S, R. 17E, FROM THE GILA AND SALT RIVER MERIDIAN, SANTA CRUZ COUNTY, AZ.

DATED AND POSTED on the ground this 7 day of Nov, 20 20.

WITNESS: [Signature]

Arizona Minerals Inc.  
BY: [Signature]  
Ronald E. Stoll  
of JLF2 Consulting, LLC  
1213 N. Torino Avenue  
Tucson, AZ 85712  
AS AGENT FOR South32 Hermosa



AMC 462708

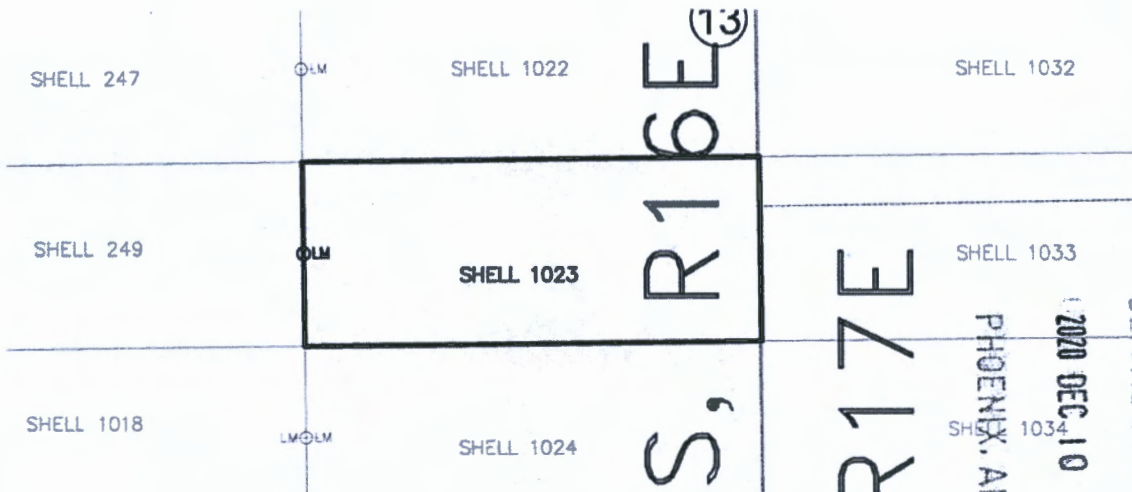
When Filed Return To:

SOUTH32 HERMOSA  
2210 East Fort Lowell Road  
TUCSON, AZ 85719

MINING CLAIM MAP

1" = 600'

LODE (X) PLACER ( )



AMC462208

RECEIVED  
BIA AZ STATE OFFICE  
2020 DEC 10 A 8:21  
PHOENIX, ARIZONA

1. The above map depicts the SHELL-1023 mining claim, which is located in Unsurveyed Section (s) 13 Township 23S, Range 16E, and Section (s) 18 Township 23S, Range 17E, Gila and Salt River Meridian, SANTA CRUZ County, Arizona.
2. The types of corner and end center monuments and location monument used are as follows: 2"X2"X5' WOOD POSTS WITH MARKED ALUMINUM TAGS, IN ROCK CAIRNS. All location monuments (LM) are offset 40 feet from the noted end center monument along the center line of the claim unless otherwise noted. The location monument has been placed outside patented ground.
3. The bearings in degrees between claim corners are: East/West lines run N 89°23' E and North/South lines run N 00°37' W, as depicted on the map or as stated on page 1 of this notice, and are surface distances. All ties to Claim monuments are in grid bearing and distance to reference monument.
4. All claims in this block are contiguous.

RECEIVED  
BIA AZ STATE OFFICE  
2020 NOV 23 A 9:16  
PHOENIX, ARIZONA  
accepted this date.



When Filed Return To:

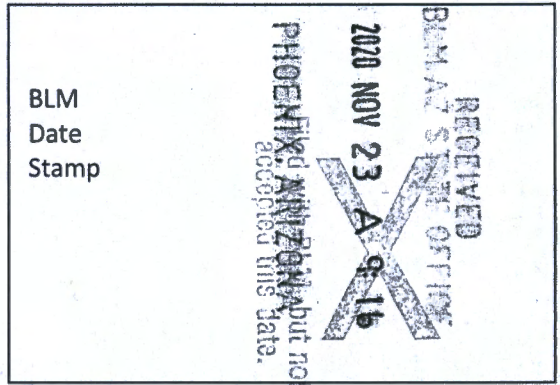
SOUTH32 HERMOSA  
2210 East Fort Lowell Road  
TUCSON, AZ 85719

**LOCATION NOTICE FOR LODE MINING CLAIM**

NOTICE IS HEREBY GIVEN that the SHELL-1024 lode mining claim has been located

By: ARIZONA MINERALS, INC.  
2210 East Fort Lowell Road  
TUCSON, AZ 85719

BLM  
Date  
Stamp



The general course of this claim is EAST TO WEST and it is situated in the Harshaw and Patagonia Mining Districts, SANTA CRUZ County, Arizona. This claim is 1500 feet long and 600 feet wide constituting 300 feet on each side of the centerline.

This claim runs from the location monument on the centerline on which this location notice is posted approximately 40 feet in a(n) WESTERLY direction to the WEST end line and 1460 feet in a(n) EASTERLY direction to the EAST end line.

This claim is marked by six monuments, one at each corner and one at the center of each end line of the claim.

The location monument on which this notice is posted is situated within Unsurveyed Section 13, Township 23 SOUTH, Range 16 EAST, from the Gila and Salt River Meridian, and this claim encompasses portions of the following quarter section (s), section (s), Township (s) and Range (s) NW, NE 1/4's UNSURVEYED SECTION 13, T. 23S, R. 16E, & SW 1/4 OF SECTION 18, T. 23S, R. 17E, from the Gila and Salt River Meridian, Arizona.

The locality of this claim with reference to some natural object or permanent monument and additional information (if any) concerning its locality are as follows: THE NORTHEAST CORNER OF THE CLAIM IS LOCATED S00°37'E, 8,414.2 FEET FROM THE SOUTHWEST CORNER OF SECTION 6, T. 23S, R. 17E, FROM THE GILA AND SALT RIVER MERIDIAN, SANTA CRUZ COUNTY, AZ.

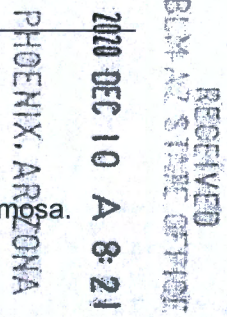
DATED AND POSTED on the ground this 7 day of Nov, 2020.

Arizona Minerals Inc.

WITNESS: Neil Kelly

BY: RM & Stoll

Ronald E. Stoll  
of JLF2 Consulting, LLC  
1213 N. Torino Avenue  
Tucson, AZ 85712  
AS AGENT FOR South32 Hermosa.



AMC 4-2209

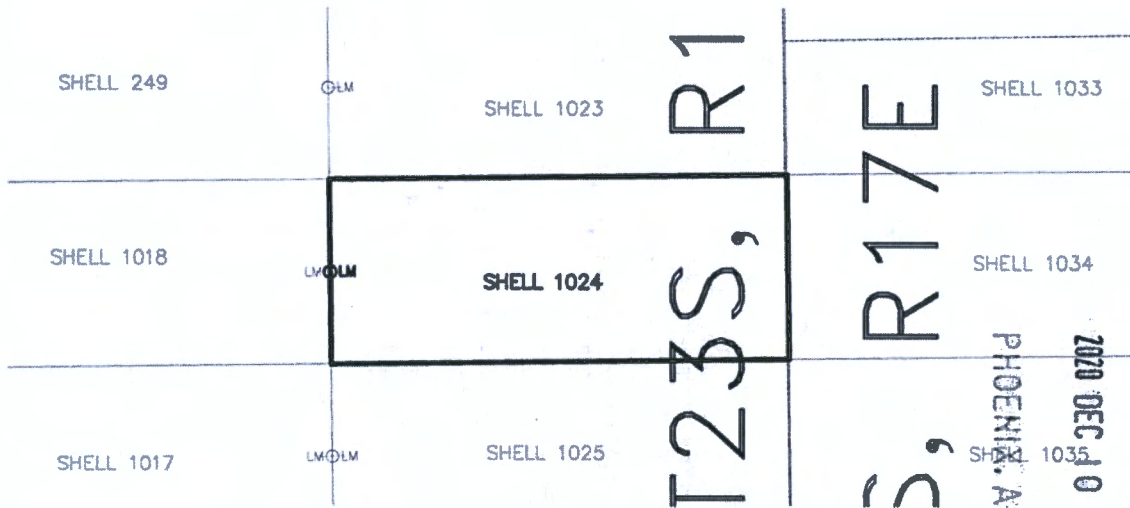
When Filed Return To:

SOUTH32 HERMOSA  
2210 East Fort Lowell Road  
TUCSON, AZ 85719

MINING CLAIM MAP

1" = 600'

LODE (X) PLACER ( )



AMC462209

RECEIVED  
BLM STATE OFFICE  
2020 DEC 10 A 8:21  
PHOENIX, ARIZONA

1. The above map depicts the SHELL-1024 mining claim, which is located in Unsurveyed Section (s) 13 Township 23S, Range 16E, and Section (s) 18 Township 23S, Range 17E, Gila and Salt River Meridian, SANTA CRUZ County, Arizona.
2. The types of corner and end center monuments and location monument used are as follows: 2"X2"X5' WOOD POSTS WITH MARKED ALUMINUM TAGS, IN ROCK CAIRNS. All location monuments (LM) are offset 40 feet from the noted end center monument along the center line of the claim unless otherwise noted. The location monument has been placed outside patented ground.
3. The bearings in degrees between claim corners are: East/West lines run N 89°23' E and North/South lines run N 00°37' W , as depicted on the map or as stated on page 1 of this notice, and are surface distances. All ties to Claim monuments are in grid bearing and distance to reference monument.
4. All claims in this block are contiguous.

RECEIVED  
BLM STATE OFFICE  
2020 NOV 23 A 9:16  
PHOENIX, ARIZONA  
Accepted this date.

When Filed Return To:

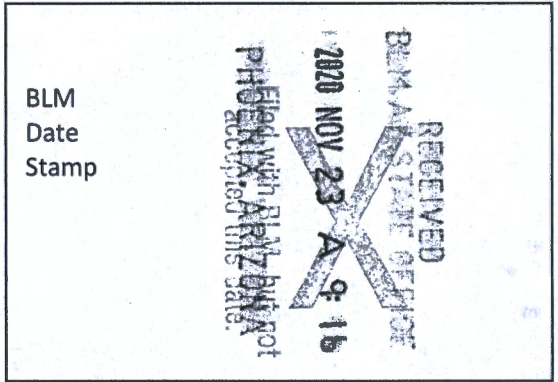


SOUTH32 HERMOSA  
2210 East Fort Lowell Road  
TUCSON, AZ 85719

**LOCATION NOTICE FOR LODE MINING CLAIM**

NOTICE IS HEREBY GIVEN that the SHELL-1025 lode mining claim has been located

By: ARIZONA MINERALS, INC.  
2210 East Fort Lowell Road  
TUCSON, AZ 85719



The general course of this claim is EAST TO WEST and it is situated in the Harshaw and Patagonia Mining Districts, SANTA CRUZ County, Arizona. This claim is 1500 feet long and 600 feet wide constituting 300 feet on each side of the centerline.

This claim runs from the location monument on the centerline on which this location notice is posted approximately 40 feet in a(n) WESTERLY direction to the WEST end line and 1460 feet in a(n) EASTERLY direction to the EAST end line.

This claim is marked by six monuments, one at each corner and one at the center of each end line of the claim.

The location monument on which this notice is posted is situated within Unsurveyed Section 13, Township 23 SOUTH, Range 16 EAST, from the Gila and Salt River Meridian, and this claim encompasses portions of the following quarter section (s), section (s), Township (s) and Range (s) NW, NE 1/4's UNSURVEYED SECTION 13, T. 23S, R. 16E, & SW 1/4 OF SECTION 18, T. 23S, R. 17E, from the Gila and Salt River Meridian, Arizona.

The locality of this claim with reference to some natural object or permanent monument and additional information (if any) concerning its locality are as follows: THE NORTHEAST CORNER OF THE CLAIM IS LOCATED S00°37'E, 9,014.2 FEET FROM THE SOUTHWEST CORNER OF SECTION 6, T. 23S, R. 17E, FROM THE GILA AND SALT RIVER MERIDIAN, SANTA CRUZ COUNTY, AZ.

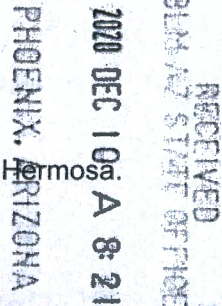
DATED AND POSTED on the ground this 7 day of Nov, 20 20.

Arizona Minerals Inc.

WITNESS: [Signature]

BY: [Signature]

Ronald E. Stoll  
of JLF2 Consulting, LLC  
1213 N. Torino Avenue  
Tucson, AZ 85712  
AS AGENT FOR South32 Hermosa



AMC462210

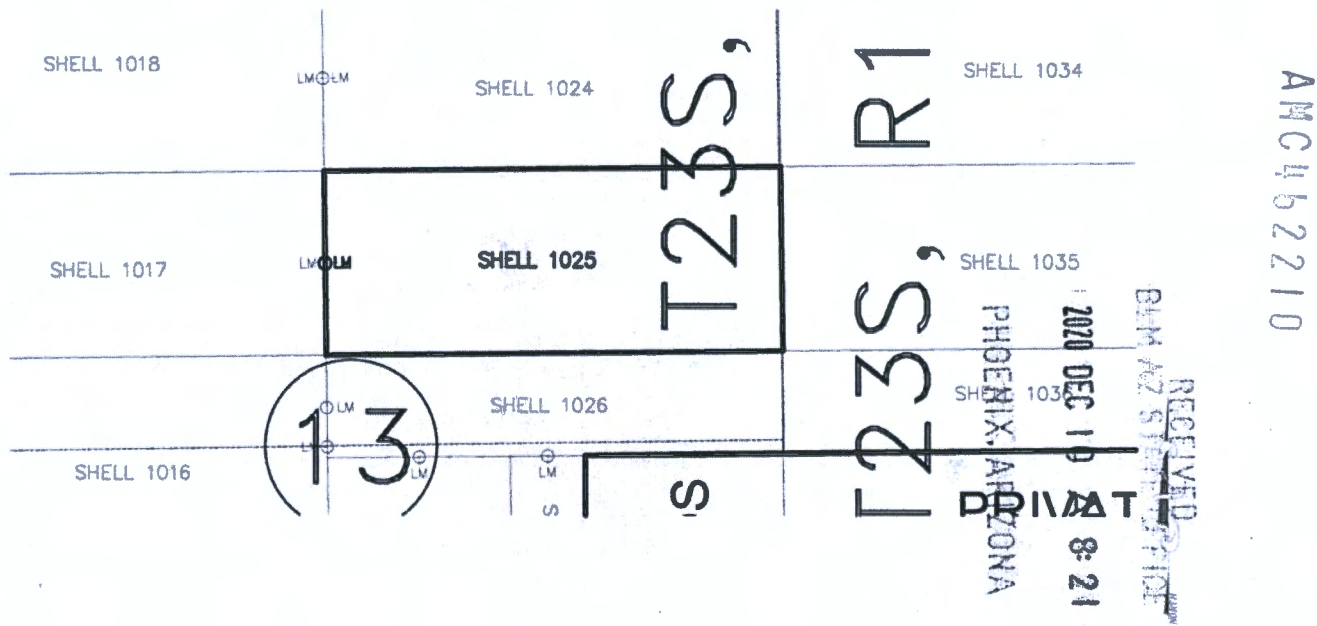
When Filed Return To:

SOUTH32 HERMOSA  
2210 East Fort Lowell Road  
TUCSON, AZ 85719

MINING CLAIM MAP

1" = 600'

LODE (X) PLACER ( )



1. The above map depicts the SHELL-1025 mining claim, which is located in Unsurveyed Section (s) 13 Township 23S, Range 16E, and Section (s) 18 Township 23S, Range 17E, Gila and Salt River Meridian, SANTA CRUZ County, Arizona.
2. The types of corner and end center monuments and location monument used are as follows: 2"X2"X5' WOOD POSTS WITH MARKED ALUMINUM TAGS, IN ROCK CAIRNS. All location monuments (LM) are offset 40 feet from the noted end center monument along the center line of the claim unless otherwise noted. The location monument has been placed outside patented ground.
3. The bearings in degrees between claim corners are: East/West lines run N 89°23' E and North/South lines run N 00°37' W , as depicted on the map or as stated on page 1 of this notice, and are surface distances. All ties to Claim monuments are in grid bearing and distance to reference monument.
4. All claims in this block are contiguous.

RECEIVED  
BLM AZ STATE OFFICE  
2020 NOV 23 A 9 16  
PHOENIX, ARIZONA  
accepted this date.

AMC462210





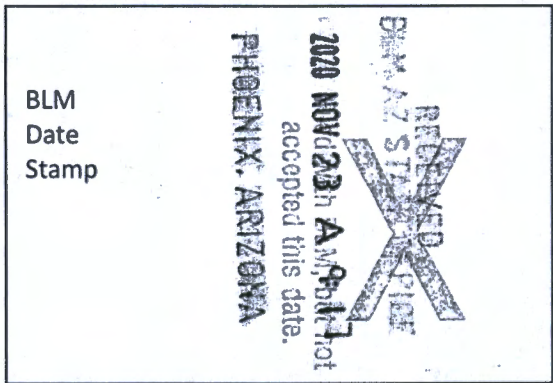
When Filed Return To:

SOUTH32 HERMOSA  
2210 East Fort Lowell Road  
TUCSON, AZ 85719

**LOCATION NOTICE FOR LODE MINING CLAIM**

NOTICE IS HEREBY GIVEN that the SHELL-1026 lode mining claim has been located

By: ARIZONA MINERALS, INC.  
2210 East Fort Lowell Road  
TUCSON, AZ 85719



The general course of this claim is EAST TO WEST and it is situated in the Harshaw and Patagonia Mining Districts, SANTA CRUZ County, Arizona. This claim is 1500 feet long and 336 feet wide constituting 168 feet on each side of the centerline.

This claim runs from the location monument on the centerline on which this location notice is posted approximately 40 feet in a(n) WESTERLY direction to the WEST end line and 1460 feet in a(n) EASTERLY direction to the EAST end line.

This claim is marked by six monuments, one at each corner and one at the center of each end line of the claim.

The location monument on which this notice is posted is situated within Unsurveyed Section 13, Township 23 SOUTH, Range 16 EAST, from the Gila and Salt River Meridian, and this claim encompasses portions of the following quarter section (s), section (s), Township (s) and Range (s) NW,NE,SW,SE 1/4's UNSURVEYED SECTION 13, T. 23S, R. 16E, & SW 1/4 OF SECTION 18, T. 23S, R. 17E, from the Gila and Salt River Meridian, Arizona.

The locality of this claim with reference to some natural object or permanent monument and additional information (if any) concerning its locality are as follows: THE NORTHEAST CORNER OF THE CLAIM IS LOCATED S00°37'E, 9,614.2 FEET FROM THE SOUTHWEST CORNER OF SECTION 6, T. 23S, R. 17E, FROM THE GILA AND SALT RIVER MERIDIAN, SANTA CRUZ COUNTY, AZ.

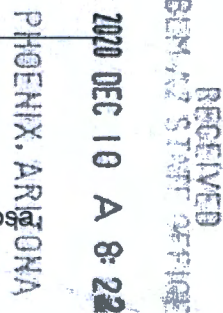
DATED AND POSTED on the ground this 7 day of NOV, 2020.

Arizona Minerals Inc.

WITNESS: [Signature]

BY: [Signature]

Ronald E. Stoll  
of JLF2 Consulting, LLC  
1213 N. Torino Avenue  
Tucson, AZ 85712  
AS AGENT FOR South32 Hermosa



ANC462211

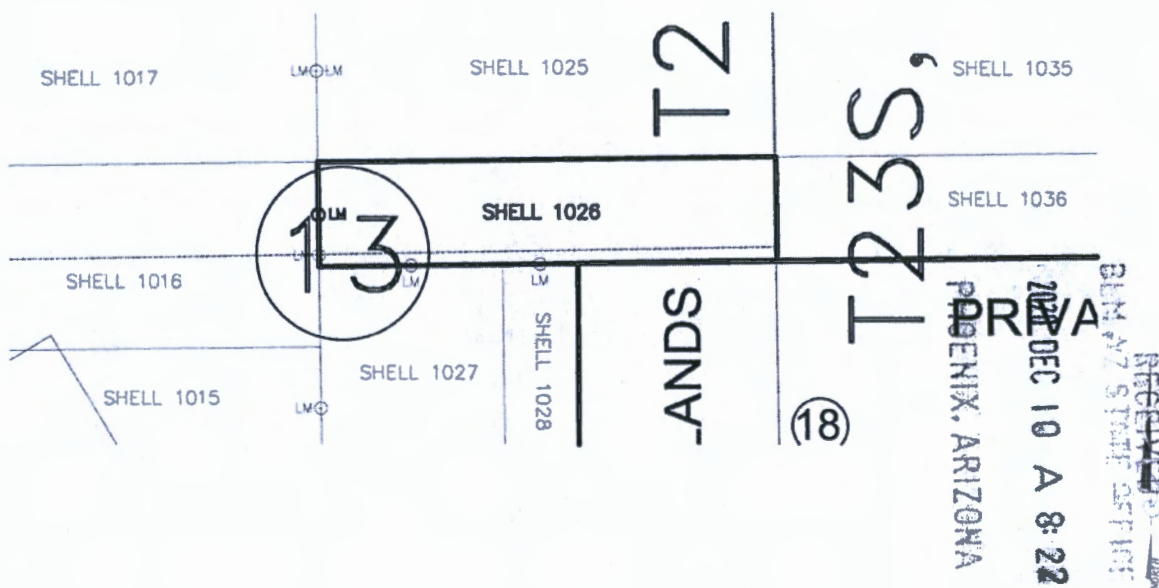
When Filed Return To:

SOUTH32 HERMOSA  
 2210 East Fort Lowell Road  
 TUCSON, AZ 85719

**MINING CLAIM MAP**

1" = 600'

LODE (X) PLACER ( )



AMC 462211

1. The above map depicts the SHELL-1026 mining claim, which is located in Unsurveyed Section (s) 13 Township 23S, Range 16E, and Section (s) 18 Township 23S, Range 17E, Gila and Salt River Meridian, SANTA CRUZ County, Arizona.
2. The types of corner and end center monuments and location monument used are as follows: 2"X2"X5' WOOD POSTS WITH MARKED ALUMINUM TAGS, IN ROCK CAIRNS. All location monuments (LM) are offset 40 feet from the noted end center monument along the center line of the claim unless otherwise noted. The location monument has been placed outside patented ground.
3. The bearings in degrees between claim corners are: East/West lines run N 89°23' E and North/South lines run N 00°37' W , as depicted on the map or as stated on page 1 of this notice, and are surface distances. All ties to Claim monuments are in grid bearing and distance to reference monument.
4. All claims in this block are contiguous.

RECEIVED  
 BLM STAFF OFFICE  
 PHOENIX, ARIZONA  
 2020 NOV 23 A 9:13  
 Filed with BLM, but not accepted this date.

When Filed Return To:

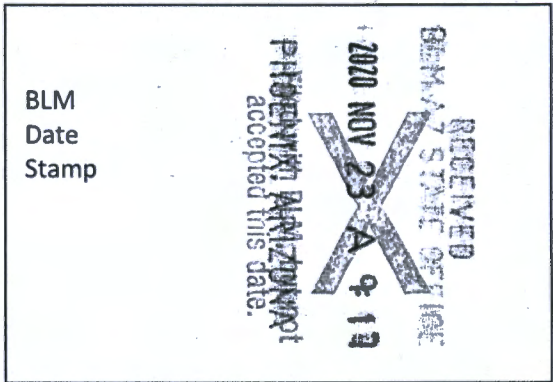
SOUTH32 HERMOSA  
2210 East Fort Lowell Road  
TUCSON, AZ 85719



**LOCATION NOTICE FOR LODE MINING CLAIM**

NOTICE IS HEREBY GIVEN that the SHELL-1027 lode mining claim has been located

By: ARIZONA MINERALS, INC.  
2210 East Fort Lowell Road  
TUCSON, AZ 85719



The general course of this claim is SOUTH TO NORTH and it is situated in the Harshaw and Patagonia Mining Districts, SANTA CRUZ County, Arizona. This claim is 664 feet long and 600 feet wide constituting 300 feet on each side of the centerline.

This claim runs from the location monument on the centerline on which this location notice is posted approximately 40 feet in a(n) NORTHERLY direction to the NORTH end line and 624 feet in a(n) SOUTHERLY direction to the SOUTH end line. This claim is marked by six monuments, one at each corner and one at the center of each end line of the claim.

The location monument on which this notice is posted is situated within Unsurveyed Section 13, Township 23 SOUTH, Range 16 EAST, from the Gila and Salt River Meridian, and this claim encompasses portions of the following quarter section (s), section (s), Township (s) and Range (s) NW,NE,SW,SE 1/4's UNSURVEYED SECTION 13, T. 23S, R. 16E, from the Gila and Salt River Meridian, Arizona.

The locality of this claim with reference to some natural object or permanent monument and additional information (if any) concerning its locality are as follows: THE NORTHEAST CORNER OF THE CLAIM IS LOCATED S04°33'W, 9,990.7 FEET FROM THE SOUTHWEST CORNER OF SECTION 6, T. 23S, R. 17E, FROM THE GILA AND SALT RIVER MERIDIAN, SANTA CRUZ COUNTY, AZ.

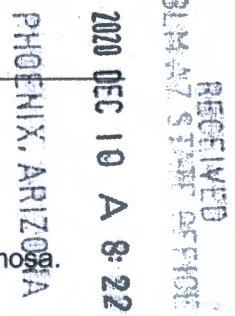
DATED AND POSTED on the ground this 7 day of NOV, 2020

Arizona Minerals Inc.

WITNESS: Mark Kelley

BY: RM & Stoll

Ronald E. Stoll  
of JLF2 Consulting, LLC  
1213 N. Torino Avenue  
Tucson, AZ 85712  
AS AGENT FOR South32 Hermosa



AMC462212

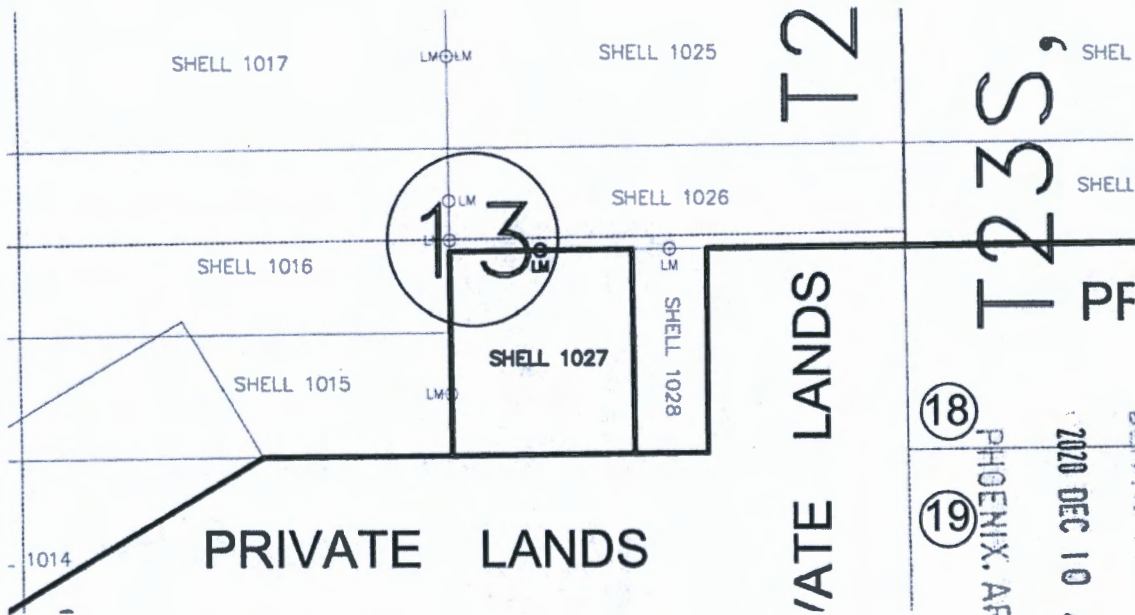
When Filed Return To:

SOUTH32 HERMOSA  
2210 East Fort Lowell Road  
TUCSON, AZ 85719

MINING CLAIM MAP

1" = 600'

LODE (X) PLACER ( )



AMC462212

RECEIVED  
BUREAU OF LAND MANAGEMENT  
2020 DEC 10 A 8:29  
PHOENIX, ARIZONA

1. The above map depicts the SHELL-1027 mining claim, which is located in Unsurveyed Section (9) 13 Township 23S, Range 16E, Gila and Salt River Meridian, SANTA CRUZ County, Arizona.
2. The types of corner and end center monuments and location monument used are as follows: 2"X2"X5' WOOD POSTS WITH MARKED ALUMINUM TAGS, IN ROCK CAIRNS. All location monuments (LM) are offset 40 feet from the noted end center monument along the center line of the claim unless otherwise noted. The location monument has been placed outside patented ground.
3. The bearings in degrees between claim corners are: East/West lines run N 89°23' E and North/South lines run N 00°37' W, as depicted on the map or as stated on page 1 of this notice, and are surface distances. All ties to Claim monuments are in grid bearing and distance to reference monument.
4. All claims in this block are contiguous.

RECEIVED  
BUREAU OF LAND MANAGEMENT  
2020 NOV 23 A 9:17  
Filed with BLM, but not  
Phoenix and ZORA



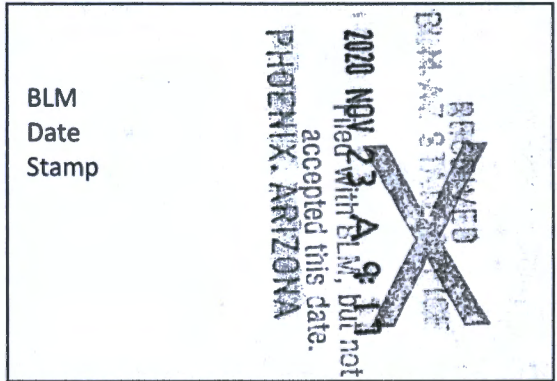
When Filed Return To:

SOUTH32 HERMOSA  
2210 East Fort Lowell Road  
TUCSON, AZ 85719

**LOCATION NOTICE FOR LODE MINING CLAIM**

NOTICE IS HEREBY GIVEN that the SHELL-1028 lode mining claim has been located

By: ARIZONA MINERALS, INC.  
2210 East Fort Lowell Road  
TUCSON, AZ 85719



The general course of this claim is SOUTH TO NORTH and it is situated in the Harshaw and Patagonia Mining Districts, SANTA CRUZ County, Arizona. This claim is 664 feet long and 242 feet wide constituting 121 feet on each side of the centerline.

This claim runs from the location monument on the centerline on which this location notice is posted approximately 40 feet in a(n) NORTHERLY direction to the NORTH end line and 624 feet in a(n) SOUTHERLY direction to the SOUTH end line. This claim is marked by six monuments, one at each corner and one at the center of each end line of the claim.

The location monument on which this notice is posted is situated within Unsurveyed Section 13, Township 23 SOUTH, Range 16 EAST, from the Gila and Salt River Meridian, and this claim encompasses portions of the following quarter section (s), section (s), Township (s) and Range (s) SW,SE 1/4's UNSURVEYED SECTION 13, T. 23S, R. 16E, from the Gila and Salt River Meridian, Arizona.

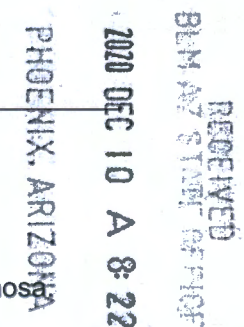
The locality of this claim with reference to some natural object or permanent monument and additional information (if any) concerning its locality are as follows: THE NORTHEAST CORNER OF THE CLAIM IS LOCATED S03°08'W, 9.9715 FEET FROM THE SOUTHWEST CORNER OF SECTION 6, T. 23S, R. 17E, FROM THE GILA AND SALT RIVER MERIDIAN, SANTA CRUZ COUNTY, AZ.

DATED AND POSTED on the ground this 7 day of NOV, 20 20.

WITNESS: Neil Wherry

Arizona Minerals Inc.  
BY: RM & Stoll

Ronald E. Stoll  
of JLF2 Consulting, LLC  
1213 N. Torino Avenue  
Tucson, AZ 85712  
AS AGENT FOR South32 Hermosa



AMC 462215

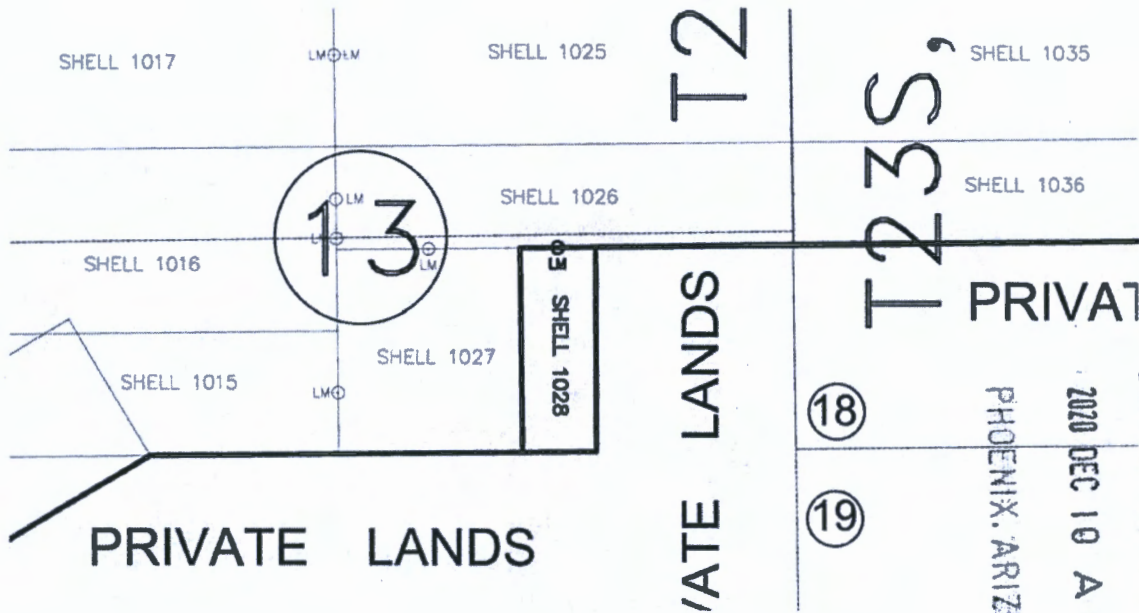
When Filed Return To:

SOUTH32 HERMOSA  
 2210 East Fort Lowell Road  
 TUCSON, AZ 85719

MINING CLAIM MAP

1" = 600'

LODE (X) PLACER ( )



AMC462213

RECEIVED  
 BLM STATE OFFICE  
 2020 DEC 10 A 8:22  
 PHOENIX, ARIZONA

1. The above map depicts the SHELL-1028 mining claim, which is located in Unsurveyed Section (s) 13 Township 23S, Range 16E, Gila and Salt River Meridian, SANTA CRUZ County, Arizona.
2. The types of corner and end center monuments and location monument used are as follows: 2"X2"X5' WOOD POSTS WITH MARKED ALUMINUM TAGS, IN ROCK CAIRNS. All location monuments (LM) are offset 40 feet from the noted end center monument along the center line of the claim unless otherwise noted. The location monument has been placed outside patented ground.
3. The bearings in degrees between claim corners are: East/West lines run N 89°23' E and North/South lines run N 00°37' W, as depicted on the map or as stated on page 1 of this notice, and are surface distances. All ties to Claim monuments are in grid bearing and distance to reference monument.
4. All claims in this block are contiguous.

RECEIVED  
 BLM STATE OFFICE  
 2020 NOV 23 A 9:13  
 Filed with BLM/DOI not  
 processed into date.



# LR2000 Internal

## CR Geographic Report with Land

**Download User Guide (pdf)**

**Purpose:** This report produces a geographic listing of case information based on retrieval by Meridian/Township/Range. This report format will display the case type, case disposition, meridian, township, range, section, survey type, survey number, surface management agency, pending actions, serial number, and total case acres.

To refresh the query, do a **Ctrl-R**. It resets the page and clears any criteria fields that may have entries.



### No Results

The specified criteria didn't result in any data. This is often caused by applying filters and/or selection steps that are too restrictive or that contain incorrect values. Please check your analysis filters and selection steps, and try again. The filters or selection steps currently being applied are shown below.

### Filters

Disposition is equal to **AUTHORIZED, CANCELLED, EXPIRED, PENDING, REJECTED, RELINQUISHED, WITHDRAWN**  
and Meridian Township Range Section is equal to **14 0230S 0160E 012**  
and Admin State is equal to **AZ**

Return - Refresh



# LR2000 Internal

## CR Geographic Report with Land

[Download User Guide \(pdf\)](#)

**Purpose:** This report produces a geographic listing of case information based on retrieval by Meridian/Township/Range. This report format will display the case type, case disposition, meridian, township, range, section, survey type, survey number, surface management agency, pending actions, serial number, and total case acres.

To refresh the query, do a **Ctrl-R**. It resets the page and clears any criteria fields that may have entries.



### No Results

The specified criteria didn't result in any data. This is often caused by applying filters and/or selection steps that are too restrictive or that contain incorrect values. Please check your analysis filters and selection steps, and try again. The filters or selection steps currently being applied are shown below.

### Filters

Disposition is equal to **AUTHORIZED, CANCELLED, EXPIRED, PENDING, REJECTED, RELINQUISHED, WITHDRAWN**  
**and** Meridian Township Range Section is equal to **14 0230S 0160E 013**  
**and** Admin State is equal to **AZ**

[Return - Refresh](#)





# LR2000 Internal

## CR Geographic Report with Land

[Download User Guide \(pdf\)](#)

**Purpose:** This report produces a geographic listing of case information based on retrieval by Meridian/Township/Range. This report format will display the case type, case disposition, meridian, township, range, section, survey type, survey number, surface management agency, pending actions, serial number, and total case acres.

To refresh the query, do a **Ctrl-R**. It resets the page and clears any criteria fields that may have entries.



### No Results

The specified criteria didn't result in any data. This is often caused by applying filters and/or selection steps that are too restrictive or that contain incorrect values. Please check your analysis filters and selection steps, and try again. The filters or selection steps currently being applied are shown below.

### Filters

Disposition is equal to **AUTHORIZED, CANCELLED, EXPIRED, PENDING, REJECTED, RELINQUISHED, WITHDRAWN**  
and Meridian Township Range Section is equal to **14 0230S 0160E 014**  
and Admin State is equal to **AZ**

[Return - Refresh](#)



# LR2000 Internal

## CR Geographic Report with Land

**Download User Guide (pdf)**

**Purpose:** This report produces a geographic listing of case information based on retrieval by Meridian/Township/Range. This report format will display the case type, case disposition, meridian, township, range, section, survey type, survey number, surface management agency, pending actions, serial number, and total case acres.

To refresh the query, do a **Ctrl-R**. It resets the page and clears any criteria fields that may have entries.



### No Results

The specified criteria didn't result in any data. This is often caused by applying filters and/or selection steps that are too restrictive or that contain incorrect values. Please check your analysis filters and selection steps, and try again. The filters or selection steps currently being applied are shown below.

### Filters

Disposition is equal to **AUTHORIZED, CANCELLED, EXPIRED, PENDING, REJECTED, RELINQUISHED, WITHDRAWN**  
**and** Meridian Township Range Section is equal to **14 0230S 0170E 018**  
**and** Admin State is equal to **AZ**

Return - Refresh





# Express Envelope

RECEIVED  
BLM AZ STATE OFFICE  
2020 DEC 10 A 8:22  
PHOENIX, ARIZONA

BUREAU OF LAND MANAGEMENT  
1 N CENTRAL AVE  
STE 800  
PHOENIX AZ 85004

P: BROWN S: ORANGE  
**1004-1056**  
1Z816E29019303 0263  
SAT08486 Dec 9 04:14:38 2020  
1030

